

Existing Structure: S.N. 016-2704 built in 1998 as F.A.I. Route 55, Section 0404-676B. Structure consists of a five span curved steel plate girder bridge with 702'-7<sup>3</sup>/<sub>4</sub>" back-to-back abutments and 69'-5<sup>3</sup>/<sub>8</sub>" out-to-out deck width. Piers 1, 2 and 4 are cap beams supported on drilled shaft columns and pier 3 is a multicolumn pier. The abutments are supported on steel piles.

**GENERAL NOTES**

Plan dimensions and details relative to existing plans are subject to nominal construction variations. The Contractor shall field verify existing dimensions and details affecting new construction and make necessary approved adjustments prior to construction or ordering of materials. Such variations shall not be cause for additional compensation for a change in scope of the work, however, the Contractor will be paid for the quantity actually furnished at the unit price bid for the work.

Existing pavement markings shall be temporarily covered prior to application of the Concrete Sealer, to prevent the material from being applied to the markings. The temporary covering shall be removed after application of the Concrete Sealer and prior to opening to traffic. Cost is included with "Concrete Sealer".

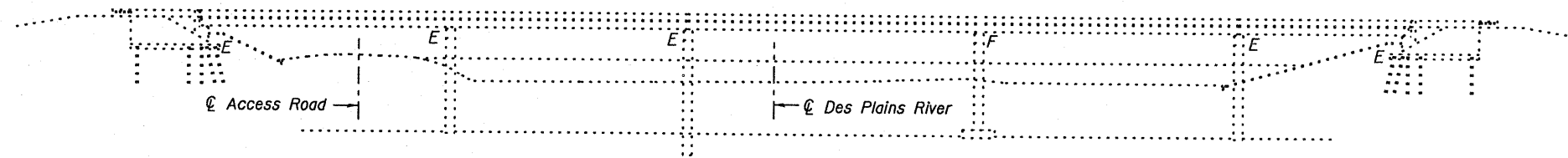
See special provisions for lane closure requirements. Roadway shall only be opened to traffic after sealant has completely cured.

**SCOPE OF WORK**

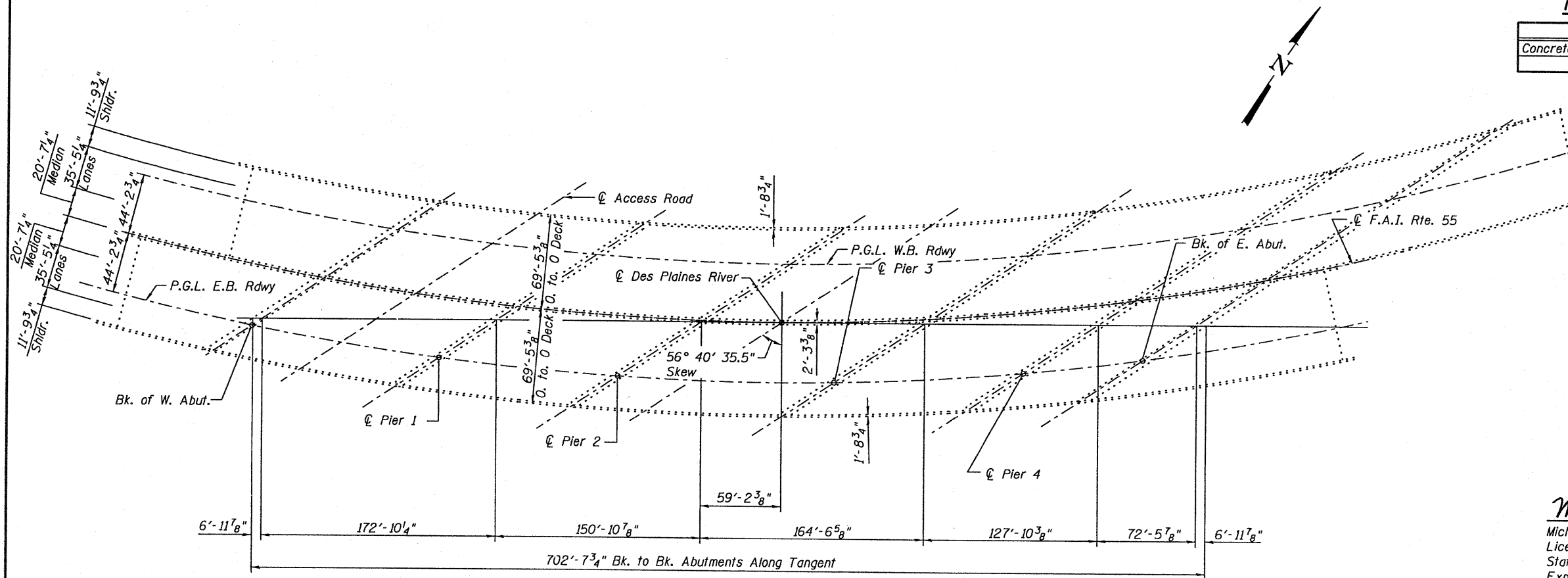
Apply Concrete Sealer to top of deck surface and top and inside vertical face of parapets.

**TOTAL BILL OF MATERIAL**

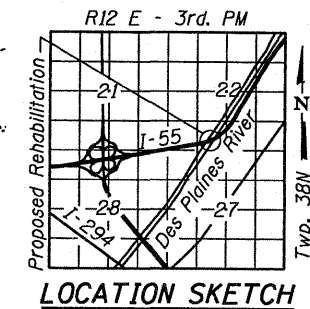
Item	Unit	Total
Concrete Sealer	Sq. Ft.	106383



**ELEVATION**



**PLAN**



**LOCATION SKETCH**



*Michael T. Haley* 12-6-10  
 Michael T. Haley Date  
 Licensed Structural Engineer  
 State of Illinois No. 81-5991  
 Expires 11/30/2012

**GENERAL PLAN AND ELEVATION  
 W.B I-55 OVER DES PLAINES RIVER  
 FAI RTE 55 -  
 SECTION (0102-631,ETC,0507-635K)RS-3  
 COOK COUNTY  
 STRUCTURE NO. 016-2704**

**LE** LIN ENGINEERING, LTD.  
 Consulting Engineers  
 Chatham, Illinois

USER NAME =	DESIGNED - TBP	REVISED -
PLOT SCALE =	CHECKED - KHH	REVISED -
PLOT DATE =	DRAWN - TBP	REVISED -
	CHECKED - KHH	REVISED -

**STATE OF ILLINOIS  
 DEPARTMENT OF TRANSPORTATION**

**GENERAL PLAN & ELEVATION  
 STRUCTURE NO. 016-2704**

SHEET NO. 1 OF 1 SHEET

F.A.I. RTE.	SECTION	COUNTY	TOTAL SHEETS	SHEET NO.
55	(0102-631,ETC,0507-635K)RS-3	COOK	197	71

CONTRACT NO. 60164  
 ILLINOIS FED. AID PROJECT