

F.A.P. RTE.	SECTION	COUNTY	TOTAL SHEETS	SHEET NO.
326	105 N-4	MCHENRY	60	1
		ILLINOIS	CONTRACT NO. 60K18	

STATE OF ILLINOIS
DEPARTMENT OF TRANSPORTATION
DIVISION OF HIGHWAYS

**PROPOSED
HIGHWAY PLANS**

FAP ROUTE 326 : IL 47/IL 176
AT IL 176 (NORTH & SOUTH JCT)

SECTION: 105 N-4

CHANNELIZATION, TRAFFIC SIGNAL MODERNIZATION

PROJECT: *CMF-0326(081)*

MCHENRY COUNTY

C-91-444-10

D-91-444-10

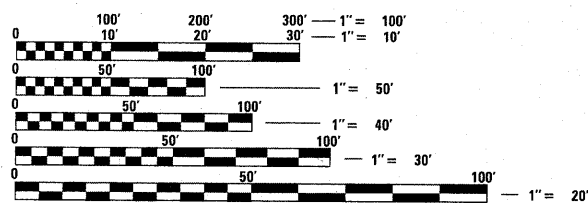


FOR INDEX OF SHEETS, SEE SHEET NO. 2

THIS PROJECT IS LOCATED
IN UNINCORPORATED MCHENRY COUNTY

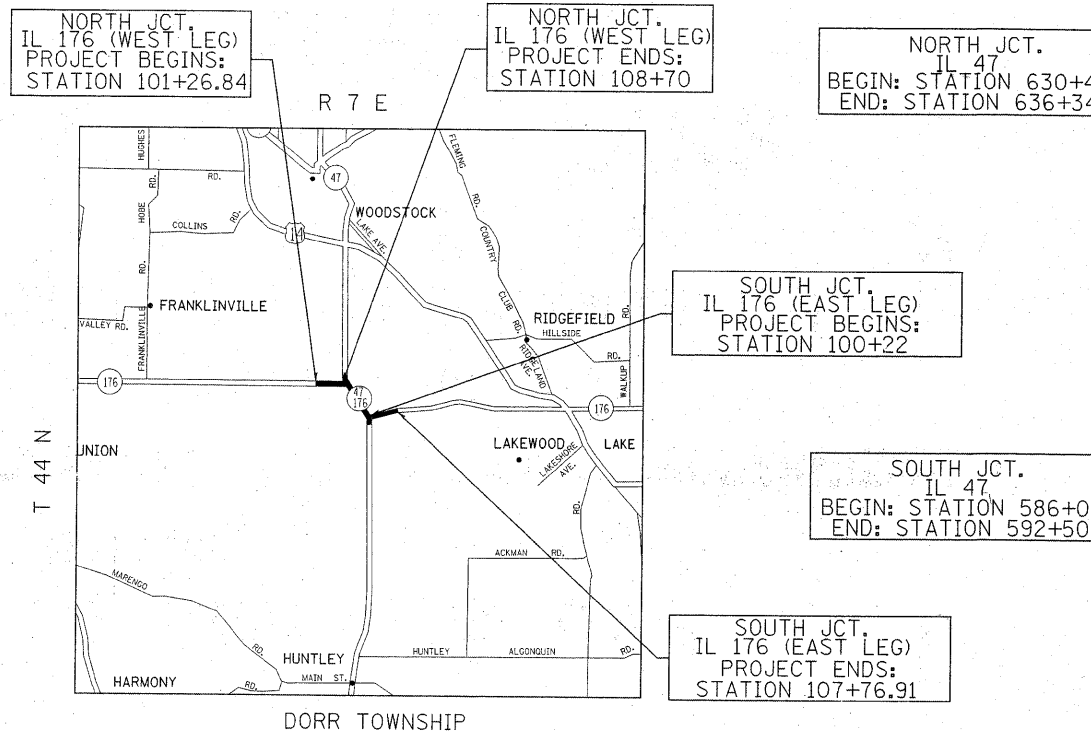
TRAFFIC DATA FOR ILL 176

ADT (2007) = 10,500 VPD
SPEED LIMIT = 55 MPH



FULL SIZE PLANS HAVE BEEN PREPARED USING STANDARD ENGINEERING SCALES. REDUCED SIZED PLANS WILL NOT CONFORM TO STANDARD SCALES. IN MAKING MEASUREMENTS ON REDUCED PLANS, THE ABOVE SCALES MAY BE USED.

J.U.L.I.E.
JOINT UTILITY LOCATION INFORMATION FOR EXCAVATION
1-800-892-0123 OR 811



PROJECT ENGINEER: DAN WILGREEN /(847) 705-4240
PROJECT MANAGER KEN ENG /(847) 705-4247

CONTRACT NO. 60K18

GROSS LENGTH OF PROJECT = NET LENGTH OF PROJECT = 2734 FEET = .52 MILE

STATE OF ILLINOIS
DEPARTMENT OF TRANSPORTATION
DIVISION OF HIGHWAYS

SUBMITTED December 22, 2010

Diane M. O'Keefe *se*
DEPUTY DIRECTOR OF HIGHWAYS, REGION ENGINEER

February 4, 2011
Scott E. Stitt *PE, Ia*
acting ENGINEER OF DESIGN AND ENVIRONMENT

February 4, 2011
Christine M. Reed *Ia*
DIRECTOR OF HIGHWAYS, CHIEF ENGINEER

**PRINTED BY THE AUTHORITY
OF THE STATE OF ILLINOIS**