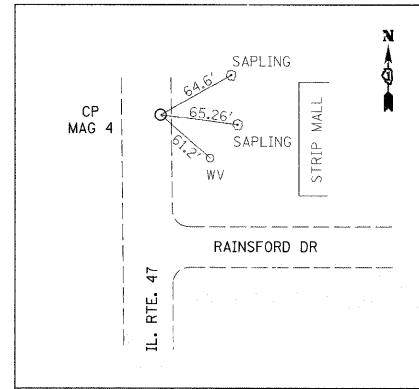
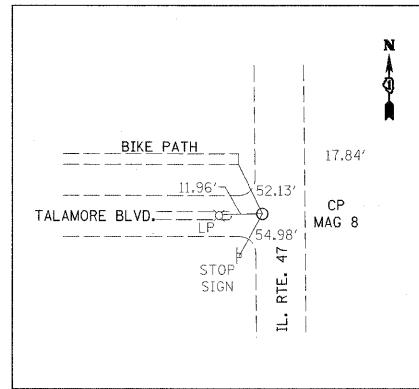


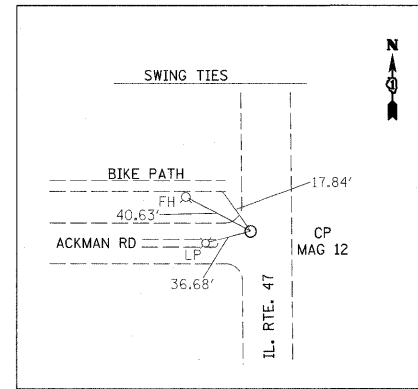
**CONTROL POINT #1**  
 STA. 354+41.56, 42.68' RT.  
 N 2008648.226  
 E 959728.152  
 ELEV. 888.8224



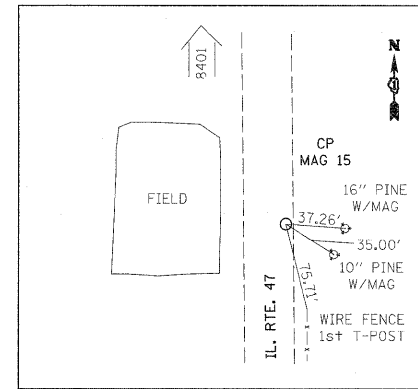
**CONTROL POINT #4**  
 STA. 376+91.28, 41.49' RT.  
 N 2010811.256  
 E 960171.510  
 ELEV. 872.6668



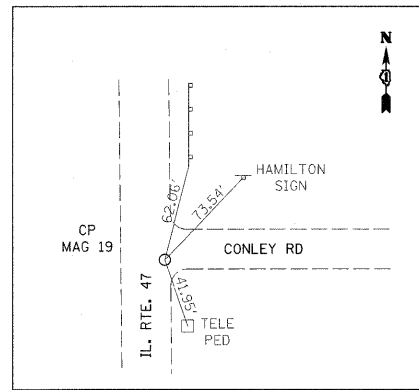
**CONTROL POINT #8**  
 STA. 400+53.97, 47.84' LT.  
 N 2013172.213  
 E 960044.336  
 ELEV. 868.1052



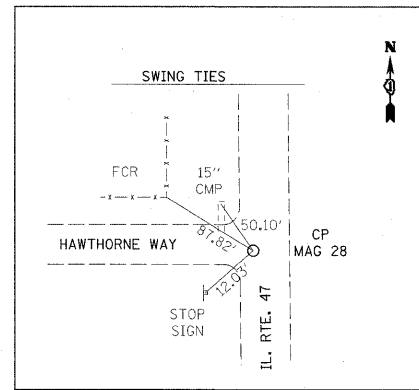
**CONTROL POINT #12**  
 STA. 423+03.07, 42.17' LT.  
 N 2015421.868  
 E 960019.202  
 ELEV. 875.1350



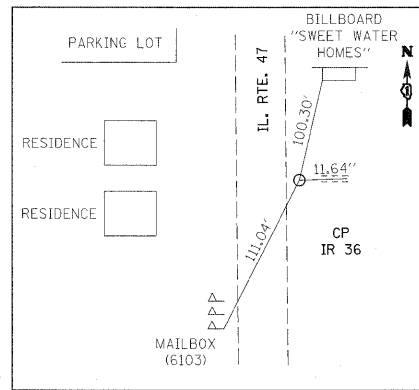
**CONTROL POINT #15**  
 STA. 444+74.00, 19.14' RT.  
 N 2017592.131  
 E 960114.099  
 ELEV. 877.9921



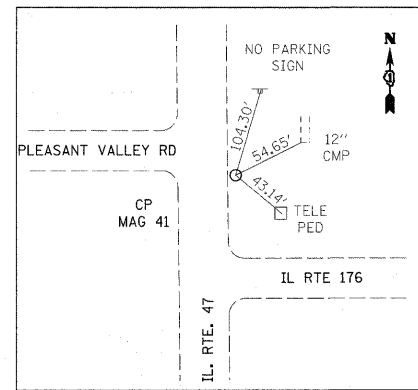
**CONTROL POINT #19**  
 STA. 479+17.36, 30.00' RT.  
 N 2021035.751  
 E 960141.852  
 ELEV. 861.8536



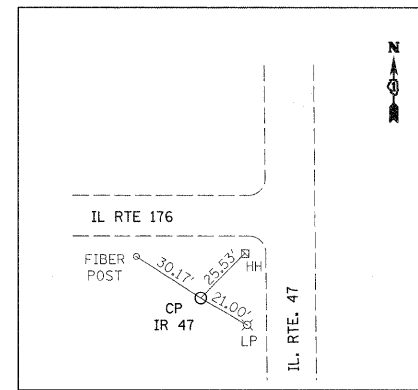
**CONTROL POINT #28**  
 STA. 543+50.45, 26.05' LT.  
 N 2027468.661  
 E 960067.332  
 ELEV. 881.7024



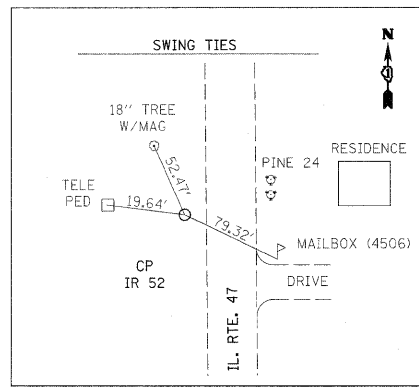
**CONTROL POINT #36**  
 STA. 572+75.57, 21.96' RT.  
 N 2030393.897  
 E 960107.674  
 ELEV. 920.0076



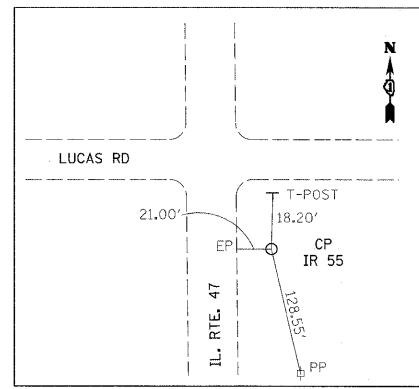
**CONTROL POINT #41**  
 STA. 594+38.33, 28.72' RT.  
 N 2032497.371  
 E 959765.142  
 ELEV. 912.6566



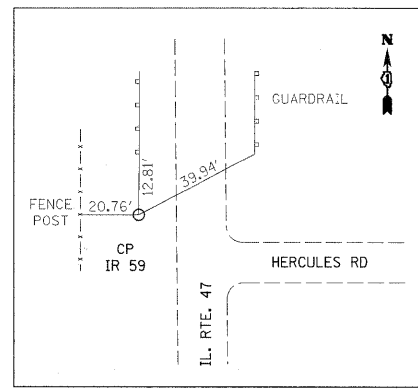
**CONTROL POINT #47**  
 STA. 633+07.53, 85.39' LT.  
 N 2035492.597  
 E 957286.435  
 ELEV. 907.3021



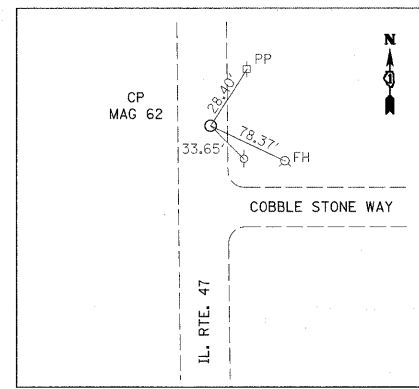
**CONTROL POINT #52**  
 STA. 666+74.74, 21.38' LT.  
 N 2038877.094  
 E 957227.189  
 ELEV. 936.0100



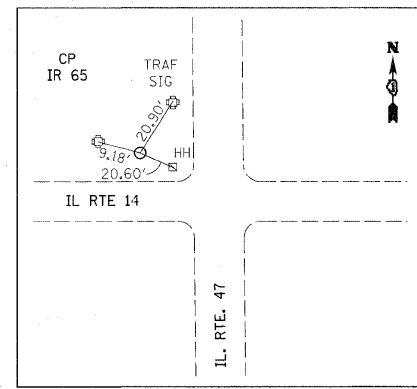
**CONTROL POINT #55**  
 STA. 689+61.70, 35.93' RT.  
 N 2041163.860  
 E 957291.919  
 ELEV. 932.7500



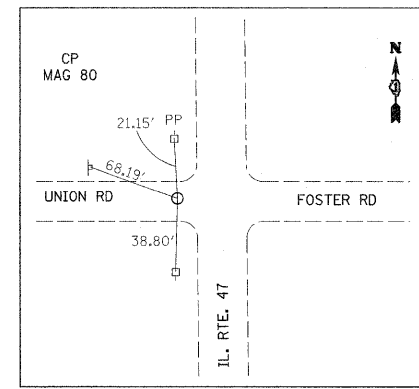
**CONTROL POINT #59**  
 STA. 726+17.12, 16.12' LT.  
 N 2044819.274  
 E 957236.918  
 ELEV. 929.7100



**CONTROL POINT #62**  
 STA. 755+31.05, 25.24' RT.  
 N 2047733.299  
 E 957265.435  
 ELEV. 928.1661



**CONTROL POINT #65**  
 STA. 779+86.67, 66.82' LT.  
 N 2050188.055  
 E 957153.253  
 ELEV. 948.5838



**CONTROL POINT #80**  
 STA. 518+29.43, 39.85' LT.  
 N 2024947.611  
 E 960954.520  
 ELEV. 859.903

FILE NAME =  
 c:\pwork\p1dot\ulrichk\d0206787\DI44

USER NAME = ulrichk  
 10-shit-ATB.dgn  
 PLOT SCALE = 200.0000' / IN.  
 PLOT DATE = 12/20/2010

DESIGNED -  
 DRAWN -  
 CHECKED -  
 DATE -

REVISED -  
 REVISED -  
 REVISED -  
 REVISED -

**STATE OF ILLINOIS  
 DEPARTMENT OF TRANSPORTATION**

**ALIGNMENT, TIES AND BENCHMARKS  
 IL RTE. 47 AT IL RTE. 176 (NORTH & SOUTH JCT.)**

SCALE: 1"=200' SHEET NO. OF SHEETS STA. TO STA.

F.A.P. RTE.	SECTION	COUNTY	TOTAL SHEETS	SHEET NO.
326/IL 47	105 N-4	McHENRY	60	9
CONTRACT NO. 60K18			ILLINOIS FED. AID PROJECT	