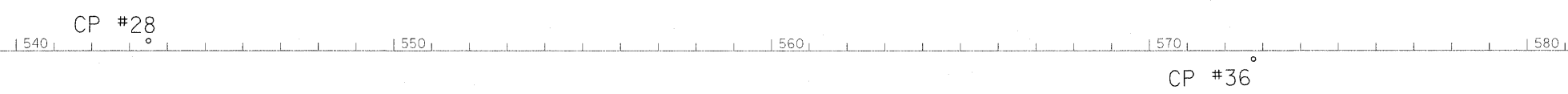


IL. ROUTE 47

MATCHLINE STA. 531+00

MATCHLINE STA. 588+00



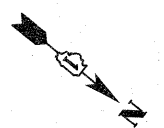
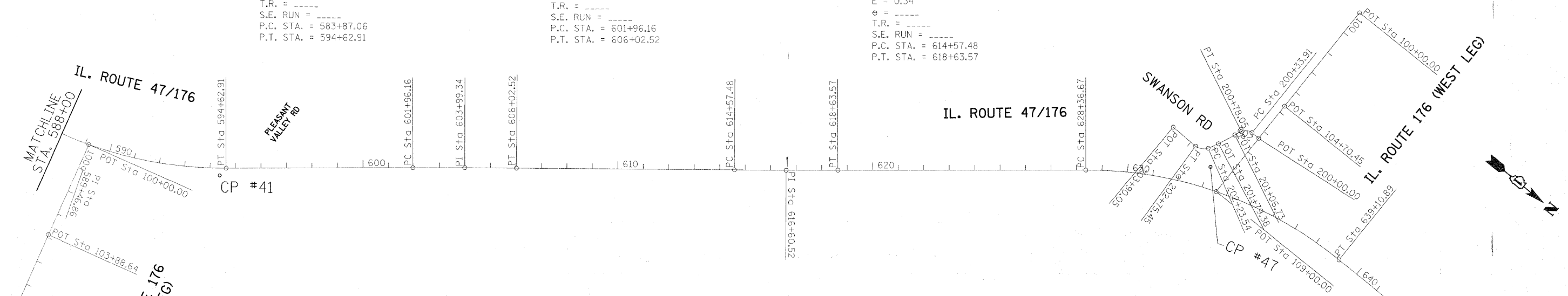
EXIST. CURVE E_47-4
 PI STA. = 589+46.86
 $\Delta = 39^\circ 05' 16''$ (LT)
 $D = 3^\circ 38' 00''$
 $R = 1,577.00'$
 $T = 559.81'$
 $L = 1,075.85'$
 $E = 96.41'$
 $e =$ -----
 $T.R. =$ -----
 $S.E. RUN =$ -----
 $P.C. STA. = 583+87.06$
 $P.T. STA. = 594+62.91$

EXIST. CURVE E_47-5
 PI STA. = 603+99.34
 $\Delta = 0^\circ 31' 03''$ (RT)
 $D = 0^\circ 07' 38''$
 $R = 45,000.00'$
 $T = 203.19'$
 $L = 406.37'$
 $E = 0.46'$
 $e =$ -----
 $T.R. =$ -----
 $S.E. RUN =$ -----
 $P.C. STA. = 601+96.16$
 $P.T. STA. = 606+02.52$

EXIST. CURVE E_47-6
 PI STA. = 616+60.52
 $\Delta = 0^\circ 23' 16''$ (LT)
 $D = 0^\circ 05' 44''$
 $R = 60,000.00'$
 $T = 203.05'$
 $L = 406.10'$
 $E = 0.34'$
 $e =$ -----
 $T.R. =$ -----
 $S.E. RUN =$ -----
 $P.C. STA. = 614+57.48$
 $P.T. STA. = 618+63.57$

EXIST. CURVE E_SWNSN-1
 PI STA. = 200+58.71
 $\Delta = 65^\circ 04' 18''$ (LT)
 $D = 147^\circ 24' 35''$
 $R = 38.87'$
 $T = 24.80'$
 $L = 44.14'$
 $E = 7.24'$
 $e =$ -----
 $T.R. =$ -----
 $S.E. RUN =$ -----
 $P.C. STA. = 200+33.91$
 $P.T. STA. = 200+78.05$

EXIST. CURVE E_SWNSN-2
 PI STA. = 202+51.53
 $\Delta = 53^\circ 08' 31''$ (RT)
 $D = 102^\circ 21' 52''$
 $R = 55.97'$
 $T = 27.99'$
 $L = 51.91'$
 $E = 6.61'$
 $e =$ -----
 $T.R. =$ -----
 $S.E. RUN =$ -----
 $P.C. STA. = 202+23.54$
 $P.T. STA. = 202+75.45$



BENCHMARK #236
 ELEV. 915.50
 SET NAIL IN EAST FACE OF POWERPOLE ALONG WEST SIDE OF IL. RTE. 47 FIRST POLE SOUTH OF JUNCTION SIGN NORTH BOUND

BENCHMARK #237
 ELEV. 919.67
 SET "X" ACROSS FROM FIRST POWERPOLE NORTH OF CRAIG WOODS GOLF CLUB IN CENTER MEDIAN. (SOUTH END)

BENCHMARK #238
 ELEV. 919.33
 SET "□" ON NORTHEAST CORNER OF IL. RTE. 47 WITH IL. RTE. 176 ON NORTHWEST CORNER OF CONCRETE PAD FOR TRAFFIC CAB.

BENCHMARK #239
 ELEV. 919.97
 SET RAILROAD SPIKE ALONG WEST SIDE OF IL. RTE. 47 IN EAST FACE OF FIRST POWERPOLE NORTH OF PLEASANT VALLEY ROAD SIGN HEADING NORTH BOUND.

BENCHMARK #240
 ELEV. 909.31
 SET "□" ON EAST SIDE CURB LINE OF MEDIAN ±300' NORTH OF PLEASANT VALLEY ROAD.

BENCHMARK #242
 ELEV. 897.52
 SET 4' REBAR ALONG WEST SIDE OF IL. RTE. 47 ADJACENT FROM CORNER OF WIRE FENCE WITH WOODPOST CORNER ±42' OFFSET.

BENCHMARK #243
 ELEV. 901.66
 SET 60D ALONG EAST SIDE OF IL. RTE. 47 IN A 4x4 WOODPOST ON NORTH SIDE OF FIELD ENTRANCE 45± OFF EDGE OF PAVEMENT.

BENCHMARK #244
 ELEV. 901.50
 SET "X" ALONG EAST SIDE OF IL. RTE. 47 FIRST LIGHTPOLE NORTH OF FIELD ENTRANCE SOUTHWEST CORNER OF BASE.

BENCHMARK #245
 ELEV. 903.74
 SET NAIL ON EAST FACE WOODSTOCK/ MARENGO SIGN ON EAST SIDE OF IL. RTE.47 SECOND LIGHTPOLE SOUTH OF IL. RTE. 176 (WEST)

BENCHMARK #246
 ELEV. 906.24
 SET 60D ALONG EAST SIDE OF IL. RTE. 47 IN A 4x4 WOODPOST ON NORTH SIDE OF FIELD ENTRANCE 45± OFF EDGE OF PAVEMENT.

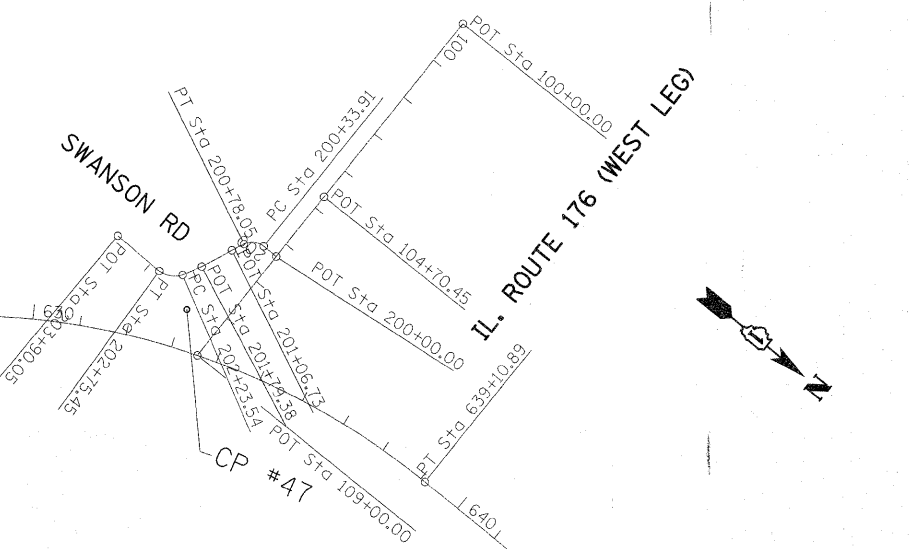
BENCHMARK #247
 ELEV. 912.19
 RAILROAD SPIKE IN WEST FACE OF FIFTH POWERPOLE NORTH OF IL. RTE 176 (WEST) AND IL. RTE. 47 JUNCTION ON EAST SIDE OF IL. RTE. 47.

BENCHMARK #271
 ELEV. 920.21
 NAIL SET IN NORTHWEST FACE OF POWERPOLE ALONG SOUTH SIDE OF IL. RTE.176 (EAST) ADJACENT TO SIGN READING "IDOT ADOPT A HIGHWAY".

BENCHMARK #272
 ELEV. 918.65
 RAILROAD SPIKE IN NORTH FACE OF POWERPOLE ADJACENT TO SIGN "ST. AUBIN NUSERIES 1/4 MILE" ON SOUTH SIDE OF IL. RTE. 176 (EAST).

BENCHMARK #276
 ELEV. 907.59
 IRON ROD SET ALONG SOUTH SIDE OF IL. RTE. 176 (WEST) 2± OFF EDGE OF PAVEMENT APPROXIMATELY 100' EAST OF "JUNCTION IL. RTE. 47" SIGN GOING EAST BOUND.

EXIST. CURVE E_47-7
 PI STA. = 633+95.56
 $\Delta = 39^\circ 01' 43''$ (RT)
 $D = 3^\circ 38' 00''$
 $R = 1,577.00'$
 $T = 558.89'$
 $L = 1,074.22'$
 $E = 96.11'$
 $e =$ -----
 $T.R. =$ -----
 $S.E. RUN =$ -----
 $P.C. STA. = 628+36.67$
 $P.T. STA. = 639+10.89$



MATCHLINE STA. 650+00

FILE NAME =	USER NAME = ulrichkd	DESIGNED -	REVISED -	STATE OF ILLINOIS DEPARTMENT OF TRANSPORTATION	ALIGNMENT, TIES AND BENCHMARKS IL. RTE. 47 AT IL. RTE. 176 (NORTH & SOUTH JCT.)				F.A.P. RTE.	SECTION	COUNTY	TOTAL SHEETS	SHEET NO.
et:\pw\work\p\adot\ulrichkd\d0206787\0144	110-sh-t-ATB.dgn	DRAWN -	REVISED -		SCALE: 1"=200'	SHEET NO.	OF	SHEETS	STA.	TO STA.	McHENRY	60	11
		CHECKED -	REVISED -								CONTRACT NO. 60K18		
		DATE -	REVISED -								ILLINOIS FED. AID PROJECT		