

F.A.P. RTE.	SECTION	COUNTY	TOTAL SHEETS	SHEET NO.
2592	2010-003 I	COOK	43	1
FED. ROAD DIST. NO. 1	ILLINOIS	CONTRACT NO. 60K21		

D-91-448-10

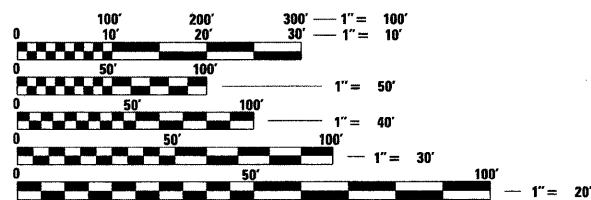
STATE OF ILLINOIS
DEPARTMENT OF TRANSPORTATION
DIVISION OF HIGHWAYS
PROPOSED
HIGHWAY PLANS

F.A.U. 2592: IL 53
US 12 (RAND ROAD) TO LAKE COOK ROAD
SECTION: 2010-003 I
GUARDRAIL, SIGN MAINTENANCE, GRADING
PROJECT: HSIP-2592(002)
COOK COUNTY
C-91-448-10

FOR INDEX OF SHEETS, SEE SHEET NO. 2

IMPROVEMENT LOCATED WITHIN THE VILLAGE OF PALATINE, ARLINGTON HEIGHTS AND UNINCORPORATED COOK COUNTY

TRAFFIC DATA
IL 53
2009 ADT = 107,400
SPEED LIMIT = 55 MPH

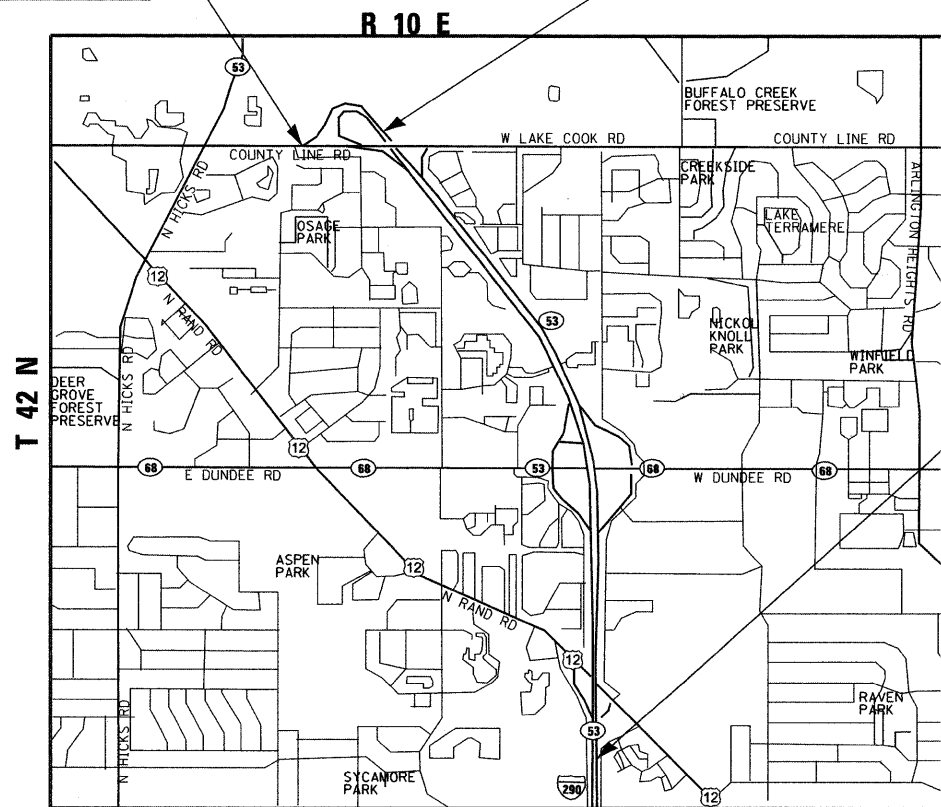


FULL SIZE PLANS HAVE BEEN PREPARED USING STANDARD ENGINEERING SCALES. REDUCED SIZED PLANS WILL NOT CONFORM TO STANDARD SCALES. IN MAKING MEASUREMENTS ON REDUCED PLANS, THE ABOVE SCALES MAY BE USED.

J.U.L.I.E.
 JOINT UTILITY LOCATION INFORMATION FOR EXCAVATION
 1-800-892-0123 OR 811

IMPROVEMENT ENDS
 STA. 15 + 00

STATION EQUATION
 STA. 504 + 00 =
 STA. 0 + 00



IMPROVEMENT BEGINS
 STA. 383 + 00

SCALE: NTS
 PALATINE TOWNSHIP

GROSS LENGTH OF PROJECT = 13600 FT = 2.57 MILES
 NET LENGTH OF PROJECT = 13600 FT = 2.57 MILES



LOCATION OF SECTION INDICATED THUS: - [black rectangle] -

STATE OF ILLINOIS
 DEPARTMENT OF TRANSPORTATION
 DIVISION OF HIGHWAYS

SUBMITTED JANUARY 3, 2010

Diane M. O'Keefe
 DEPUTY DIRECTOR OF HIGHWAYS, REGION ENGINEER

February 4, 2011

Scott E. Stitt, P.E.
 acting ENGINEER OF DESIGN AND ENVIRONMENT

February 4, 2011

Christine M. Reed
 DIRECTOR OF HIGHWAYS, CHIEF ENGINEER

MILLENNIA PROFESSIONAL SERVICES
 THOMAS V. NGO, P.E.
 * 062-058379

Thomas V. Ngo
 DATE: 10/27/10
 SIGNATURE AND SEAL APPLIES TO DRWG.

200 22ND Street, Suite 216, Lombard, IL 60148
 630.705.0110 voice, 630.839.2566 fax
 www.mps-il.com

MILLENNIA PROFESSIONAL SERVICES

**PRINTED BY THE AUTHORITY
 OF THE STATE OF ILLINOIS**

DISTRICT ONE - PLAN PREP ENGINEER: KEN ENG (847) 705-4247

CONTRACT NO. 60K21