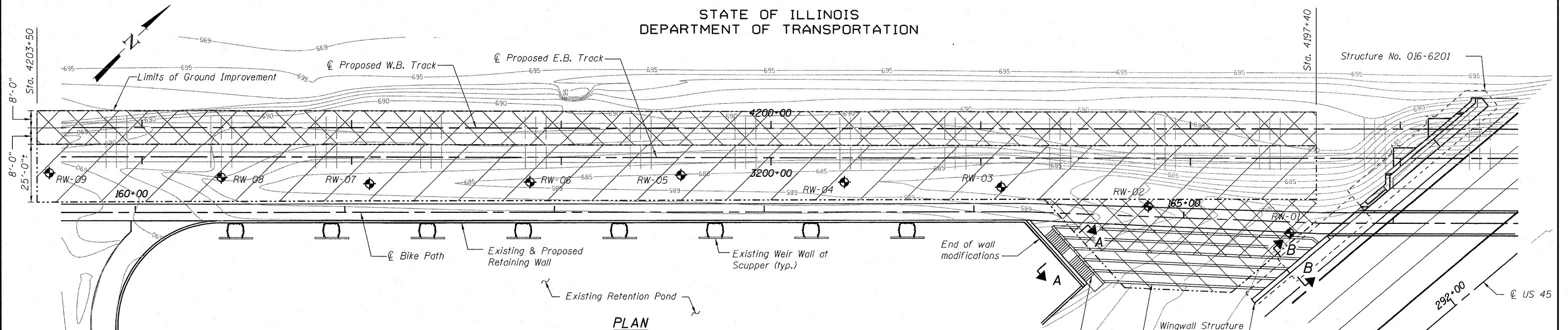
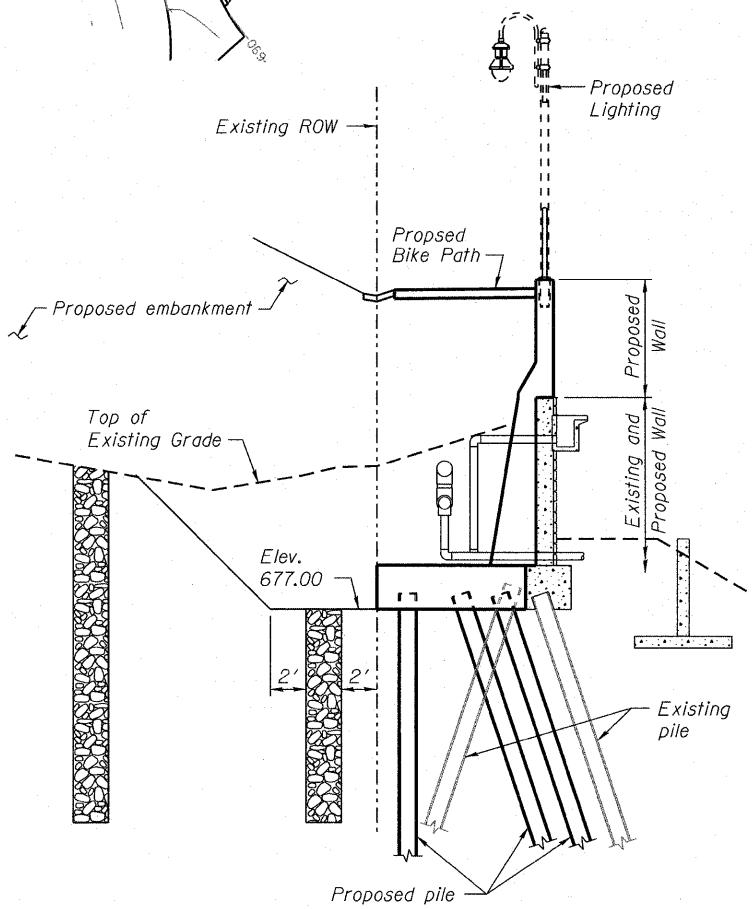
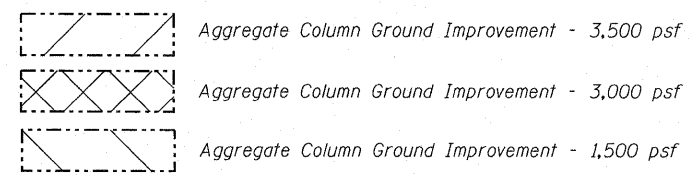


STATE OF ILLINOIS
DEPARTMENT OF TRANSPORTATION

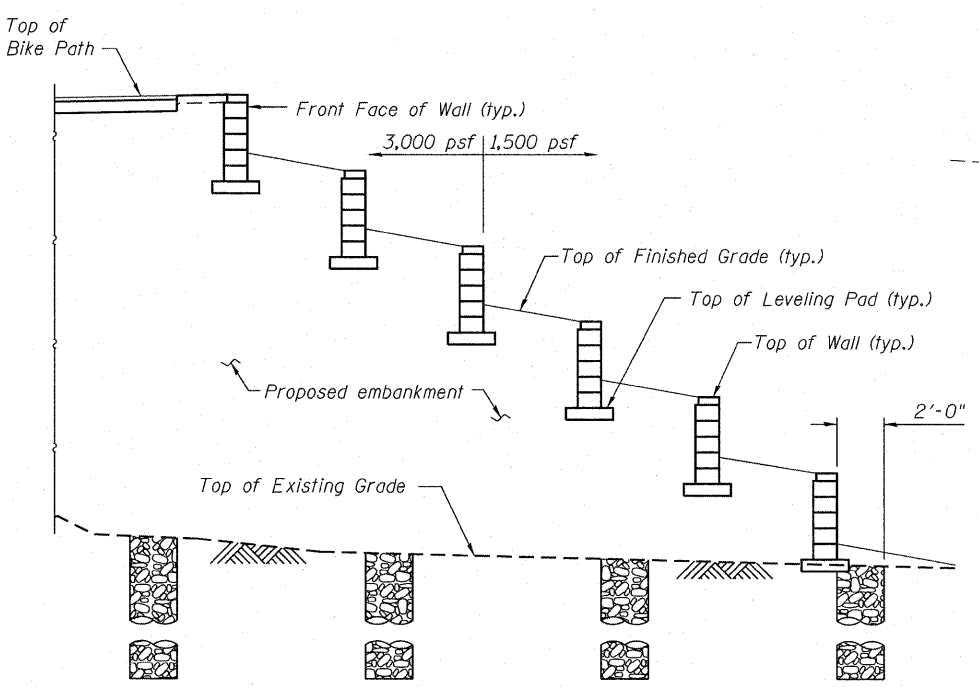


PLAN

EQUIVALENT UNIFORM SERVICE BEARING PRESSURE
(at top of ground improvement)



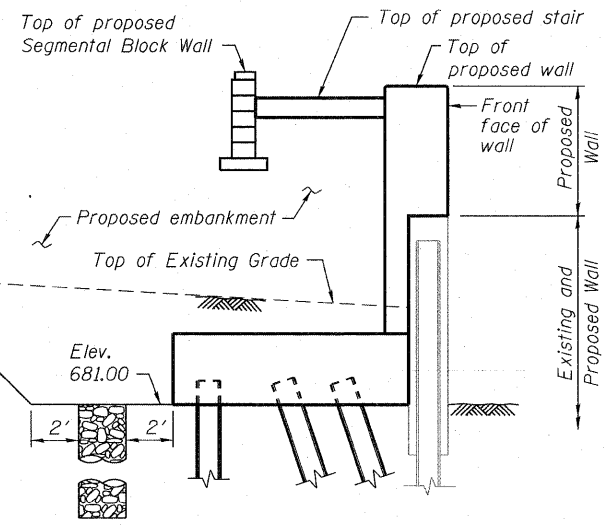
TYPICAL SECTION THROUGH EXISTING AND PROPOSED WALL



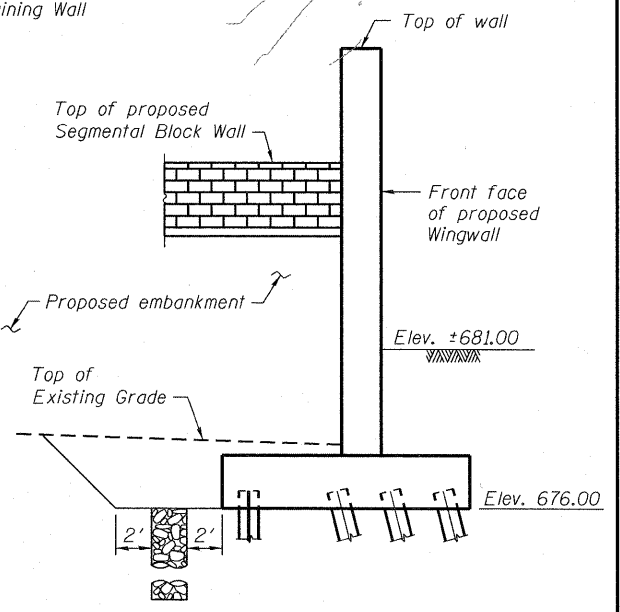
TYPICAL SECTION THROUGH TIERED WALL

GROUND IMPROVEMENT PERFORMANCE REQUIREMENTS

1. Post-construction settlement of MSE wall shall not exceed 1.0 inch.
2. Minimum factor of safety for Global Stability shall be 1.5.
3. Minimum factor of safety for Equivalent Uniform Service Bearing Pressure shall be 2.5.
4. Total settlement shall not exceed 4 inches.



SECTION A-A



SECTION B-B

Notes:
Aggregate column ground improvement shall be designed and installed by the Contractor in accordance with special provision for Aggregate Column Ground Improvement. Existing contours are shown to aid in determining top of improvement elevations.

Vibrator compacted aggregate columns shall be constructed by the bottom feed method. Top feed will only be allowed if the columns are pre-bored the entire length and the Engineer determines that the open columns do not collapse during backfilling and vibration.

TOTAL BILL OF MATERIAL

ITEM	UNIT	QUANTITY
Aggregate Column Ground Improvement	L Sum	1

GROUND IMPROVEMENT

DESIGNED	JCE
CHECKED	GEK
DRAWN	JCE
CHECKED	GEK

McDonough Associates Inc.
Engineers / Architects
130 East Randolph Street Chicago, Illinois 60601

SHEET NO. 9 23 SHEETS	F.A.P RTE.	SECTION	COUNTY	TOTAL SHEETS	SHEET NO.
	330	73 R-B	COOK	136	98
DATE: 12/17/10			ILLINOIS FED. AID PROJECT		
CONTRACT NO. 60K64					