

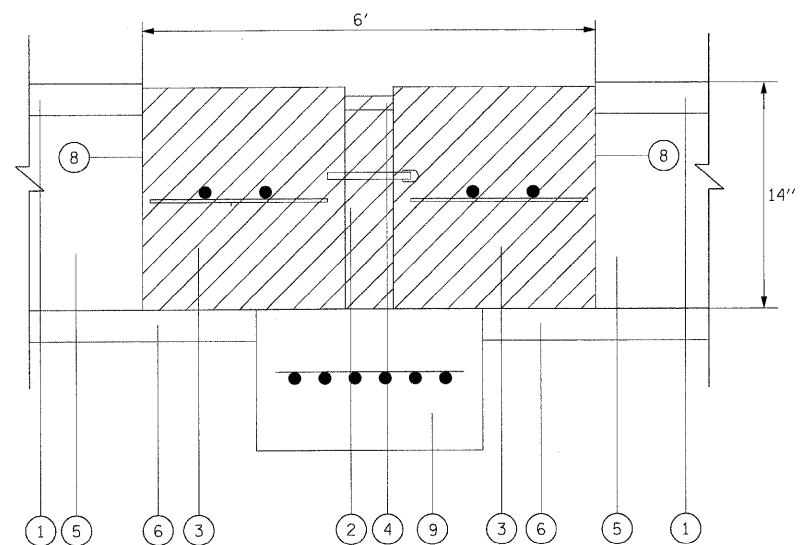
PLAN VIEW OF EXISTING PAVEMENT RELIEF JOINT

**LEGEND**

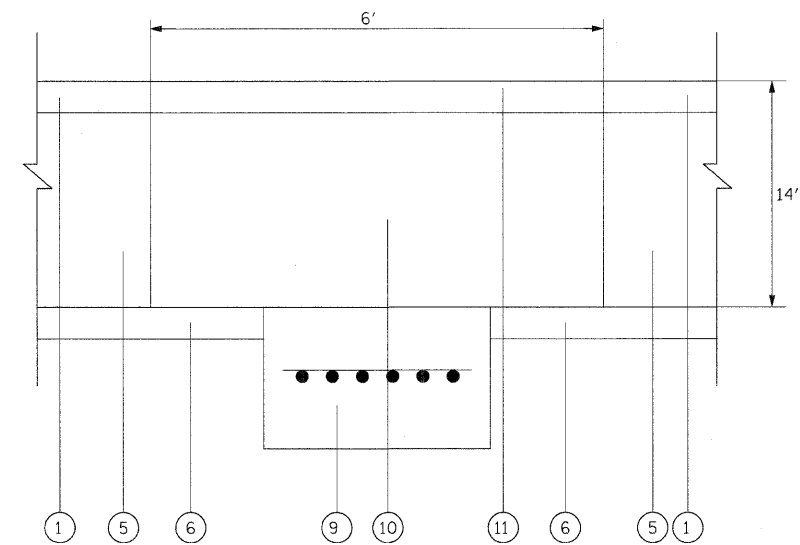
- ① EXISTING SMA OVERLAY, 4"
- ② EXISTING PREFORMED JOINT FILLER REMOVAL
- ③ EXISTING PORTLAND CEMENT CONCRETE REMOVAL
- ④ EXISTING HOT POURED JOINT SEALER REMOVAL
- ⑤ EXISTING P.C.C. PAVEMENT, 10"
- ⑥ EXISTING SUB-BASE
- ⑦ WHEEL SAW CUT (INCLUDED IN THE COST OF PAVEMENT PATCHING)
- ⑧ SAW CUT, FULL DEPTH (INCLUDED IN THE COST OF PAVEMENT PATCHING)
- ⑨ SLEEPER SLAB (NOT TO BE REMOVED OR DAMAGED)
- ⑩ PROPOSED CLASS D PATCHES, 10 INCH
- ⑪ HOT-MIX ASPHALT REPLACEMENT OVER PATCHES, 4"

**NOTE:**

REMOVAL AND DISPOSAL OF EXISTING PAVEMENT RELIEF JOINTS, AS SHOWN ON THE PLANS, WILL NOT BE PAID FOR SEPARATELY, BUT WILL BE CONSIDERED INCIDENTAL TO THE CLASS D PATCH REPLACEMENT AT THE SAME LOCATION.



SECTION A-A  
EXISTING PAVEMENT RELIEF JOINT TO BE REMOVED (TYPICAL)



SECTION A-A  
PROPOSED PAVEMENT RELIEF JOINT TO BE REPLACED BY CLASS D PATCH (TYPICAL)



DESIGNED - LLS/JG	REVISED - 02/15/11 ADDENDUM A		<b>STATE OF ILLINOIS</b> <b>DEPARTMENT OF TRANSPORTATION</b>		<b>PAVEMENT RELIEF JOINT REMOVAL AND REPLACEMENT DETAIL</b>				F.A.I. RTE.	SECTION	COUNTY	TOTAL SHEETS	SHEET NO.
USER NAME = lsupencheck	DRAWN -								80	99-1-RS-4	WILL	116	30
PLOT SCALE = 12.5:1	CHECKED - JAL								CONTRACT NO. 60M63				
PLOT DATE = 14-FEB-2011	DATE - 01/21/2011								FED. ROAD DIST. NO. 1   ILLINOIS   FED. AID PROJECT				
FILE NAME = IP_PWP\dms34560\1606M63-shr-detail1.dgn		SCALE: N.T.S.		SHEET NO. 1 OF 1 SHEETS		STA. N/A TO STA. N/A							