

INDEX OF SHEETS

1 COVER SHEET
 2 INDEX OF SHEETS, GENERAL NOTES, STATE STANDARDS, AND MIXTURE REQUIREMENTS
 3 - 4 SUMMARY OF QUANTITIES
 5 - 8 TYPICAL SECTIONS
 9 - 10 SCHEDULE OF QUANTITIES
 11 SCHEMATIC DIAGRAM
 12 - 29 PROPOSED ROADWAY PLANS
 30 - 31 DETAILS
 32 MAINTENANCE OF TRAFFIC - GENERAL NOTES
 33 MAINTENANCE OF TRAFFIC - TEMPORARY LANE CLOSURES
 34 - 38 MAINTENANCE OF TRAFFIC - STAGE 1
 39 - 40 MAINTENANCE OF TRAFFIC - WEEKEND LANE CLOSURE DETAIL
 41 - 45 MAINTENANCE OF TRAFFIC - STAGE 2
 46 - 50 MAINTENANCE OF TRAFFIC - STAGE 3
 51 MAINTENANCE OF TRAFFIC - TEMPORARY INFORMATION SIGNING
 52 - 53 SIGNING SCHEDULE OF QUANTITIES
 54 - 71 PAVEMENT MARKING AND SIGNING PLANS
 72 - 80 SIGNING DETAILS
 81 - 84 STRUCTURAL PLANS - I-80 OVER FRONTAGE ROAD
 85 - 88 STRUCTURAL PLANS - I-80 OVER I-55
 89 - 94 STRUCTURAL PLANS - I-80 OVER ROCK RUN CREEK
 95 - 97 STRUCTURAL PLANS - I-80 OVER HOUBOLT ROAD
 98 - 102 STRUCTURAL PLANS - I-80 OVER JOLIET JUNCTION TRAIL
 103 - 116 DISTRICT ONE DETAILS

IDOT STANDARDS

000001-06 STANDARDS SYMBOLS, ABBREVIATIONS AND PATTERNS
 420401-08 BRIDGE APPROACH PAVEMENT CONNECTOR
 442201-03 CLASS C AND D PATCHES
 482011-03 HMA SHLD. STRIPS/SHLDS WITH RESURFACING OR WIDENING AND RESURFACING PROJECTS
 609001-05 BRIDGE APPROACH SHOULDER PAVEMENT AND DRAIN
 635001-01 DELINEATORS
 642001-01 SHOULDER RUMBLE STRIPS
 701400-05 APPROACH TO LANE CLOSURE, FREEWAY/EXPRESSWAY
 701401-06 LANE CLOSURE, FREEWAY/EXPRESSWAY
 701406-06 LANE CLOSURE, FREEWAY/EXPRESSWAY, DAY OPERATIONS ONLY
 701411-07 LANE CLOSURE, MULTILANE, ENTRANCE AT ENTRANCE OR EXIT RAMP FOR SPEEDS > 45 MPH
 701426-04 LANE CLOSURE, MULTILANE, INTERMITTENT OR MOVING OPER. FOR SPEEDS > 45 MPH
 701446-02 TWO LANE CLOSURE FREEWAY/EXPRESSWAY
 701901-01 TRAFFIC CONTROL DEVICES
 704001-06 TEMPORARY CONCRETE BARRIER
 720001-01 SIGN PANEL MOUNTING DETAILS
 720006-02 SIGN PANEL ERECTION DETAILS
 720011-01 METAL POSTS FOR SIGNS, MARKERS & DELINEATORS
 729001-01 APPLICATIONS OF TYPES A & B METAL POSTS (FOR SIGNS & MARKERS)
 720021-02 SIGN PANELS EXTRUDED ALUMINUM TYPE

DISTRICT 1 DETAILS

BD400-04 (BD-22) PAVEMENT PATCHING FOR HMA SURFACED PAVEMENT
 BD400-05 (BD-32) BUTT JOINT AND HMA TAPER DETAILS
 BD600-03 (BD-08) DETAILS FOR FRAMES AND LIDS ADJUSTMENT
 TC-08 FREEWAY ENTRANCE AND EXIT RAMP CLOSURE DETAILS
 TC-09 TRAFFIC CONTROL DETAILS FOR FREEWAY SINGLE & MULTI-LANE WEAVE
 TC-12 MULT-LANE FREEWAY PAVEMENT MARKINGS DETAILS
 TC-17 TRAFFIC CONTROL DETAILS FOR FREEWAY SHOULDER CLOSURES AND PARTIAL RAMP CLOSURES
 TC-18 SIGNING FOR FLAGGING OPERATIONS AT WORK ZONE OPENINGS
 TC-27 MILE POST MARKERS - GORE SIGNS - MAJOR GUIDE SIGN LAYOUT - ARROWS
 BE-600 ELECTRONIC CONNECTION TO SIGN STRUCTURE - SPAN TYPE
 BE-601 ELECTRONIC CONNECTION TO SIGN STRUCTURE - CANTILEVER TYPE

GENERAL NOTES

- BEFORE STARTING ANY EXCAVATION, THE CONTRACTOR SHALL CALL "JULIE" AT 800-892-0123 FOR FIELD LOCATIONS OF BURIED UTILITIES. 48 HOUR ADVANCE NOTIFICATION IS REQUIRED.
- THE CONTRACTOR SHALL COORDINATE WORK ACTIVITIES WITH UTILITY COMPANIES AS REQUIRED.
- THE CONTRACTOR SHALL COORDINATE WORK ACTIVITIES WITH ADJACENT IDOT CONTRACTS 60M64, 60M65 AND 60M66.
- THE CONTRACTOR WILL NOT BE ALLOWED TO SET UP A YARD OR FIELD OFFICE ON STATE PROPERTY WITHOUT WRITTEN PERMISSION FROM THE DEPARTMENT.
- THE CONTRACTOR SHALL NOTIFY THE EXPRESSWAY TRAFFIC FIELD ENGINEER AT 847-705-4151 AT LEAST 72 HOURS PRIOR TO FINAL PAVEMENT MARKING INSTALLATION.
- THE CONTRACTOR SHALL CONTACT THE DISTRICT ONE TRAFFIC CONTROL SUPERVISOR AT (847) 705-4151 A MINIMUM OF 72 HOURS IN ADVANCE OF BEGINNING WORK.
- THE ALIGNMENTS AND SUPPORTING DATA SHOWN IN THE PLANS WAS DEVELOPED FROM PREVIOUS PLANIMETRICS AND AERIAL PHOTOGRAPHY FURNISHED BY THE DEPARTMENT AND IS NOT THE RESULT OF A GROUND SURVEY. THEREFORE, THE ALIGNMENTS AND SUPPORTING DATA SHOWN IN THE PLANS IS FOR REFERENCE PURPOSES ONLY. THE RELATIVE ACCURACY OF THE INFORMATION IS UNKNOWN AND CANNOT BE GUARANTEED. THE CONTRACTOR MAY BE REQUIRED TO ADJUST LAYOUT TO MATCH ACTUAL FIELD CONDITIONS AND THE INTENT OF THE PLANS.
- THE CONTRACTOR SHALL USE CARE IN WORKING NEAR ANY AND ALL EXISTING ITEMS. ITEMS DAMAGED WILL BE REPAIRED BY THE CONTRACTOR AT THE CONTRACTOR'S OWN EXPENSE.
- DRAINAGE ADJUSTMENT, CLEANING OR RECONSTRUCTION LOCATIONS WILL BE DETERMINED IN THE FIELD BY THE ENGINEER.
- EXISTING BROKEN FRAMES AND LIDS SHALL BE REMOVED AND DISPOSED OF BY THE CONTRACTOR AND SHALL BE REPLACED AS DIRECTED BY THE ENGINEER. REPLACEMENT FRAMES AND LIDS WILL BE PAID FOR IN ACCORDANCE WITH ARTICLE 109.04 OF THE STANDARD SPECIFICATIONS UNLESS A SEPARATE PAY ITEM HAS BEEN PROVIDED.
- VERTICAL CLEARANCES OF BRIDGES SHALL BE MAINTAINED. THE CONTRACTOR SHALL VERIFY ALL BRIDGE CLEARANCE BEFORE AND AFTER CONSTRUCTION AND FURNISH RESULTS TO THE ENGINEER. THIS WORK SHALL BE INCLUDED IN THE LUMP SUM PRICE FOR CONSTRUCTION LAYOUT.
- BEFORE BEGINNING ANY WORK, THE CONTRACTOR SHALL RETAIN AND RECORD FOR FUTURE REFERENCE, ALL EXISTING PAVEMENT MARKING LINES (AND RAISED REFLECTIVE PAVEMENT MARKINGS) IN ORDER THAT THESE LOCATIONS CAN BE RE-ESTABLISHED FOR STRIPING. EXACT LOCATIONS OF ALL PAVEMENT MARKING SHALL BE DIRECTED THE ENGINEER.
- IT SHALL BE THE CONTRACTOR'S RESPONSIBILITY TO VERIFY ALL DIMENSIONS AND CONDITIONS EXISTING IN THE FIELD PRIOR TO CONSTRUCTION AND ORDERING MATERIALS.

IF WEDGE IS INSTALLED FOLLOWING BINDER REMOVAL, PROPOSED BINDER MUST BE PLACED WITHIN 72 HOURS.


GENERAL NOTES (CONTINUED)

- THE CONTRACTOR SHALL TAKE ALL NECESSARY SAFETY PRECAUTIONS TO PROTECT AND PROVIDE ACCESS TO ABUTTING PROPERTY, UTILITIES, PEDESTRIANS, AND VEHICULAR TRAFFIC.
- SAW CUTTING IS INCLUDED TO THE PROPOSED ITEM OF WORK SPECIFIED, UNLESS OTHERWISE SHOWN IN PLAN.
- ALL PAVEMENT PATCHING LOCATIONS WILL BE DETERMINED IN THE FIELD BY THE ENGINEER.
- WHEN MILLED PAVEMENT IS OPEN TO TRAFFIC, THE MAXIMUM GRADE DIFFERENTIAL BETWEEN TRAVEL LANES SHALL NOT EXCEED 1-1/2". WHEN NEWLY PLACED ASPHALT IS OPENED TO TRAFFIC, THE MAXIMUM LIFT DIFFERENCE BETWEEN THE TRAVEL LANES SHALL NOT EXCEED 2". GRADE DIFFERENTIALS BETWEEN TRAVEL LANES UP TO A MAXIMUM OF 4" ARE ALLOWED WITH INSTALLATION OF A TEMPORARY WEDGE OR MILLED SLOPED EDGE AT A MINIMUM GRADE OF 1:3 (V:H). INSTALLATION AND REMOVAL OF THE TEMPORARY WEDGES AND/OR TAPERED MILLED EDGES SHALL NOT BE PAID FOR SEPARATELY, BUT SHALL BE INCLUDED IN THE COST OF THE CONTRACT.
- WHERE ARTIFICIAL LIGHTING IS USED IN NIGHT OPERATIONS, THE CONTRACTOR SHALL EXERCISE THE UTMOST PRECAUTIONS IN PREVENTING ADVERSE VISIBILITY TO THE MOTORING PUBLIC AND ADJOINING RESIDENTIAL AREAS.
- EXISTING PAVEMENT MARKINGS THAT CONFLICT WITH REVISED TRAFFIC PATTERNS SHALL BE REMOVED AS DIRECTED BY THE ENGINEER. THIS WORK WILL BE PAID FOR A THE CONTRACT UNIT PRICE PER SQUARE FOOT FOR PAVEMENT MARKING REMOVAL.
- TEMPORARY EDGE LINES IN THE SUGGESTED MAINTENANCE OF TRAFFIC SHALL BE INSTALLED PRIOR TO RE-OPENING THE LANES TO TRAFFIC.
- VERTICAL BARRICADES WILL REMAIN IN PLACE ALONG THE EDGES OF PAVEMENT AS SHOWN IN THE SUGGESTED MAINTENANCE OF TRAFFIC PLANS UNTIL THE SURFACE COURSE AND PROPOSED PAVEMENT MARKING EDGE LINES HAVE BEEN COMPLETED.
- SURFACE TESTING OF ASPHALT PAVEMENTS WILL BE PERFORMED BY THE CONTRACTOR AS DESCRIBED IN THE SPECIAL PROVISIONS AND THE COST SHALL BE INCLUDED IN THE COST OF THE HMA ITEMS BEING TESTED.
- ALL TRAFFIC CONTROL, DEVICES, BARRICADES, DRUMS, LANE CLOSURES, TEMPORARY PAVEMENT MARKINGS, ETC. ALONG THE CROSS ROADS WITHIN THE CONTRACT LIMITS, UNLESS OTHERWISE SPECIFIED IN THE TRAFFIC CONTROL PLANS, SHALL NOT BE PAID FOR SEPARATELY, BUT SHALL BE INCLUDED IN THE LUMP SUM PRICE FOR "TRAFFIC CONTROL AND PROTECTION (EXPRESSWAYS)" THE CONTRACTOR SHALL USE THE APPROPRIATE IDOT OR DISTRICT ONE STANDARD AND OBTAIN APPROVAL FROM THE ENGINEER.
- THE CONTRACTOR SHALL MODIFY, OR SUPPLEMENT, EXISTING SIGN PANEL MOUNTING BRACKETS AS REQUIRED FOR PROPER INSTALLATION OF THE PROPOSED SIGN PANELS, INCLUDING ALL LABOR, EQUIPMENT, MATERIALS, AND HARDWARE AS DIRECTED BY THE ENGINEER. THIS WORK SHALL BE INCLUDED IN THE COST OF SIGN PANEL - TYPE 3.
- CONTRACTOR TO PATCH BEFORE MILLING. CLASS D PATCHES SHALL BE PLACED ON THE MAINLINE AND CLASS C PATCHES SHALL BE PLACED ON THE RAMPS AS DIRECTED BY THE ENGINEER.

HOT-MIX ASPHALT REQUIREMENTS

| MIXTURE TYPE | AIR VOIDS | THICKNESS |
|---|---------------|-----------|
| MAINLINE AND RAMP RESURFACING | | |
| POLYMERIZED HOT-MIX ASPHALT SURFACE COURSE, STONE MATRIX ASPHALT, N80 | 3.5% @ 80 GYR | 2" |
| POLYMERIZED HOT-MIX ASPHALT BINDER COURSE, STONE MATRIX ASPHALT, N80 | 3.5% @ 80 GYR | 2" |
| OUTSIDE SHOULDERS | | |
| HOT-MIX ASPHALT BINDER COURSE, IL-19.0, N70 | 4% @ 70 GYR | 2 1/2" |
| HOT-MIX ASPHALT SURFACE COURSE, MIX "D", N70 (IL 9.5mm) | 4% @ 70 GYR | 1 1/2" |
| PATCHING | | |
| CLASS D PATCHES (HMA BINDER IL-25mm) | 4% @ 105 GYR | 10" |
| HMA REPLACEMENT OVER PATCHES (HMA BINDER IL-19mm) | 4% @ 70 GYR | 4" |
| TEMPORARY PAVEMENT | | |
| TEMP PVMT (INTERSTATE) (HMA BINDER IL-19 mm) | 4% @ 70 GYR | 8 1/2" |
| HMA SURFACE COURSE, MIX "D", N70 (IL 9.5mm) | 4% @ 70 GYR | 1 1/2" |

- THE UNIT WEIGHT USED TO CALCULATE ALL HOT-MIX SURFACE MIXTURES IS 112 LBS/SQ YD/INCH THICKNESS.
- THE "AC TYPE" FOR POLYMERIZED HMA MIXES SHALL BE "SBS/SBR PG 70-22" AND FOR NON-POLYMERIZED HMA THE "AC TYPE" SHALL BE "PG 64-22" UNLESS MODIFIED BY DISTRICT ONE SPECIAL PROVISIONS. FOR "PERCENT OF RAP" SEE DISTRICT ONE SPECIAL PROVISIONS.
- PAY FOR PERFORMANCE PERTAINS TO THE MAINLINE SMA SURFACE AND SMA BINDER ONLY.
- IF THE CONTRACTOR CHOOSES TO USE CONCRETE FOR THE TEMPORARY PAVEMENT, THE THICKNESS SHALL BE 10".

| | | | | | | | | | | | | |
|-------------------------|-------------------------------|---|---|--|--|--|-------------------------------|---|-----------|--------------|-----------|---|
| DESIGNED - LLS/JG | REVISED - 02/15/11 ADDENDUM A |  | STATE OF ILLINOIS DEPARTMENT OF TRANSPORTATION | | INDEX OF SHEETS, GENERAL NOTES, STATE STANDARDS, AND MIXTURE REQUIREMENTS | | F.A.I. RTE. | SECTION | COUNTY | TOTAL SHEETS | SHEET NO. | |
| USER NAME = lsupeneck | DRAWN - PMS/DC | | | | | | REVISED - 03/04/11 ADDENDUM B | 80 | 99-1-RS-4 | WILL | 116 | 2 |
| PLOT SCALE = 1/8"=1' | CHECKED - JAL | | | | | | REVISED - | CONTRACT NO. 60M63 | | | | |
| PLOT DATE = 15-FEB-2011 | DATE - 01/21/2011 | | | | | | REVISED - | FED. ROAD DIST. NO. 1 ILLINOIS FED. AID PROJECT | | | | |

| SPECIALTY ITEM | CODE NUMBER | ITEM | UNIT | URBAN 100% STATE | | | CONSTRUCTION TYPE CODE | | |
|----------------|-------------|---|--------|---------------------|---------|------|------------------------|------|-------|
| | | | | TOTAL QUANTITY | 0005 | 0014 | 0005 | 0014 | 0005 |
| | 20100110 | TREE REMOVAL (6 TO 15 UNITS DIAMETER) | UNIT | 370 | | | | | 370 |
| | 20100210 | TREE REMOVAL (OVER 15 UNITS DIAMETER) | UNIT | 405 | | | | | 405 |
| | 20101300 | TREE PRUNING (1 TO 10 INCH DIAMETER) | EACH | 40 | | | | | 40 |
| | 20101350 | TREE PRUNING (OVER 10 INCH DIAMETER) | EACH | 51 | | | | | 51 |
| | 21101605 | TOPSOIL FURNISH AND PLACE, 2" | SQ YD | 2,335 | | | | | 2,335 |
| | 25000210 | SEEDING, CLASS 2A | ACRE | 3.5 | | | | | 3.5 |
| | 25000310 | SEEDING, CLASS 4 | ACRE | 37.0 | | | | | 37.0 |
| | 25000400 | NITROGEN FERTILIZER NUTRIENT | POUND | 1,395 | | | | | 1,395 |
| | 25000500 | PHOSPHORUS FERTILIZER NUTRIENT | POUND | 1,395 | | | | | 1,395 |
| | 25000600 | POTASSIUM FERTILIZER NUTRIENT | POUND | 1,395 | | | | | 1,395 |
| | 25000750 | MOWING | ACRE | 45.0 | | | | | 45.0 |
| | 25003210 | INTERSEEDING, CLASS 2A | ACRE | 12.0 | | | | | 12.0 |
| | 25100115 | MULCH, METHOD 2 | ACRE | 3.0 | | | | | 3.0 |
| | 25100630 | EROSION CONTROL BLANKET | SQ YD | 325 | | | | | 325 |
| | 28000250 | TEMPORARY EROSION CONTROL SEEDING | POUND | 300 | | | | | 300 |
| | 40600100 | BITUMINOUS MATERIALS (PRIME COAT) | GALLON | 36,976 | 36,976 | | | | |
| | 40600300 | AGGREGATE (PRIME COAT) | TON | 643 | 643 | | | | |
| | 40600400 | MIXTURE FOR CRACKS, JOINTS, AND FLANGEWAYS | TON | 28 | 28 | | | | |
| | 40600895 | CONSTRUCTING TEST STRIP | EACH | 2 | 2 | | | | |
| | 40600982 | HOT-MIX ASPHALT SURFACE REMOVAL - BUTT JOINT | SQ YD | 251 | 251 | | | | |
| | 40601005 | HOT-MIX ASPHALT REPLACEMENT OVER PATCHES | TON | 52 | 52 | | | | |
| | 40603085 | HOT-MIX ASPHALT BINDER COURSE, IL-19.0, N70 | TON | 5,853 | 5,853 | | | | |
| | 40603148 | POLYMERIZED HOT-MIX ASPHALT BINDER COURSE, STONE MATRIX ASPHALT, N80 | TON | 16,028 | 16,028 | | | | |
| | 40603153 | POLYMERIZED HOT-MIX ASPHALT SURFACE COURSE, STONE MATRIX ASPHALT, N80 | TON | 16,028 | 16,028 | | | | |
| | 40603340 | HOT-MIX ASPHALT SURFACE COURSE, MIX "D", N70 | TON | 3,955 | 3,955 | | | | |
| | 44000100 | PAVEMENT REMOVAL | SQ YD | 155 | 155 | | | | |
| | 44000157 | HOT-MIX ASPHALT SURFACE REMOVAL, 2" | SQ YD | 3,374 | 3,374 | | | | |
| | 44000165 | HOT-MIX ASPHALT SURFACE REMOVAL, 4" | SQ YD | 184,879 | 184,879 | | | | |
| | 44002216 | HOT-MIX ASPHALT REMOVAL OVER PATCHES, 4" | SQ YD | 345 | 345 | | | | |
| | 44201349 | CLASS C PATCHES, TYPE I, 10 INCH | SQ YD | 30 | 30 | | | | |
| | 44201353 | CLASS C PATCHES, TYPE II, 10 INCH | SQ YD | 20 | 20 | | | | |
| | 44201357 | CLASS C PATCHES, TYPE III, 10 INCH | SQ YD | 20 | 20 | | | | |
| | 44201359 | CLASS C PATCHES, TYPE IV, 10 INCH | SQ YD | 50 | 50 | | | | |
| | 44201761 | CLASS D PATCHES, TYPE I, 10 INCH | SQ YD | 20 | 20 | | | | |
| | 44201765 | CLASS D PATCHES, TYPE II, 10 INCH | SQ YD | 22 | 22 | | | | |

| SPECIALTY ITEM | CODE NUMBER | ITEM | UNIT | URBAN 100% STATE | | | CONSTRUCTION TYPE CODE | | |
|----------------|-------------|---|--------|---------------------|--------|------|------------------------|------|--------|
| | | | | TOTAL QUANTITY | 0005 | 0014 | 0005 | 0014 | 0005 |
| | 44201769 | CLASS D PATCHES, TYPE III, 10 INCH | SQ YD | 238 | 238 | | | | |
| | 44201771 | CLASS D PATCHES, TYPE IV, 10 INCH | SQ YD | 50 | 50 | | | | |
| | 48102100 | AGGREGATE WEDGE SHOULDER, TYPE B | TON | 2100 | 2100 | | | | |
| | 50157300 | PROTECTIVE SHIELD | SQ YD | 394 | | | | | 394 |
| | 58700300 | CONCRETE SEALER | SQ FT | 38,590 | | | | | 38,590 |
| | 64200105 | SHOULDER RUMBLE STRIPS | FOOT | 75,829 | 75,829 | | | | |
| | 67000600 | ENGINEER'S FIELD LABORATORY | CAL MO | 9 | 9 | | | | |
| | 67100100 | MOBILIZATION | L SUM | 1 | 1 | | | | |
| | 70106800 | CHANGEABLE MESSAGE SIGN | CAL MO | 20 | 20 | | | | |
| | 70300240 | TEMPORARY PAVEMENT MARKING - LINE 6" | FOOT | 13,113 | 13,113 | | | | |
| | 70301000 | WORK ZONE PAVEMENT MARKING REMOVAL | SQ FT | 3275 | 3275 | | | | |
| | 70400100 | TEMPORARY CONCRETE BARRIER | FOOT | 10,150 | 10,150 | | | | |
| | 70400200 | RELOCATE TEMPORARY CONCRETE BARRIER | FOOT | 2,963 | 2,963 | | | | |
| | 72000100 | SIGN PANEL - TYPE 1 | SQ FT | 362 | 362 | | | | |
| | 72000200 | SIGN PANEL - TYPE 2 | SQ FT | 485 | 485 | | | | |
| | 72000300 | SIGN PANEL - TYPE 3 | SQ FT | 3,849 | 3,849 | | | | |
| | 72400100 | REMOVE SIGN PANEL ASSEMBLY - TYPE A | EACH | 12 | 12 | | | | |
| | 72400200 | REMOVE SIGN PANEL ASSEMBLY - TYPE B | EACH | 22 | 22 | | | | |
| | 72400320 | REMOVE SIGN PANEL - TYPE 2 | SQ FT | 150 | 150 | | | | |
| | 72400330 | REMOVE SIGN PANEL - TYPE 3 | SQ FT | 3,801 | 3,801 | | | | |
| | 72600100 | MILE POST MARKER ASSEMBLY | EACH | 17 | 17 | | | | |
| | 72900200 | METAL POST - TYPE B | FOOT | 158 | 158 | | | | |
| | 73000100 | WOOD SIGN SUPPORT | FOOT | 1703 | 1703 | | | | |
| | 73700100 | REMOVE GROUND MOUNTED SIGN SUPPORT | EACH | 57 | 57 | | | | |
| | 78000200 | THERMOPLASTIC PAVEMENT MARKING - LINE 4" | FOOT | 75,331 | 75,331 | | | | |
| | 78000500 | THERMOPLASTIC PAVEMENT MARKING - LINE 8" | FOOT | 10,035 | 10,035 | | | | |
| | 78000600 | THERMOPLASTIC PAVEMENT MARKING - LINE 12" | FOOT | 2,341 | 2,341 | | | | |
| | 78004210 | PREFORMED PLASTIC PAVEMENT MARKING, TYPE B-INLAID - LINE 4" | FOOT | 221 | 221 | | | | |
| | 78004220 | PREFORMED PLASTIC PAVEMENT MARKING, TYPE B-INLAID - LINE 5" | FOOT | 10,183 | 10,183 | | | | |
| | 78004240 | PREFORMED PLASTIC PAVEMENT MARKING, TYPE B-INLAID - LINE 8" | FOOT | 239 | 239 | | | | |
| | 78008210 | EPOXY PAVEMENT MARKING - LINE 4" | FOOT | 9800 | 9800 | | | | |
| | 78008210 | POLYUREA PAVEMENT MARKING TYPE I - LINE 4" | FOOT | 7,718 | 7,718 | | | | |
| | 78008220 | POLYUREA PAVEMENT MARKING TYPE I - LINE 5" | FOOT | 1,214 | 1,214 | | | | |
| | 78008240 | POLYUREA PAVEMENT MARKING TYPE I - LINE 8" | FOOT | 5,680 | 5,680 | | | | |
| | 78008250 | POLYUREA PAVEMENT MARKING TYPE I - LINE 12" | FOOT | 808 | 808 | | | | |
| | 78100100 | RAISED REFLECTIVE PAVEMENT MARKER | EACH | 1,058 | 1,058 | | | | |

| | |
|-------------------|-----------|
| DESIGNED - LLS/JG | REVISOR - |
| DRAWN - PMS/DC | REVISOR - |
| CHECKED - JAL | REVISOR - |
| DATE - 01/21/2011 | REVISOR - |



STATE OF ILLINOIS
DEPARTMENT OF TRANSPORTATION

SUMMARY OF QUANTITIES

| | | | | |
|---|-------------------|-------------|--------------------|-------------|
| F.A.I. RTE. 80 | SECTION 99-1-RS-4 | COUNTY WILL | TOTAL SHEETS 116 | SHEET NO. 3 |
| FED. ROAD DIST. NO. 1 ILLINOIS FED. AID PROJECT | | | CONTRACT NO. 60M63 | |

Rev. 3-4-11
Rev. 2-25-11

STAGE 1

PRIOR TO STAGE 1 WORK, GRIND AND RESURFACE INSIDE SHOULDER TO REMOVE RUMBLE STRIP. MILL AND RESURFACE SHOULDER WITH 2" HMA SURFACE COURSE, MIX D, IL-9.5. LIMIT OF THIS WORK INCLUDES FROM STATION 264+56 TO STATION 320+69.

INSTALL TEMPORARY SIGNING, STRIPING, AND OTHER TRAFFIC CONTROL DEVICES NECESSARY FOR THE STAGE 1 TRAFFIC CONFIGURATION, INCLUDING THE NECESSARY MODIFICATIONS TO THE EXISTING GROUND MOUNTED AND OVERHEAD SIGNS.

ADD 10" OF TEMPORARY PAVEMENT (INTERSTATE) IN RAMP GORE FROM STATION 271+12 TO STATION 272+40.

TRAFFIC

1. PRIOR TO THE EASTBOUND I-80 STRUCTURE OVER FRONTAGE ROAD AT STATION 269+36, SHIFT THE TWO EASTBOUND LANES TO THE INSIDE SHOULDER AND LANE 1.
2. MAINTAIN TWO EASTBOUND LANES ON THE INSIDE SHOULDER AND LANE 1 TO THE SOUTHBOUND AND NORTHBOUND I-55 RAMP, AT WHICH POINT AN AUXILIARY LANE IS ADDED.
3. TRAFFIC CONTINUES ON THE INSIDE SHOULDER AND LANE 1 EAST OF THE I-55 RAMP TO APPROXIMATELY STATION 320+69, AT WHICH POINT TRAFFIC IS OPENED BACK TO THE EXISTING CONFIGURATION.

CONSTRUCTION

UTILIZING LANE CLOSURES IMPLEMENTED IN THE STAGED MAINTENANCE OF TRAFFIC PLANS, GRIND 2" OUTSIDE SHOULDER AND 2" SURFACE ASPHALT IN LANE 2.

GRIND 2" OUTSIDE SHOULDER AND 2" SURFACE ASPHALT IN LANE 2 FOR ALL OTHER LOCATIONS NOT WITHIN THE STAGED MAINTENANCE OF TRAFFIC PLANS. IDOT STANDARD 701406-05 SHALL BE FOLLOWED FOR TEMPORARY LANE CLOSURES.

I-80 EB OVER FRONTAGE ROAD (SN 099-0042)

1. SEAL DECK AND PARAPET
2. BRIDGE DECK PATCHING

I-80 EB OVER I-55 (SN 099-0044)

1. PARTIAL BRIDGE DECK PATCHING
2. SEAL DECK AND PARAPETS
3. DECK JOINT REPAIRS (SILICONE SEAL)

I-80 EB OVER ROCK RUN CREEK (SN 099-0046)

1. BRIDGE DECK PATCHING
2. DECK JOINT REPAIRS (SILICONE SEAL)
3. APPROACH SLAB PATCHING
4. STRUCTURAL REPAIR OF CONCRETE SUBSTRUCTURE
5. PLUG EXISTING 6" DIA. DECK DRAINS
6. CONCRETE SEALER
7. CLEAN AND PAINT EXPOSED REBAR

STAGE 2

PRIOR TO STAGE 2 WORK, TRAFFIC IS TO BE REDUCED TO ONE LANE TO ACCOMMODATE THE WORK ZONE ON THE EASTBOUND I-80 STRUCTURE OVER I-55. A WEEKEND LANE CLOSURE IS TO BE IMPLEMENTED AND FOLLOW IDOT STANDARD 701401-06. TRAFFIC WILL BE SHIFTED TO THE INSIDE SHOULDER WITH AN AUXILIARY LANE IN LANE 1.

INSTALL TEMPORARY SIGNING, STRIPING, AND OTHER TRAFFIC CONTROL DEVICES NECESSARY FOR THE STAGE 2 TRAFFIC CONFIGURATION, INCLUDING THE NECESSARY MODIFICATIONS TO THE EXISTING GROUND MOUNTED AND OVERHEAD SIGNS.

TRAFFIC

1. PRIOR TO THE EASTBOUND I-80 STRUCTURE OVER FRONTAGE ROAD AT STATION 269+37, SPLIT THE TWO EASTBOUND LANES AND SHIFT TO THE INSIDE AND OUTSIDE SHOULDERS.
2. MAINTAIN TWO EASTBOUND LANES ON THE INSIDE AND OUTSIDE SHOULDER TO THE SOUTHBOUND AND NORTHBOUND I-55 RAMP, AT WHICH POINT AN AUXILIARY LANE IS ADDED IN LANE 2.
3. TRAFFIC CONTINUES ON THE INSIDE AND OUTSIDE SHOULDER EAST OF THE I-55 RAMP TO APPROXIMATELY STATION 324+92, AT WHICH POINT TRAFFIC IS OPENED BACK TO THE EXISTING CONFIGURATION.

CONSTRUCTION

I-80 EB OVER FRONTAGE ROAD (SN 099-0042)

1. SEAL DECK AND PARAPET
2. BRIDGE DECK PATCHING

I-80 EB OVER I-55 (SN 099-0044)

1. PARTIAL BRIDGE DECK PATCHING
2. SEAL DECK AND PARAPETS
3. DECK JOINT REPAIRS (SILICONE SEAL)

I-80 EB OVER ROCK RUN CREEK (SN 099-0046)

1. BRIDGE DECK PATCHING
2. DECK JOINT REPAIRS (SILICONE SEAL)
3. APPROACH SLAB PATCHING
4. STRUCTURAL REPAIR OF CONCRETE SUBSTRUCTURE
5. PLUG EXISTING 6" DIA. DECK DRAINS
6. CONCRETE SEALER
7. CLEAN AND PAINT EXPOSED REBAR

STAGE 3

INSTALL TEMPORARY SIGNING, STRIPING, AND OTHER TRAFFIC CONTROL DEVICES NECESSARY FOR THE STAGE 3 TRAFFIC CONFIGURATION, INCLUDING THE NECESSARY MODIFICATIONS TO THE EXISTING GROUND MOUNTED AND OVERHEAD SIGNS.

TRAFFIC

1. PRIOR TO THE EASTBOUND I-80 STRUCTURE OVER FRONTAGE ROAD AT STATION 269+37, SHIFT THE TWO EASTBOUND LANES TO THE OUTSIDE SHOULDER AND LANE 2.
2. MAINTAIN TWO EASTBOUND LANES ON THE OUTSIDE SHOULDER AND LANE 2 TO THE SOUTHBOUND AND NORTHBOUND I-55 RAMP, AT WHICH POINT AN AUXILIARY LANE IS ADDED ON THE SHOULDER OF THE BRIDGE STRUCTURE.
3. TRAFFIC CONTINUES ON LANE 2 AND THE OUTSIDE SHOULDER EAST OF THE I-55 RAMP TO APPROXIMATELY STATION 322+06, AT WHICH POINT TRAFFIC IS OPENED BACK TO THE EXISTING CONFIGURATION.

CONSTRUCTION

I-80 EB OVER FRONTAGE ROAD (SN 099-0042)

1. SEAL DECK AND PARAPET
2. BRIDGE DECK PATCHING

I-80 EB OVER I-55 (SN 099-0044)

1. PARTIAL BRIDGE DECK PATCHING
2. SEAL DECK AND PARAPETS
3. DECK JOINT REPAIRS (SILICONE SEAL)



I-80 EB OVER ROCK RUN CREEK (SN 099-0046)

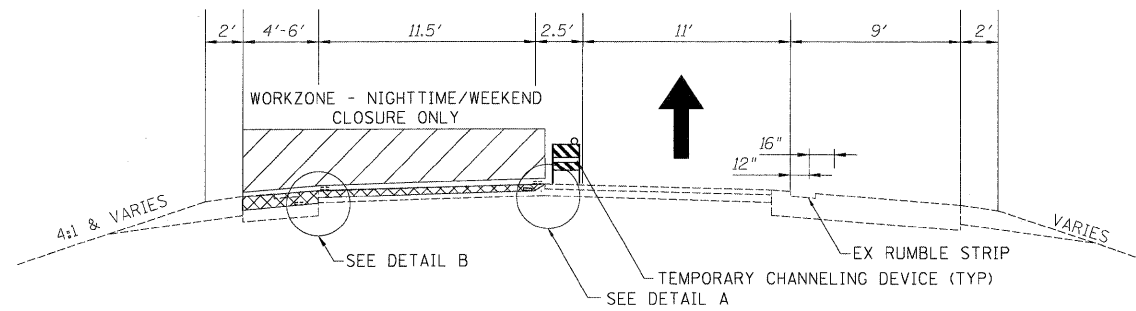
1. BRIDGE DECK PATCHING
2. DECK JOINT REPAIRS (SILICONE SEAL)
3. APPROACH SLAB PATCHING
4. STRUCTURAL REPAIR OF CONCRETE SUBSTRUCTURE
5. PLUG EXISTING 6" DIA. DECK DRAINS
6. CONCRETE SEALER
7. CLEAN AND PAINT EXPOSED REBAR

MOT GENERAL NOTES

1. NO SHOULDER OR LANE CLOSURES WILL BE ALLOWED ON THE WEEKENDS OF THE MAJOR RACES AT THE CHICAGOLAND SPEEDWAY / ROUTE 66 RACEWAY IN JOLIET. THIS INCLUDES THE NHRA NATIONALS (JULY 7-10, 2011) AND NASCAR RACE WEEKENDS (JUNE 4-5 AND SEPTEMBER 16-18, 2011).
2. ANY TEMPORARY OR PERMANENT PAVEMENT MARKING REMOVED UNDER THIS CONTRACT SHALL BE REPLACED PRIOR TO RE-OPENING THE LANES TO TRAFFIC.
3. SMA SURFACE SHALL BE PLACED ONLY WHEN IT IS FEASIBLE TO INSTALL PERMANENT INLAID PAVEMENT MARKINGS DURING PLACEMENT AND JOINT LOCATIONS SHOWN IN THE TYPICAL SECTIONS. LANE LINES TO BE GROOVED-IN OR USE OF BLACK TAPE TO COVER PREFORMED LANE LINES CONFLICTING WITH THE STAGING WILL NOT BE APPROVED.
4. ALL TRAFFIC CONTROL, DEVICES, BARRICADES, DRUMS, LANE CLOSURES, TEMPORARY PAVEMENT MARKINGS, ETC. ALONG THE CROSS ROADS WITHIN THE CONTRACT LIMITS, UNLESS OTHERWISE SPECIFIED IN THE TRAFFIC CONTROL PLANS, SHALL NOT BE PAID FOR SEPARATELY, BUT SHALL BE INCLUDED IN THE LUMP SUM FOR "TRAFFIC CONTROL AND PROTECTION (EXPRESSWAY)". THE CONTRACTOR SHALL USE THE APPROPRIATE IDOT OR DISTRICT ONE STANDARD AND OBTAIN APPROVAL FROM THE ENGINEER.
5. WHEN MILLED PAVEMENT IS OPEN TO TRAFFIC, THE MAXIMUM GRADE DIFFERENTIAL BETWEEN TRAVEL LANES SHALL NOT EXCEED 1-1/2". WHEN NEWLY PLACED ASPHALT IS OPENED TO TRAFFIC, THE MAXIMUM LIFT DIFFERENCE BETWEEN THE TRAVEL LANES SHALL NOT EXCEED 2". GRADE DIFFERENTIALS BETWEEN TRAVEL LANES UP TO A MAXIMUM OF 4" ARE ALLOWED WITH INSTALLATION OF A TEMPORARY WEDGE OR MILLED SLOPED EDGE AT A MINIMUM GRADE OF 1:3 (V:H). INSTALLATION AND REMOVAL OF THE TEMPORARY WEDGES AND/OR TAPERED MILLED EDGES SHALL NOT BE PAID FOR SEPARATELY, BUT SHALL BE INCLUDED IN THE COST OF THE CONTRACT.
6. REPAIRS TO BE PERFORMED ON THE HOUBOLT ROAD AND JOLIET JUNCTION TRAIL STRUCTURES WILL BE PERFORMED UNDER TEMPORARY NIGHTTIME AND/OR WEEKEND CLOSURES. SEE STRUCTURAL PLANS FOR MORE INFORMATION.
7. SHOULDER RUMBLE STRIPS SHALL BE INSTALLED AFTER THE PERMANENT MAINTENANCE OF TRAFFIC HAS BEEN REMOVED. THIS WORK SHALL BE UNDER A CLOSURE ACCORDING TO IDOT DISTRICT ONE STANDARD DRAWING TC-17.
8. THE CONTRACTOR IS ADVISED THAT THE EXISTING MAINLINE SURFACE ASPHALT CONTAINS SLAG AND ALL LIMITS AND RESTRICTIONS FOR USE OF THIS MATERIAL AS RAP SHALL APPLY.
9. EPOXY PAVEMENT MARKINGS WILL BE USED ON ALL MILLED SURFACES AS TEMPORARY PAVEMENT MARKINGS. THIS WORK WILL BE PAID AS WET REFLECTIVE TEMPORARY TAPE. SEE CONTRACT SPECIAL PROVISIONS.
10. PRESTAGE WORK WILL BE PERFORMED UNDER TEMPORARY NIGHTTIME LANE CLOSURES UTILIZING IDOT HIGHWAY STANDARD 701400-05 AND 701401-06 FOR SINGLE LANE CLOSURES FOLLOWING ALL APPLICABLE CONTRACT REQUIREMENTS. THESE CLOSURES WILL BE INCLUDED IN THE LUMP SUM ITEM "TRAFFIC CONTROL AND PROTECTION, (EXPRESSWAYS)"

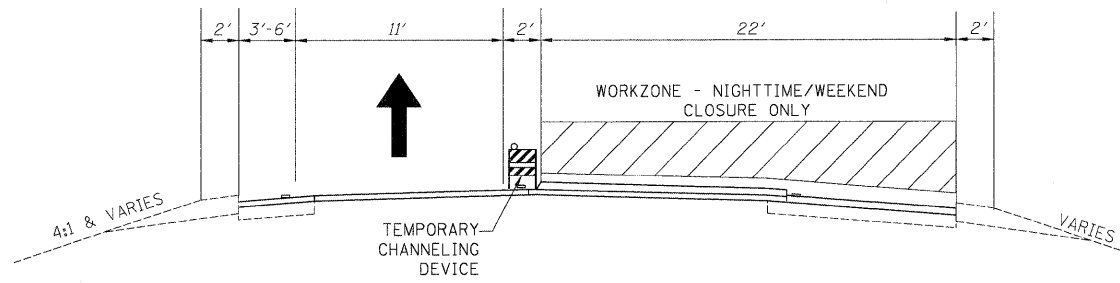
*** 5A IF WEDGE IS INSTALLED FOLLOWING BINDER REMOVAL, PROPOSED BINDER MUST BE PLACED WITHIN 72 HOURS.**

| | | | | | | | | | | | | | | |
|-------------------------|--|---|---|--|--|---|--|--|-------------|--------------------|-------------------------|----------------------|---|----|
| DESIGNED - LLS/JG | REVISION  - 03/04/11 ADDENDUM B |  | STATE OF ILLINOIS DEPARTMENT OF TRANSPORTATION | | | MAINTENANCE OF TRAFFIC GENERAL NOTES | | | F.A.I. RTE. | SECTION | COUNTY | TOTAL SHEETS | SHEET NO. | |
| USER NAME = dornkovich | DRAWN - PMS/DC | | | | | | | | REVISION - | 80 | 99-1-RS-4 | WILL | 116 | 32 |
| PLOT SCALE = 1/8"=1' | CHECKED - JAL | | | | | | | | REVISION - | CONTRACT NO. 60M63 | | | | |
| PLOT DATE = 20-JAN-2011 | DATE - 01/21/2011 | | | | | | | | REVISION - | SCALE: N.T.S. | SHEET NO. 1 OF 1 SHEETS | STA. N/A TO STA. N/A | FED. ROAD DIST. NO. 1 ILLINOIS FED. AID PROJECT | |



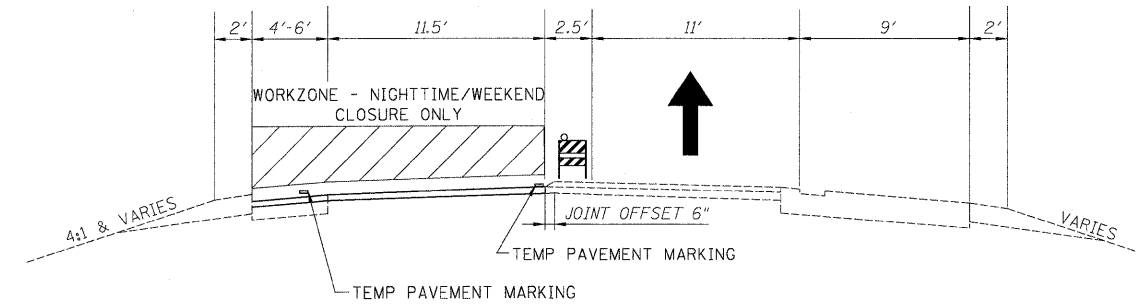
OPERATION 1

- GRIND 4" INSIDE SHOULDER
- GRIND 2" SMA SURFACE LANE 1
- TEMPORARY CHANNELING DEVICE REQUIRED ALONG OUTSIDE SHOULDER (SEE NOTE 6)



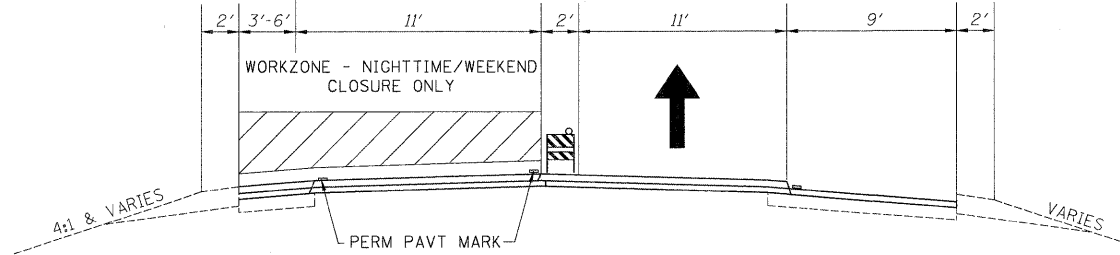
OPERATION 5

- PLACE 2" SMA SURFACE LANE 2



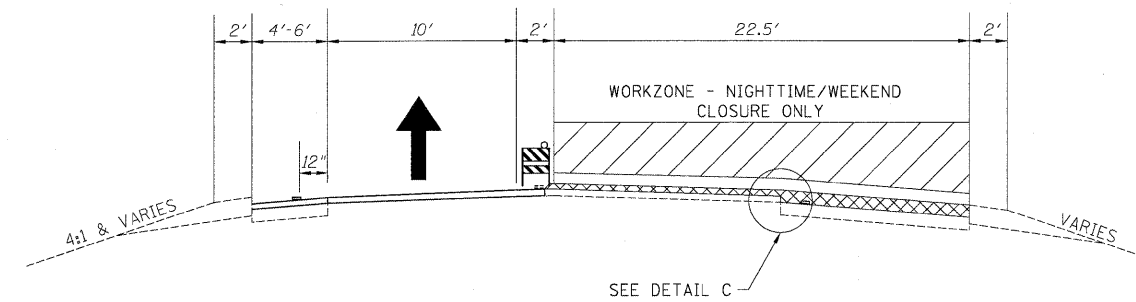
OPERATION 2

- GRIND 2" BINDER ASPHALT AND PLACE 2" SMA BINDER LANE 1 (SAME CLOSURE)
- PLACE INSIDE SHOULDER BINDER



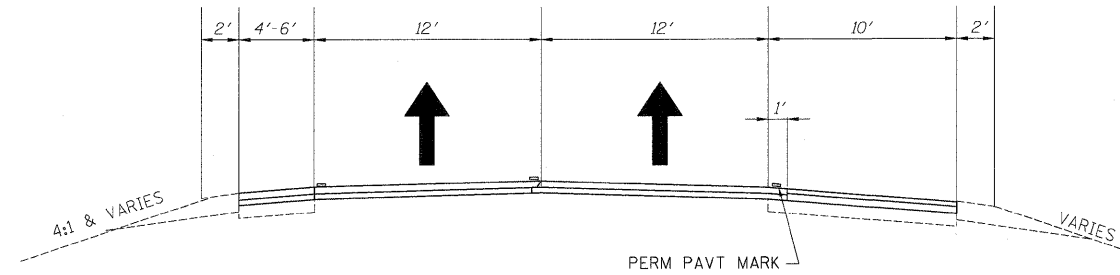
OPERATION 6

- PLACE 2" SMA SURFACE LANE 2



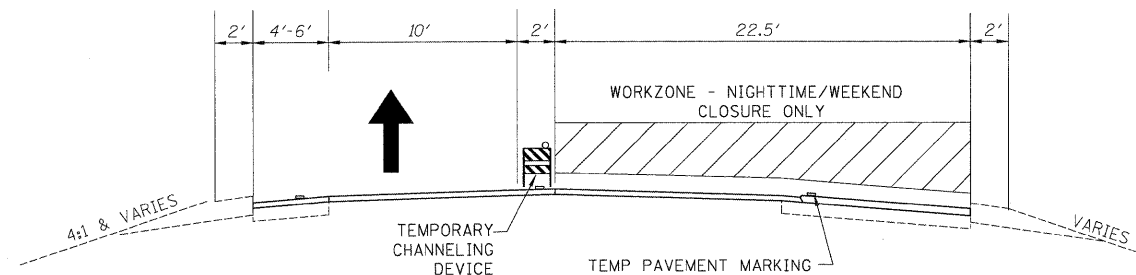
OPERATION 3

- GRIND 4" OUTSIDE SHOULDER
- GRIND 2" SURFACE ASPHALT LANE 2



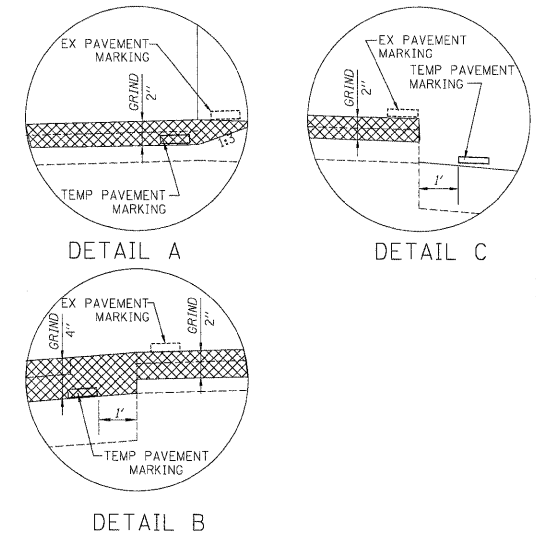
OPERATION 7

- PLACE OUTSIDE SHOULDER SURFACE
- INSTALL RUMBLE STRIP



OPERATION 4

- GRIND 2" BINDER ASPHALT AND PLACE 2" SMA BINDER LANE 2 (SAME CLOSURE)
- PLACE OUTSIDE SHOULDER BINDER



NOTES:

- ALL OPERATIONS TO BE PERFORMED UNDER TEMPORARY NIGHTTIME/WEEKEND CLOSURES. DAYTIME TRAFFIC WILL UTILIZE EXISTING TRAFFIC CONFIGURATION.
- IDOT STANDARD 701401-06 SHALL BE FOLLOWED FOR ALL TEMPORARY LANE CLOSURE
- SURFACE REMOVAL WILL BE PAID AS HOT-MIX ASPHALT SURFACE REMOVAL, 4" (44000165) REGARDLESS OF THE NUMBER OF PASSES.
- FOR HMA MIX TABLE, SEE GENERAL NOTES.
- MOT TYPICAL SECTIONS HAVE WESTBOUND SHOWN. EASTBOUND IS SIMILAR.
- BARRICADES ARE REQUIRED ALONG ALL SHOULDERS FOR DROPOFFS GREATER THAN 3", AND LOW SHOULDER SIGNS (2 MILE SPACING) ARE REQUIRED FOR ALL SHOULDER DROPOFFS GREATER THAN 1 INCH.
- PAVEMENT PATCHING TO BE DONE PRIOR TO THE TRAFFIC OPERATIONS SHOWN.
- THE CONTRACTOR IS ADVISED THAT THE EXISTING MAINLINE SURFACE ASPHALT CONTAINS SLAG AND ALL LIMITS AND RESTRICTIONS FOR USE OF THIS MATERIAL AS RAP SHALL APPLY.
- EPOXY PAVEMENT MARKINGS WILL BE USED ON ALL MILLED SURFACES AS TEMPORARY PAVEMENT MARKINGS. THIS WORK WILL BE PAID AS WET REFLECTIVE TEMPORARY TAPE. SEE CONTRACT SPECIAL PROVISIONS.
- ANY MAINLINE BINDER REMOVED WILL BE REPLACED BEFORE RE-OPENING THE ROAD TO TRAFFIC.
- ANY PAVEMENT MARKING (TEMPORARY OR PERMANENT) REMOVED UNDER THIS CONTRACT SHALL BE REPLACED BY THIS CONTRACT PRIOR TO RE-OPENING THE LANES TO TRAFFIC.

12 ALL MAINTENANCE OF TRAFFIC - TYPICAL SECTIONS FOR TEMPORARY LANE CLOSURES ARE SUGGESTED SEQUENCES OF OPERATIONS.

| | | | | | | | | | | | | | | |
|-----------------------|-------------------|-------------------------------|--|---|--|--|--|-------------|------|-------------|---|--------|--------------|-----------|
| USER NAME = default | DESIGNED - RR | REVISED - 03/04/11 ADDENDUM B | | STATE OF ILLINOIS DEPARTMENT OF TRANSPORTATION | | | MAINTENANCE OF TRAFFIC - TYPICAL SECTIONS FOR TEMPORARY LANE CLOSURES 1-80 MAINLINE | | | F.A.I. RTE. | SECTION | COUNTY | TOTAL SHEETS | SHEET NO. |
| PLOT SCALE = #SCALE# | DRAWN - JK | REVISED - | | | | | 80 | 99-1-RS-4 | WILL | 116 | 33 | | | |
| PLOT DATE = 1/28/2011 | CHECKED - RR | REVISED - | | SCALE: N/A | | | SHEET NO. 1 | OF 1 SHEETS | STA. | TO STA. | FED. ROAD DIST. NO. [ILLINOIS] FED. AID PROJECT | | | |
| | DATE - 01/21/2011 | REVISED - | | | | | | | | | CONTRACT NO. 60M63 | | | |