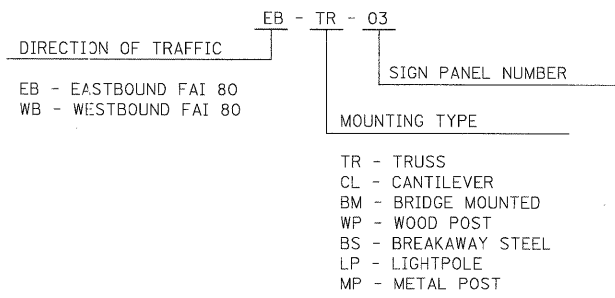
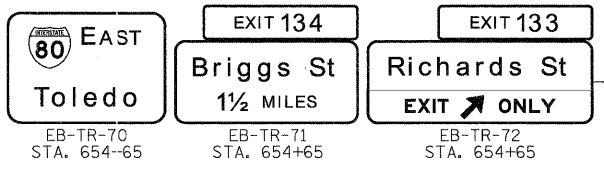
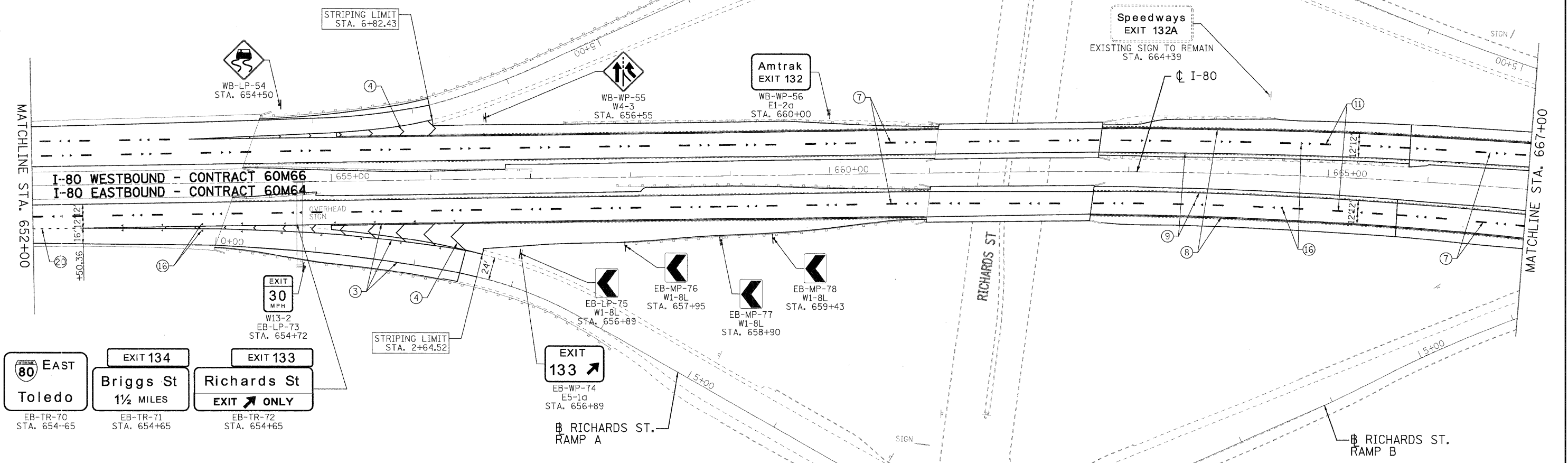


**GUIDE SIGN SEQUENCE  
NUMBERING CODE**



**NOTES**

- SEE IDOT DISTRICT 1 DETAILS FOR TC-12 'MULTI-LANE FREEWAY PAVEMENT MARKING DETAILS' FOR PLACEMENT AND TYPE OF RAISED REFLECTIVE PAVEMENT MARKERS.
- FOR PROPOSED PAVEMENT MARKINGS IN THE PCC SECTIONS, USE POLYUREA PAVEMENT MARKINGS ACCORDING TO DISTRICT 1 DETAIL TC-12.
- REFER TO ROADWAY PLANS FOR LIMITS OF RESURFACING.
- ALL EASTBOUND WORK IS IN CONTRACT 60M64 AND ALL WESTBOUND WORK IS IN CONTRACT 60M66.



- LEGEND:**
- |  |   |  |
|--|---|--|
| ① THERMOPLASTIC PAVEMENT MARKING - LINE 4" (WHITE EDGE LINE)                                 | ⑪ POLYUREA PAVEMENT MARKING TYPE I - LINE 5" (WHITE 10' DASH, 30' SKIP - P.C.C. PVT. ONLY)                      | ⑳ PREFORMED PLASTIC PAVEMENT MARKING, TYPE B - INLAID - LINE 8" (WHITE 3' DASH, 9" SKIP) |
| ② THERMOPLASTIC PAVEMENT MARKING - LINE 4" (YELLOW EDGE LINE)                                | ⑫ POLYUREA PAVEMENT MARKING TYPE I - LINE 8" (WHITE EDGE LINE - P.C.C. PVT. ONLY)                               |  |
| ③ THERMOPLASTIC PAVEMENT MARKING - LINE 8" (WHITE EDGE LINE)                                 | ⑬ POLYUREA PAVEMENT MARKING TYPE I - LINE 12" (WHITE GORE CHEVRONS SPACED @ 30' CENTERS - P.C.C. PVT. ONLY)     |  |
| ④ THERMOPLASTIC PAVEMENT MARKING - LINE 12" (WHITE GORE CHEVRONS SPACED @ 30' CENTERS)       | ⑭ POLYUREA PAVEMENT MARKING TYPE I - LINE 12" (WHITE SHOULDER DIAGONALS SPACED @ 500' CENTERS (40' AT BRIDGES)) |  |
| ⑤ THERMOPLASTIC PAVEMENT MARKING - LINE 12" (WHITE SHOULDER DIAGONALS SPACED @ 500' CENTERS) | ⑮ RAISED REFLECTIVE PAVEMENT MARKER (1-WAY YELLOW / OPAQUE)   |  |
| ⑥ THERMOPLASTIC PAVEMENT MARKING - LINE 4" (WHITE 2' DASH, 6' SKIP)                          | ⑯ RAISED REFLECTIVE PAVEMENT MARKER (1-WAY CRYSTAL / OPAQUE)  |  |
| ⑦ PREFORMED PLASTIC PAVEMENT MARKING, TYPE B - INLAID - LINE 5" (WHITE 10' DASH, 30' SKIP)   | ⑰ RAISED REFLECTIVE PAVEMENT MARKER (BRIDGE)  |  |
| ⑧ POLYUREA PAVEMENT MARKING TYPE I - LINE 4" (WHITE EDGE LINE - P.C.C. PVT. ONLY)            | ⑱ THERMOPLASTIC PAVEMENT MARKING - LETTERS AND SYMBOLS  |  |
| ⑨ POLYUREA PAVEMENT MARKING TYPE I - LINE 4" (YELLOW EDGE LINE - P.C.C. PVT. ONLY)           | ⑲ POLYUREA PAVEMENT MARKING TYPE I - LETTERS AND SYMBOLS  |  |
| ⑩ POLYUREA PAVEMENT MARKING TYPE I - LINE 4" (WHITE 2' DASH, 6' SKIP - P.C.C. PVT. ONLY)     | ⑳ PREFORMED PLASTIC PAVEMENT MARKING, TYPE B - INLAID - LINE 8" (WHITE 3' DASH, 9" SKIP)                        |  |

|                                |                  |           |                                 |   |  |                          |                                  |                         |             |                  |              |  |  |
|--------------------------------|------------------|-----------|---------------------------------|---|--|--------------------------|----------------------------------|-------------------------|-------------|------------------|--------------|--|--|
| USER NAME = tkoppen@day.lis.le | DESIGNED - EJB   | REVISED - | <b>HBP</b><br>Illinois Partners | <b>STATE OF ILLINOIS<br/>DEPARTMENT OF TRANSPORTATION</b> | <b>PAVEMENT MARKING &amp; SIGNING PLAN<br/>I-80 MAINLINE</b> |                          | F.A.I. RTE. 80                   | SECTION 99 (2 & 3) RS-3 | COUNTY WILL | TOTAL SHEETS 200 | SHEET NO. 67 |  |  |
| PLOT CONFIG = PDFLarge.plt     | DRAWN - EJB      | REVISED - |                                 |   | SCALE: 1"=50'  | SHEET NO. 8 OF 18 SHEETS | STA. 652+00.00 TO STA. 667+00.00 | CONTRACT NO. 60M64      |             |                  |              |  |  |
| PLOT SCALE = 1:50              | CHECKED - DTH    | REVISED - |                                 |   | FED. ROAD DIST. NO. 1 ILLINOIS FED. AID PROJECT              |                          |                                  |                         |             |                  |              |  |  |
| PLOT DATE = 1/21/2011          | DATE - 1/21/2011 | REVISED - |                                 |   |  |                          |                                  |                         |             |                  |              |  |  |