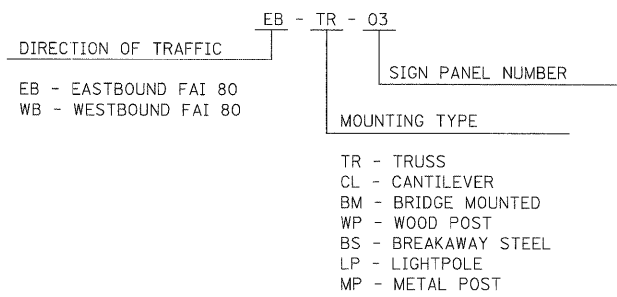
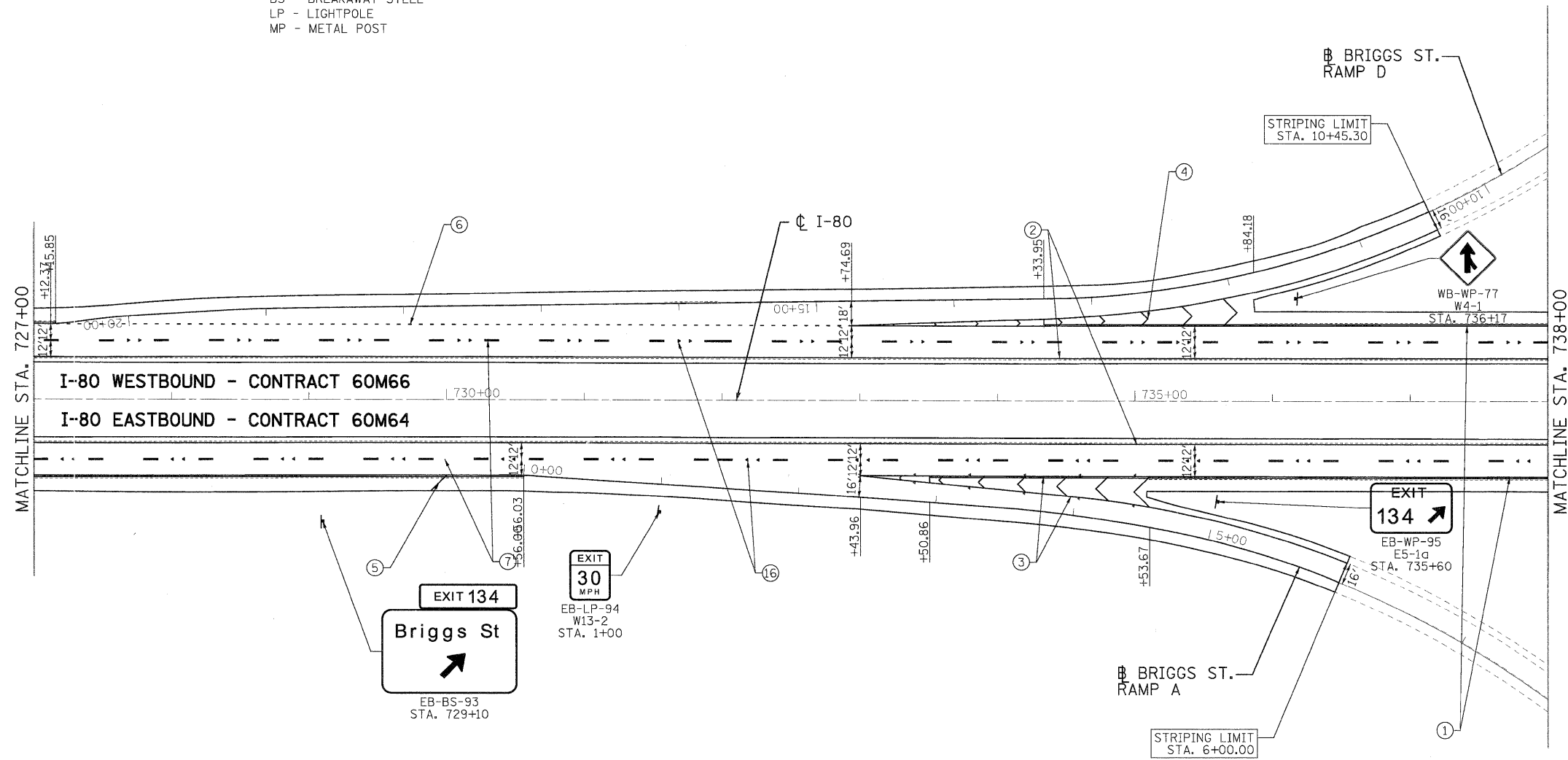
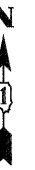


**GUIDE SIGN SEQUENCE
NUMBERING CODE**



NOTES

- SEE IDOT DISTRICT 1 DETAILS FOR TC-12 'MULTI-LANE FREEWAY PAVEMENT MARKING DETAILS' FOR PLACEMENT AND TYPE OF RAISED REFLECTIVE PAVEMENT MARKERS.
- FOR PROPOSED PAVEMENT MARKINGS IN THE PCC SECTIONS, USE POLYUREA PAVEMENT MARKINGS ACCORDING TO DISTRICT 1 DETAIL TC-12.
- REFER TO ROADWAY PLANS FOR LIMITS OF RESURFACING.
- ALL EASTBOUND WORK IS IN CONTRACT 60M64 AND ALL WESTBOUND WORK IS IN CONTRACT 60M66.



LEGEND:

- | | | | |
|--|---|---|--|
| ① THERMOPLASTIC PAVEMENT MARKING - LINE 4" (WHITE EDGE LINE) | ⑪ POLYUREA PAVEMENT MARKING TYPE I - LINE 5" (WHITE 10' DASH, 30' SKIP - P.C.C. PVT. ONLY) | ⑫ POLYUREA PAVEMENT MARKING TYPE I - LINE 8" (WHITE EDGE LINE - P.C.C. PVT. ONLY) | ⑲ POLYUREA PAVEMENT MARKING TYPE 1 - LETTERS AND SYMBOLS |
| ② THERMOPLASTIC PAVEMENT MARKING - LINE 4" (YELLOW EDGE LINE) | ⑬ POLYUREA PAVEMENT MARKING TYPE I - LINE 12" (WHITE GORE CHEVRONS SPACED @ 30' CENTERS - P.C.C. PVT. ONLY) | ⑭ POLYUREA PAVEMENT MARKING TYPE I - LINE 12" (WHITE SHOULDER DIAGONALS SPACED @ 500' CENTERS (40' AT BRIDGES)) | ⑳ PREFORMED PLASTIC PAVEMENT MARKING, TYPE B - INLAID - LINE 8" (WHITE 3' DASH, 9" SKIP) |
| ③ THERMOPLASTIC PAVEMENT MARKING - LINE 8" (WHITE EDGE LINE) | ⑮ RAISED REFLECTIVE PAVEMENT MARKER (1-WAY YELLOW / OPAQUE) | ⑯ RAISED REFLECTIVE PAVEMENT MARKER (BRIDGE) | |
| ④ THERMOPLASTIC PAVEMENT MARKING - LINE 12" (WHITE GORE CHEVRONS SPACED @ 30' CENTERS) | ⑰ RAISED REFLECTIVE PAVEMENT MARKER (1-WAY CRYSTAL / OPAQUE) | | |
| ⑤ THERMOPLASTIC PAVEMENT MARKING - LINE 12" (WHITE SHOULDER DIAGONALS SPACED @ 500' CENTERS) | ⑱ THERMOPLASTIC PAVEMENT MARKING - LETTERS AND SYMBOLS | | |
| ⑥ THERMOPLASTIC PAVEMENT MARKING - LINE 4" (WHITE 2' DASH, 6' SKIP) | ⑳ PREFORMED PLASTIC PAVEMENT MARKING, TYPE B - INLAID - LINE 8" (WHITE 3' DASH, 9" SKIP) | | |
| ⑦ PREFORMED PLASTIC PAVEMENT MARKING, TYPE B - INLAID - LINE 5" (WHITE 10' DASH, 30' SKIP) | | | |
| ⑧ POLYUREA PAVEMENT MARKING TYPE I - LINE 4" (WHITE EDGE LINE - P.C.C. PVT. ONLY) | | | |
| ⑨ POLYUREA PAVEMENT MARKING TYPE I - LINE 4" (YELLOW EDGE LINE - P.C.C. PVT. ONLY) | | | |
| ⑩ POLYUREA PAVEMENT MARKING TYPE I - LINE 4" (WHITE 2' DASH, 6' SKIP - P.C.C. PVT. ONLY) | | | |

USER NAME = tkoppen@rdwy.lisle	DESIGNED - EJB	REVISED -
PLOT CONFIG = PD=Large.plt	DRAWN - EJB	REVISED -
PLOT SCALE = 1:150	CHECKED - DTH	REVISED -
PLOT DATE = 1/23/2011	DATE - 1/21/2011	REVISED -



**STATE OF ILLINOIS
DEPARTMENT OF TRANSPORTATION**

PAVEMENT MARKING & SIGNING PLAN	
I-80 MAINLINE	
SCALE: 1"=50'	SHEET NO. 11 OF 18 SHEETS
STA. 727+00.00 TO STA. 738+00.00	

F.A.I. RTE.	SECTION	COUNTY	TOTAL SHEETS	SHEET NO.
80	99 (2 & 3) RS-3	WILL	200	70
CONTRACT NO. 60M64				
FED. ROAD DIST. NO. 1 ILLINOIS FED. AID PROJECT				