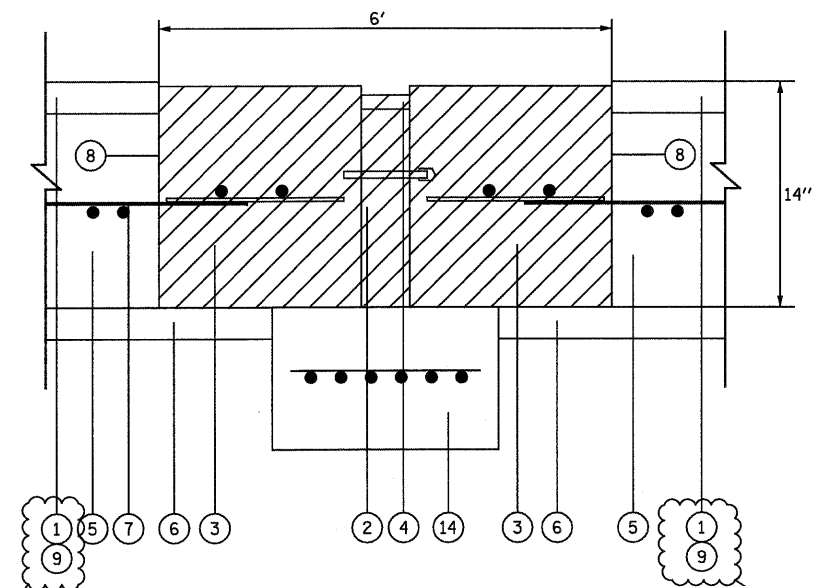


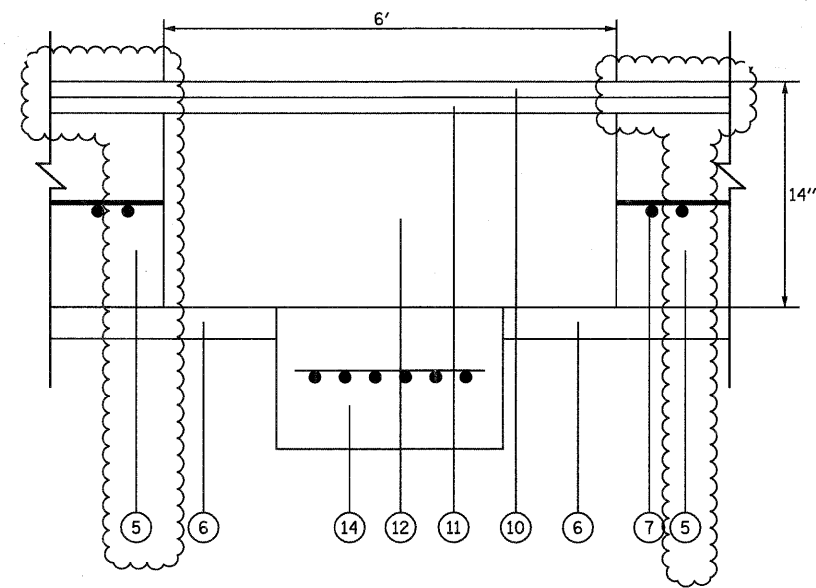
PLAN VIEW OF EXISTING PAVEMENT RELIEF JOINT

- LEGEND:**
- ① EXISTING SMA OVERLAY, 4"
 - ② EXISTING PREFORMED JOINT FILLER REMOVAL
 - ③ EXISTING PORTLAND CEMENT CONCRETE REMOVAL
 - ④ EXISTING HOT POURED JOINT SEALER REMOVAL
 - ⑤ EXISTING P.C.C. PAVEMENT, 10"
 - ⑥ EXISTING SUB-BASE
 - ⑦ EXISTING C.R.C. PAVEMENT REINFORCEMENT
 - ⑧ SAW CUT (FULL DEPTH)
 - ⑨ PROPOSED HOT-MIX ASPHALT REMOVAL, 4"
 - ⑩ POLYMERIZED HOT-MIX ASPHALT SURFACE COURSE STONE MATRIX ASPHALT, N80, 2"
 - ⑪ POLYMERIZED HOT-MIX ASPHALT BINDER COURSE STONE MATRIX ASPHALT, N80, 2"
 - ⑫ CLASS D PATCHES, TYPE III, 10 INCH
 - ⑬ WHEEL SAW CUT
 - ⑭ SLEEPER SLAB (NOT TO BE REMOVED OR DAMAGED)

NOTE:
REMOVAL AND DISPOSAL OF EXISTING PAVEMENT RELIEF JOINTS, AS SHOWN ON THE PLANS, WILL NOT BE PAID FOR SEPARATELY, BUT WILL BE INCLUDED IN THE COST OF THE CLASS D PATCH REPLACEMENT AT THE SAME LOCATION



SECTION A-A
EXISTING PAVEMENT RELIEF JOINT TO BE REMOVED (TYPICAL)



SECTION A-A
PROPOSED PAVEMENT RELIEF JOINT
TO BE REPLACED BY CLASS D PATCH (TYPICAL)

USER NAME = eboalter(Rdwy_L1s1e)	DESIGNED - CPK	REVISED - 2/15/11
PLOT CONFIG = PDF(I-80_TopoGrey_Small).pl	DRAWN - JAC	REVISED -
PLOT SCALE = 1:25	CHECKED - DTH	REVISED -
PLOT DATE = 2/15/2011	DATE - 1/21/2011	REVISED -



STATE OF ILLINOIS
DEPARTMENT OF TRANSPORTATION

PAVEMENT RELIEF JOINT REMOVAL AND REPLACEMENT DETAIL
I-80 MAINLINE

SCALE: NTS SHEET NO. 1 OF 3 SHEETS STA. TO STA.

F.A. I RTE.	SECTION	COUNTY	TOTAL SHEETS	SHEET NO.
80	99 (2 & 3) RS-3	WILL	200	88
FED. ROAD DIST. NO. 1 ILLINOIS FED. AID PROJECT			CONTRACT NO. 60M64	