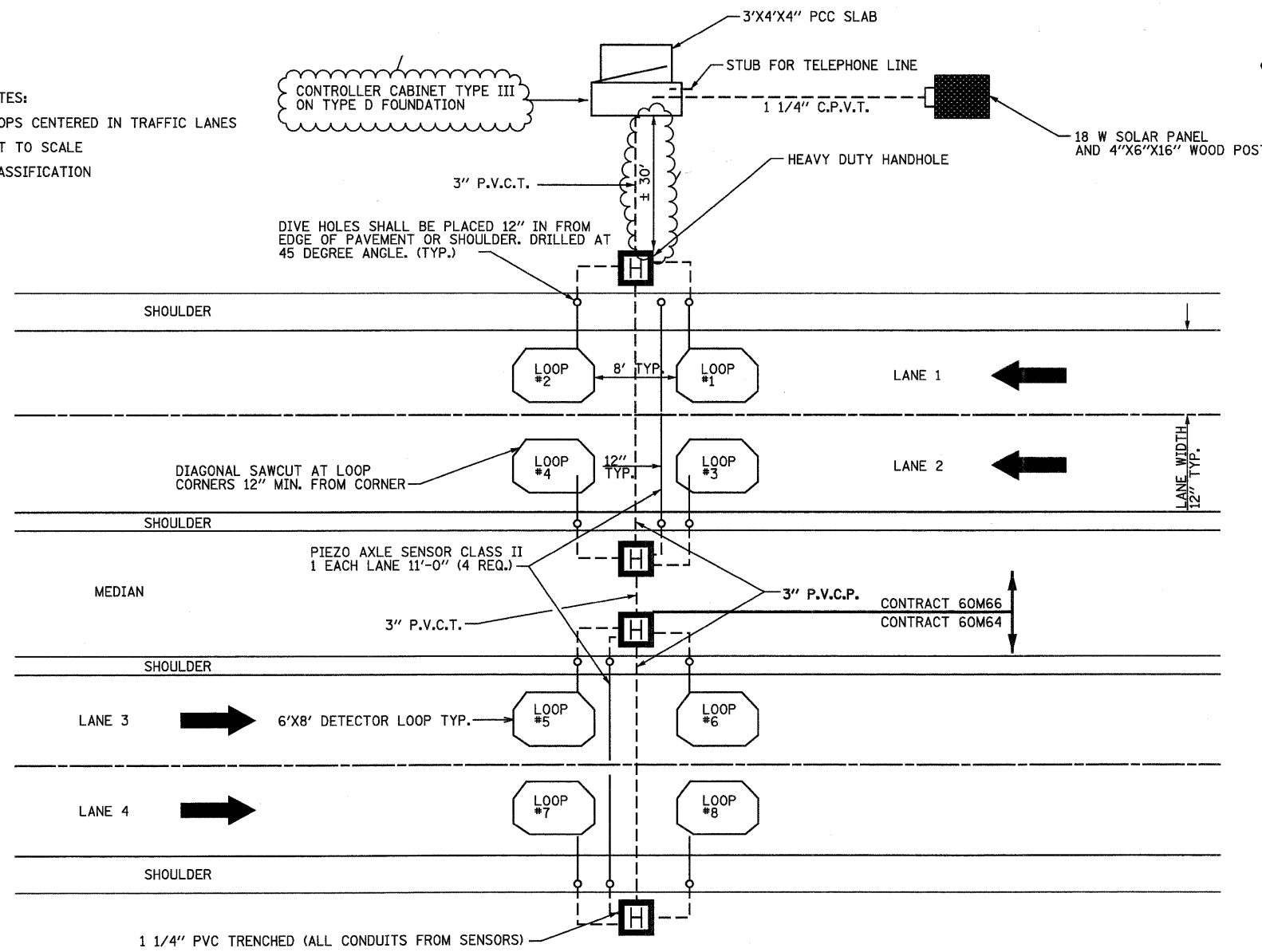
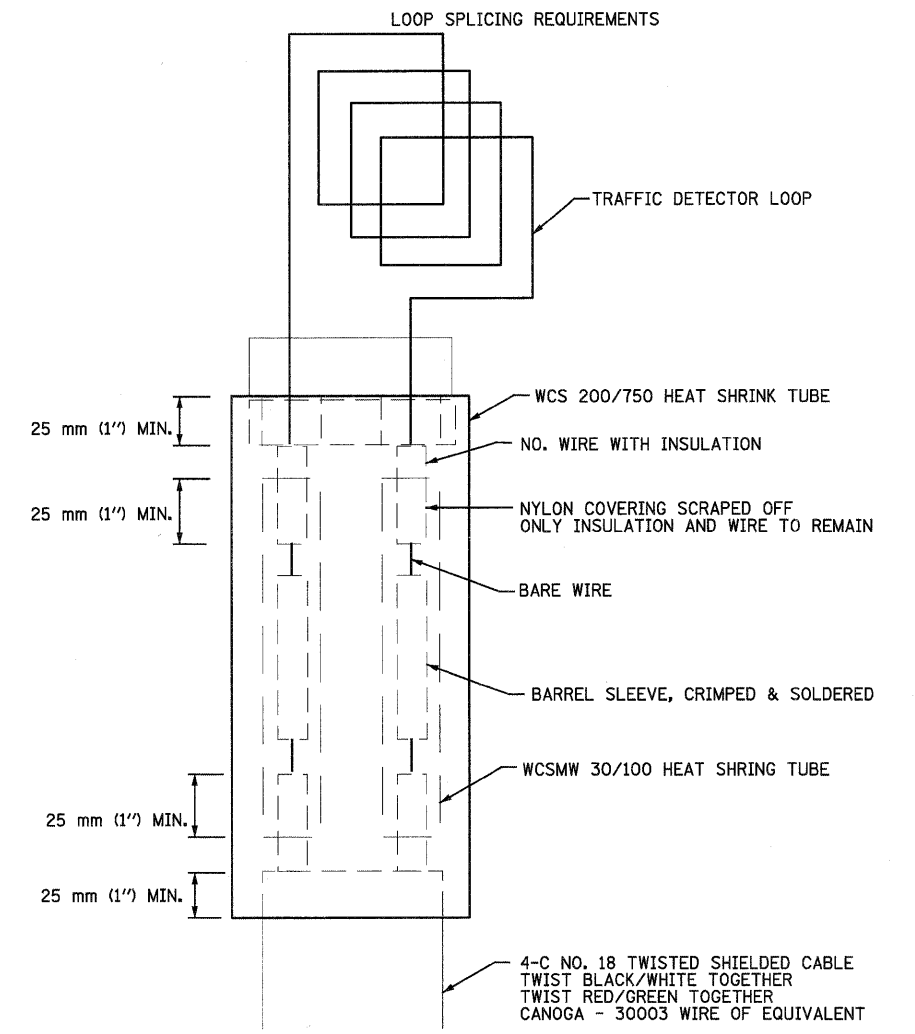


NOTES:
 LOOPS CENTERED IN TRAFFIC LANES
 NOT TO SCALE
 CLASSIFICATION



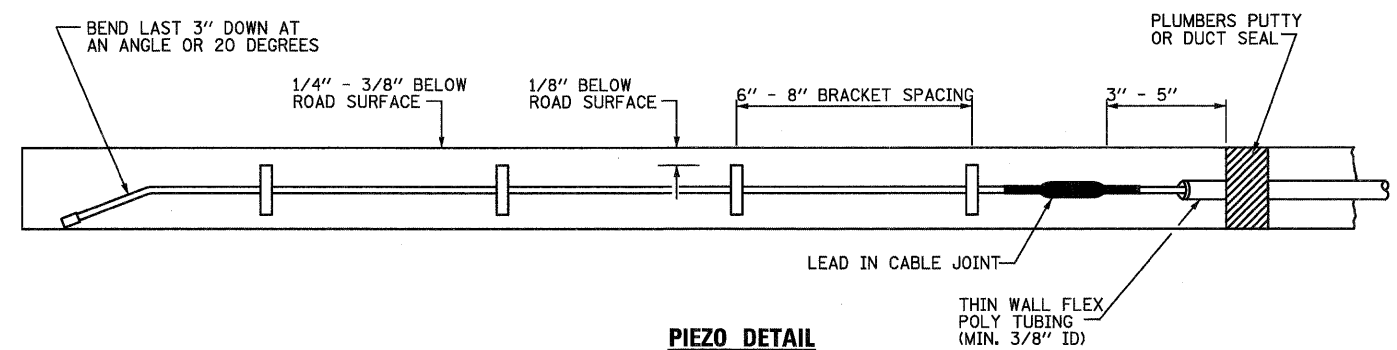
LAYOUT FOR ATR 1840
 925' EAST OF CHERRY HILL ROAD



MINIMUM 25 mm (1") HEAT SHRINK TUBE OVERLAP ON WIRE.
 PVC & SHIELDED CABLE TO FORM WATER TIGHT SEAL

NOTE: NOT TO SCALE

LOOP SPLICING REQUIREMENTS



PIEZO DETAIL

USER NAME = okersten(Lisle_R)	DESIGNED - CPK	REVISED - 02/15/11
PLOT CONFIG = PDF(Greg_Small).plt	DRAWN - JAC	REVISED -
PLOT SCALE = 1:100	CHECKED - DTH	REVISED -
PLOT DATE = 2/10/2011	DATE - 1/21/2011	REVISED -



STATE OF ILLINOIS
 DEPARTMENT OF TRANSPORTATION

TRAFFIC SENSOR DETAIL
 NEAR CHERRY HILL ROAD

SCALE: NTS SHEET NO. 3 OF 3 SHEETS STA. TO STA.

F.A.I. RTE.	SECTION	COUNTY	TOTAL SHEETS	SHEET NO.
80	99 (2 & 3) RS-3	WILL	200	90
CONTRACT NO. 60M64				
FED. ROAD DIST. NO. 1 ILLINOIS FED. AID PROJECT				