

Existing Structures:

Dual bridges, S/N 099-0050 carrying I-80 Eastbound and S/N 099-0051 carrying I-80 Westbound over Midland Avenue were originally constructed in 1964 as part of F.A.I. 80 Project, I-80-4(20)132. Section 99-2HB-4. Both bridge decks were repaired and overlaid in 1992. Deck expansion joint at west abutment of SN 099-0050 was partially repaired in 2001. Superstructures consist of three continuous span wide flange structure supported on concrete abutments and piers.

Stage construction shall be utilized to maintain traffic during construction.

No salvage.

INDEX OF SHEETS

- S1. General Plan, Notes, and Total Bill of Material
- S2. Construction Staging
- S3. Deck and Expansion Joint Repairs
- S4. Abutment Repair
- S5. Permanent Protective Shield
- S6. Temporary Concrete Barrier for Stage Construction

SCOPE OF WORK

- 1. Install protective shield.
- 2. Full depth and partial depth deck slab repair.
- 3. Seal concrete bridge deck.
- 4. Remove and replace preformed joint seals with silicone joint sealer.
- 5. Repair structural concrete at abutments.

DESIGN SPECIFICATIONS

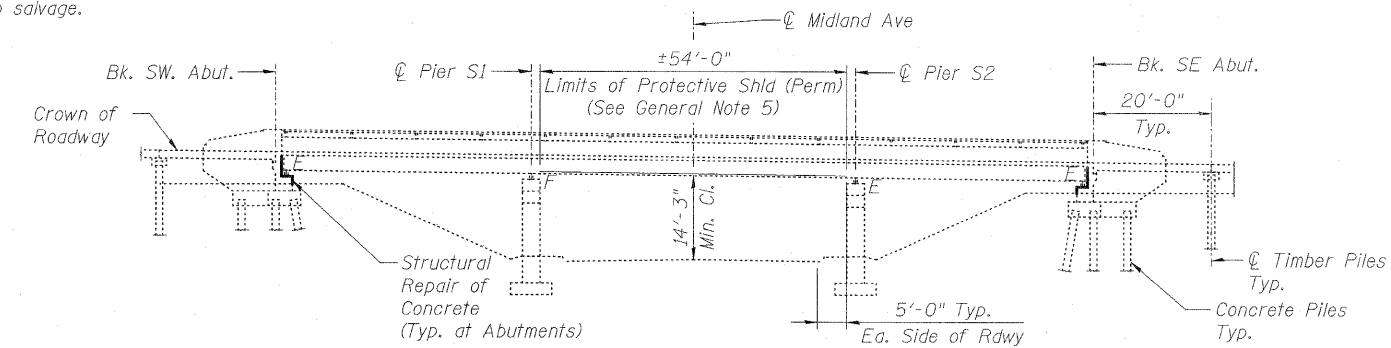
2002 AASHTO Standard Specifications for Highway Bridges, 17th Edition

DESIGN STRESSES

FIELD UNITS:
 f'c = 3,500 psi
 fy = 60,000 psi (Reinforcement)

GENERAL NOTES:

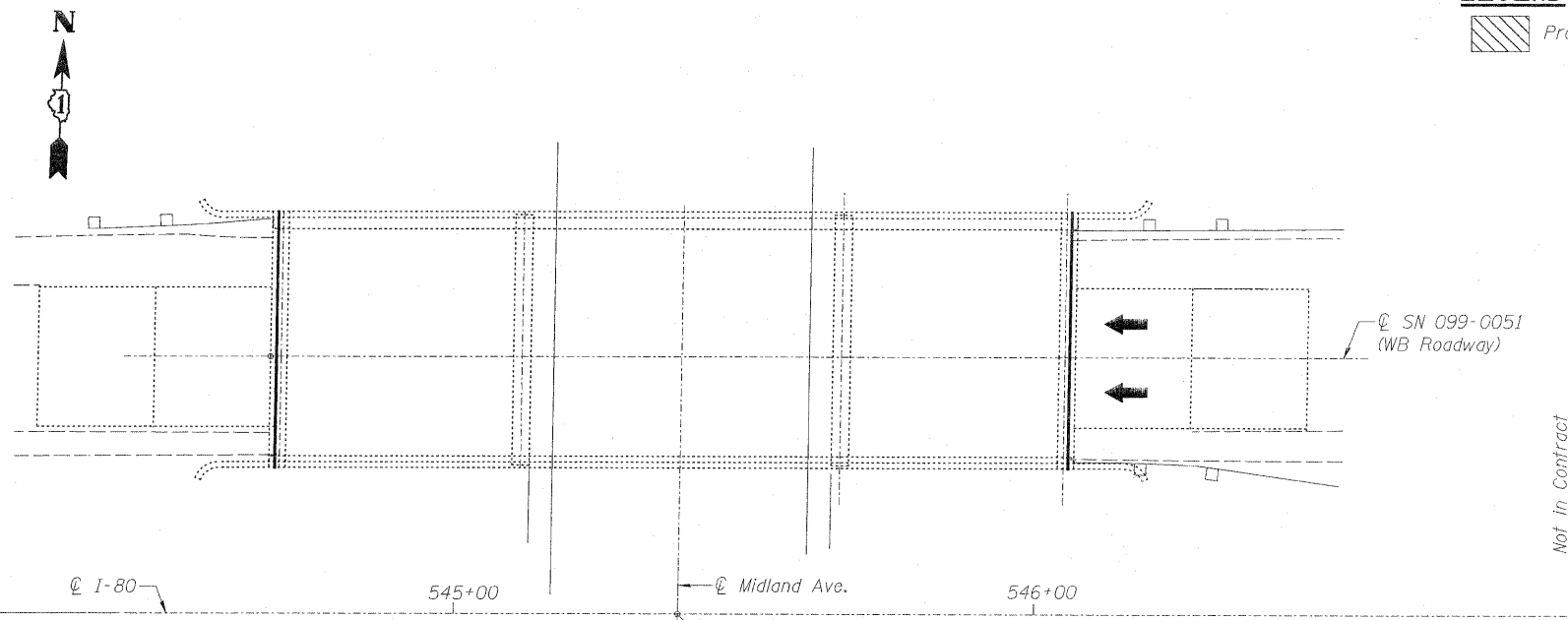
- 1. Reinforcement bars shall conform to the requirements of ASTM A 706 Grade 60. See Special Provisions.
- 2. Concrete Sealer shall be applied to the entire top surface of bridge deck and inside vertical face of curbs. All work shall be performed in accordance with the provisions of Section 587 of the Standard Specification. When directed by the Engineer, all surfaces to be coated shall be thoroughly cleaned by power washing or other appropriate means prior to the application of Concrete Sealer. Cleaning is included with the cost of "Concrete Sealer". Existing pavement markings shall be temporarily covered prior to application of the deck surface treatment, to prevent the material from being applied to the markings. The temporary covering shall be removed after application of the deck surface treatment and prior to opening to traffic. Cost included with "Concrete Sealer".
- 3. Plan dimensions and details relative to existing structure have been taken from existing plans and are subject to nominal construction variations. Contractor should verify dimensions and make necessary approved adjustments prior to starting construction. Such variations shall not be cause for additional compensation for a change in scope of work, however, the Contractor will be paid for actual quantity furnished and approved by Engineer at unit price bid for the work.
- 4. Areas of proposed deck repairs are estimated. Actual type, location and dimension of deck repairs are to be determined by the Engineer during construction.
- 5. Protective shield shall be installed prior to start of Deck Slab Repair work.



ELEVATION

LEGEND

Protective Shield (Permanent)



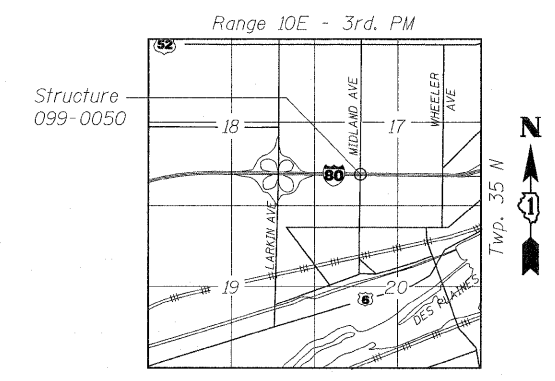
PLAN

TOTAL BILL OF MATERIAL

ITEM	UNIT	SUPER	SUB	TOTAL
Concrete Sealer	Sq. Ft.	5,698	-	5,698
Protective Shield (Permanent)	Sq. Yd.	240	-	240
Structural Repair of Concrete (Depth < 5")	Sq. Ft.	-	63	63
Structural Repair of Concrete (Depth > 5")	Sq. Ft.	-	98	98
Deck Slab Repair (Full Depth, Type I)	Sq. Yd.	5	-	5
Deck Slab Repair (Full Depth, Type II)	Sq. Yd.	5	-	5
Deck Slab Repair (Partial)	Sq. Yd.	27	-	27
Silicone Joint Sealer, 1 3/4"	Foot	45	-	45
Silicone Joint Sealer, 2 1/2"	Foot	45	-	45



SIGNED:
 DATE: 02/08/2011
 EXP: 11/30/2012
 SHEETS: S1 THRU S6



LOCATION SKETCH

USER NAME = ayargicoglu(Rdwy.L1s1e) PLOT CONFIG = PDF(I-80_TopoGray_Large).pl PLOT SCALE = 1:16 PLOT DATE = 2/8/2011	DESIGNED - A.Y./L.C. DRAWN - L.C./A.Y. CHECKED - R.L.D. DATE - 01/21/2011	REVISED - REVISED - REVISED - REVISED -		STATE OF ILLINOIS DEPARTMENT OF TRANSPORTATION	GENERAL PLAN, NOTES, AND TOTAL BILL OF MATERIAL EASTBOUND I-80 OVER MIDLAND AVENUE SN 099-0050	F.A.I. RTE. 80 SECTION 99 (2&3) RS-3 COUNTY WILL TOTAL SHEETS 200 SHEET NO. 91 CONTRACT NO. 60M64
SCALE: SHEET S1 OF S6 STA. TO STA.					FED. ROAD DIST. NO. 1 ILLINOIS FED. AID PROJECT	

G:\DOT\21050.005 (I-80 Phase III)\Drawings\CADD Sheets\Bridges\P&E\Midland\EB\099-0050-D160M64-GPE-Midland.dgn