

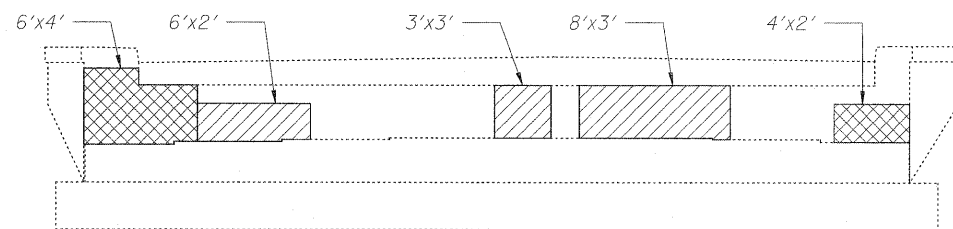
SOUTHWEST ABUTMENT
Looking West

BILL OF MATERIAL

ITEM	UNIT	TOTAL
Structural Repair of Concrete (Depth < 5")	Sq. Ft.	63
Structural Repair of Concrete (Depth > 5")	Sq. Ft.	98

LEGEND:

- Structural Repair of Concrete (Depth < 5")
- Structural Repair of Concrete (Depth > 5")



SOUTHEAST ABUTMENT
Looking East

USER NAME = ayargicog\wRdey.Lisa	DESIGNED - A.Y./L.C.	REVISED -
PLOT CONFIG = PDF(I-80_TopoGrey_Large).pl	DRAWN - L.C./A.Y.	REVISED -
PLOT SCALE = 1/5	CHECKED - A.Y./R.L.D.	REVISED -
PLOT DATE = 2/8/2011	DATE - 01/21/2011	REVISED -



STATE OF ILLINOIS
DEPARTMENT OF TRANSPORTATION

ABUTMENT REPAIR
EASTBOUND I-80 OVER MIDLAND AVENUE
SN 099-0050

SCALE: SHEET S4 OF S6 STA. TO STA.

F.A.I. RTE.	SECTION	COUNTY	TOTAL SHEETS	SHEET NO.
80	99 (2&3) RS-3	WILL	200	94
FED. ROAD DIST. NO. 1 ILLINOIS FED. AID PROJECT			CONTRACT NO. 60M64	