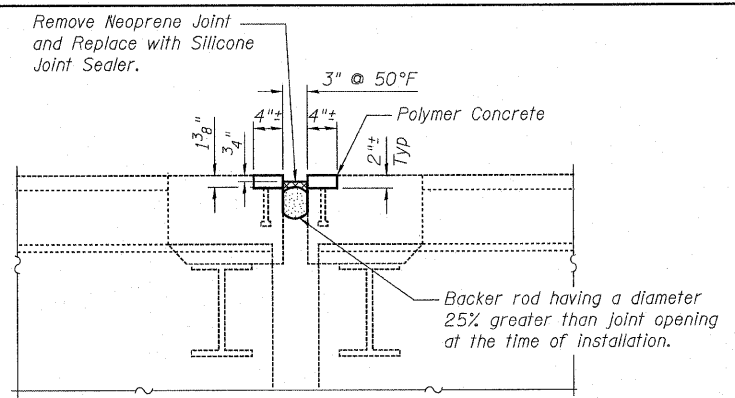
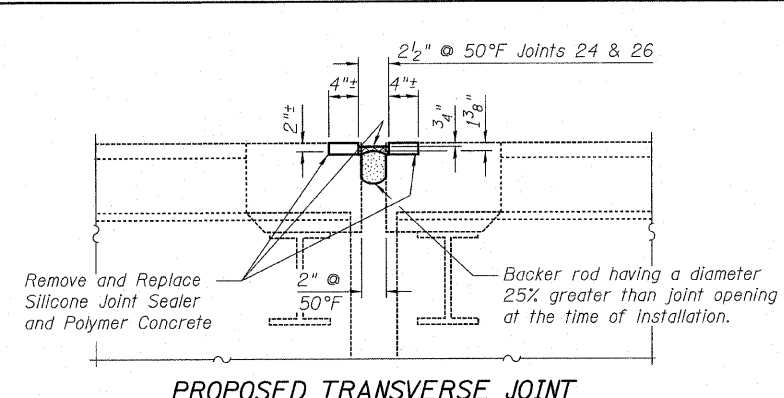


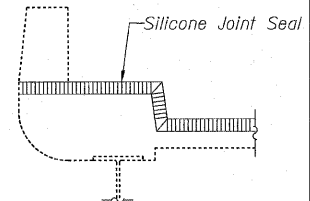
* East side of joint 2 only.
PROPOSED TRANSVERSE JOINT
 Joints (2) & (28)
 Backer rod having a diameter 25% greater than joint opening at the time of installation.



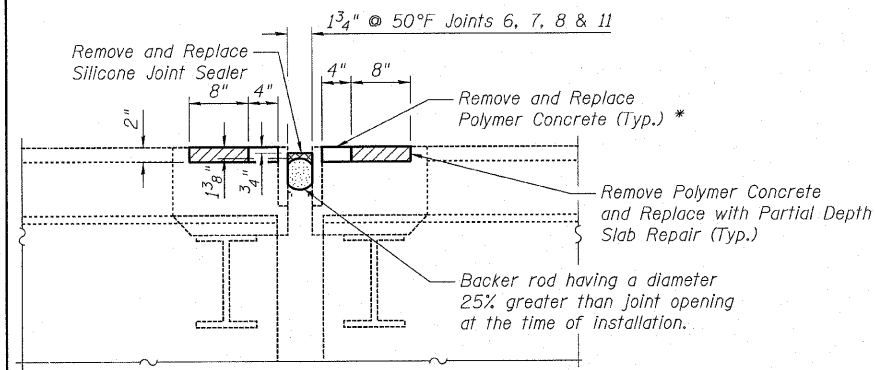
PROPOSED TRANSVERSE JOINT
 Joint (5)
 Backer rod having a diameter 25% greater than joint opening at the time of installation.



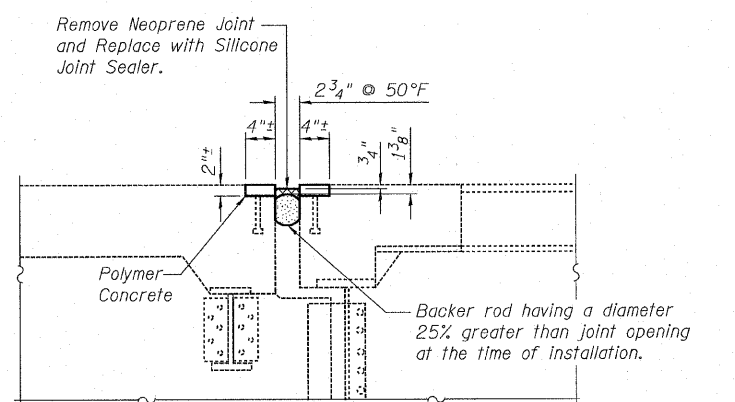
PROPOSED TRANSVERSE JOINT
 Joints (24) & (26)
 Backer rod having a diameter 25% greater than joint opening at the time of installation.



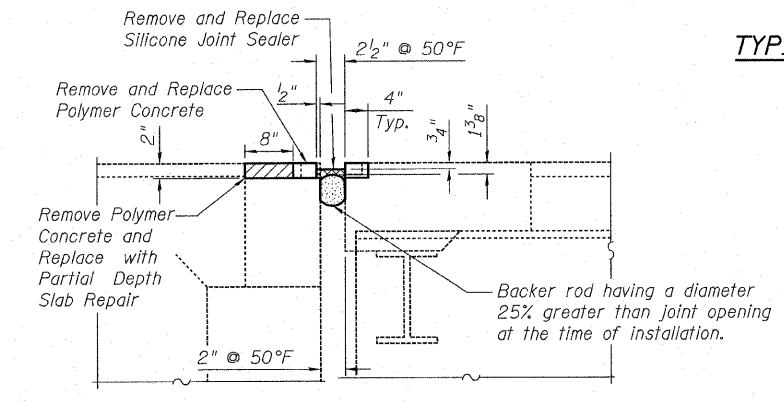
TYPICAL END OF SEAL TREATMENT
 (Silicone Joint Seal)
 Approach Spans Shown.
 Truss Spans Similar.



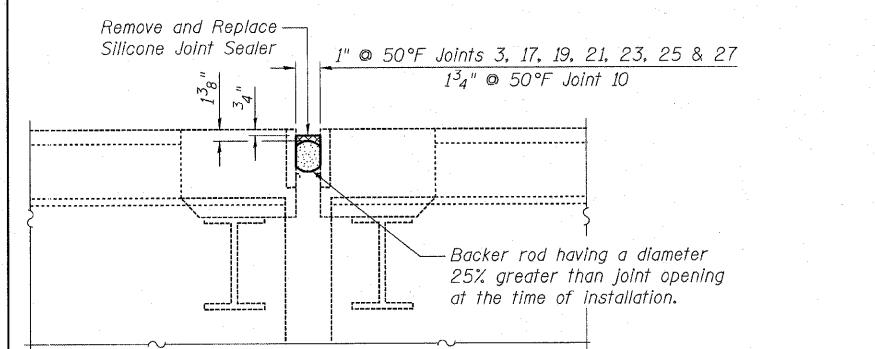
* Joints 7, 8 & 11: Both sides of joint, inside lane only
 Joint 6: Both sides, entire joint length
PROPOSED TRANSVERSE JOINT
 Joints (6), (7), (8) & (11)
 Backer rod having a diameter 25% greater than joint opening at the time of installation.



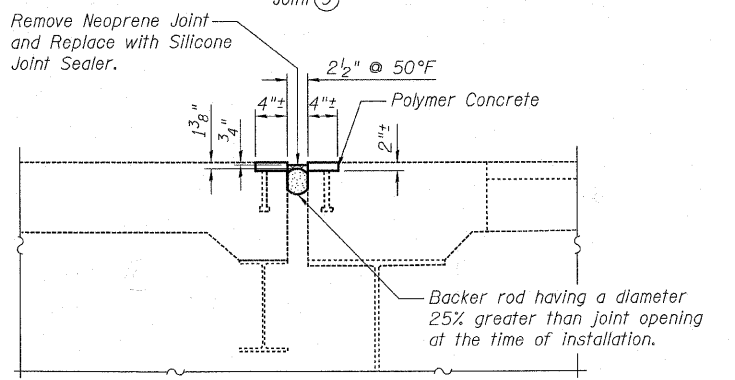
PROPOSED TRANSVERSE JOINT
 Joint (9)
 Backer rod having a diameter 25% greater than joint opening at the time of installation.



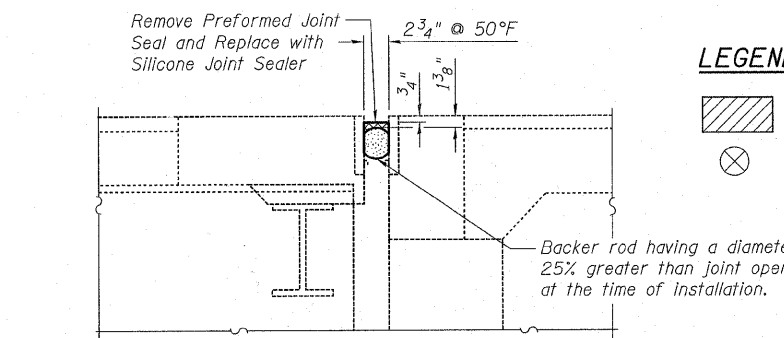
PROPOSED TRANSVERSE JOINT - WEST ABUTMENT
 Joint (1)
 Backer rod having a diameter 25% greater than joint opening at the time of installation.



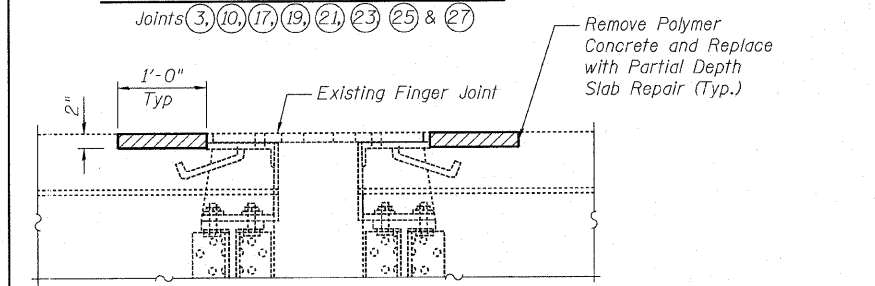
PROPOSED TRANSVERSE JOINT
 Joints (3), (10), (17), (19), (21), (23), (25) & (27)
 Backer rod having a diameter 25% greater than joint opening at the time of installation.



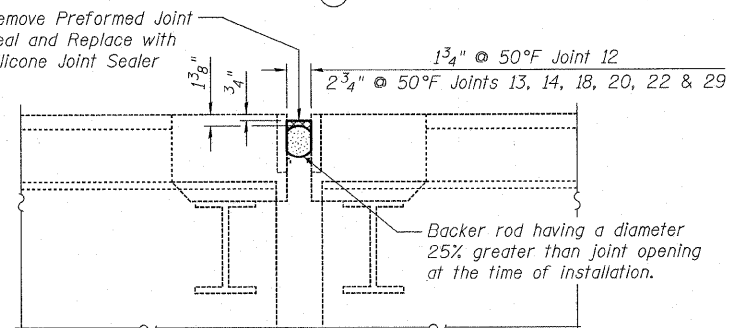
PROPOSED TRANSVERSE JOINT
 Joint (15)
 Backer rod having a diameter 25% greater than joint opening at the time of installation.



PROPOSED TRANSVERSE JOINT - EAST ABUTMENT
 Joint (30)
 Backer rod having a diameter 25% greater than joint opening at the time of installation.



PROPOSED TRANSVERSE JOINT
 Joints (4) & (16)
 Backer rod having a diameter 25% greater than joint opening at the time of installation.



PROPOSED TRANSVERSE JOINT
 Joints (12), (13), (14), (18), (20), (22) & (29)
 Backer rod having a diameter 25% greater than joint opening at the time of installation.

- LEGEND:**
- Deck Slab Repair (Partial)
 - Joint repair type designation

BILL OF MATERIAL

ITEM	UNIT	TOTAL
Silicone Joint Sealer, 1"	Foot	353
Silicone Joint Sealer, 1.75"	Foot	289
Silicone Joint Sealer, 2.5"	Foot	325
Silicone Joint Sealer, 2.75"	Foot	388
Silicone Joint Sealer, 3"	Foot	50
Polymer Concrete	Cu. Ft.	50
Deck Slab Repair (Partial)	Sq. Yd.	41

- NOTES:**
1. Removal of existing joint material shall be included in the cost of Silicone Joint Sealer.
 2. Provide 1/4" chamfer at top corner of polymer concrete adjacent to opening.
 3. Removal of existing concrete and polymer concrete is included in the cost of Polymer Concrete.
 4. For location of joints, see Sheets S-1 and S-2 of 35.
 5. Limit of removal and replacement of polymer concrete is curb to curb.

DESIGNED - RCW	REVISED -
DRAWN - RCW	REVISED -
CHECKED - PCA	REVISED -
DATE - 2/8/2011	REVISED -



STATE OF ILLINOIS
DEPARTMENT OF TRANSPORTATION

DECK JOINT REPAIRS
EASTBOUND FAI-80 OVER DES PLAINES RIVER
STRUCTURE NO. 099-0056

F.A.I. RTE. 80	SECTION 99 (2&3) RS-3	COUNTY WILL	TOTAL SHEETS 200	SHEET NO. 114
FED. ROAD DIST. NO. 1 ILLINOIS FED. AID PROJECT			CONTRACT NO. 60M64	