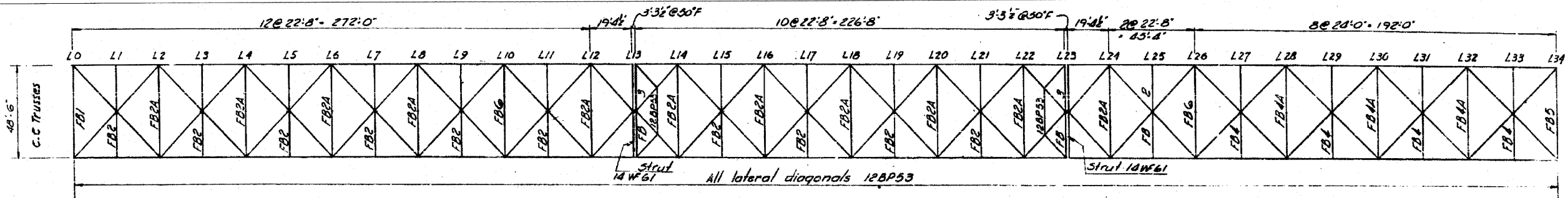


**LEGEND:**

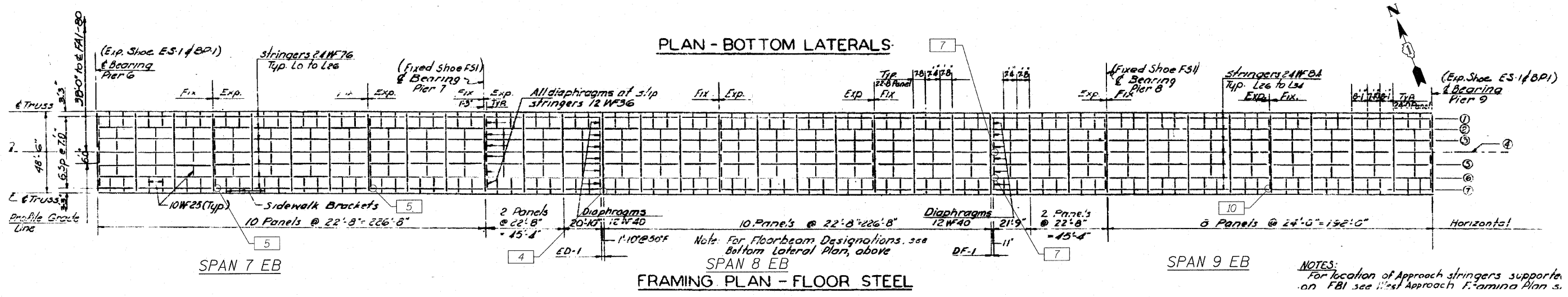
1 Detail 1

**NOTES:**

1. Work this sheet with Sheets S-8, S-10 to S-14 of 35.
2. Drawing shows plan of floor beams, stringers, diaphragms, lateral diagonals, struts and sidewalk framing. All labels and numbering of the framing members are according to the 1960 design plans.
3. For schedule of repairs, see Sheet S-14 of 35.



**PLAN - BOTTOM LATERALS**



**FRAMING PLAN - FLOOR STEEL**

**NOTES:**  
For location of Approach stringers supports on FBI see West Approach Framing Plan s.

DESIGNED - MEA	REVISED -
DRAWN - LK	REVISED -
CHECKED - MRI	REVISED -
DATE - 2/8/2011	REVISED -



STATE OF ILLINOIS  
DEPARTMENT OF TRANSPORTATION

FRAMING PLAN SPANS 4-9  
EASTBOUND FAI-80 OVER DES PLAINES RIVER  
STRUCTURE NO. 099-0056  
SHEET NO. 5-9 OF 35 SHEETS

F.A.I. RTE.	SECTION	COUNTY	TOTAL SHEETS	SHEET NO.
80	99 (2&3) RS-3	WILL	200	116
CONTRACT NO. 60M64				
FED. ROAD DIST. NO. 1 ILLINOIS FED. AID PROJECT				

FILE NAME = c:\addrib\p\1\muller\p\groot\_lakes\dms34575\8990056-60M64-009-FP2.dgn