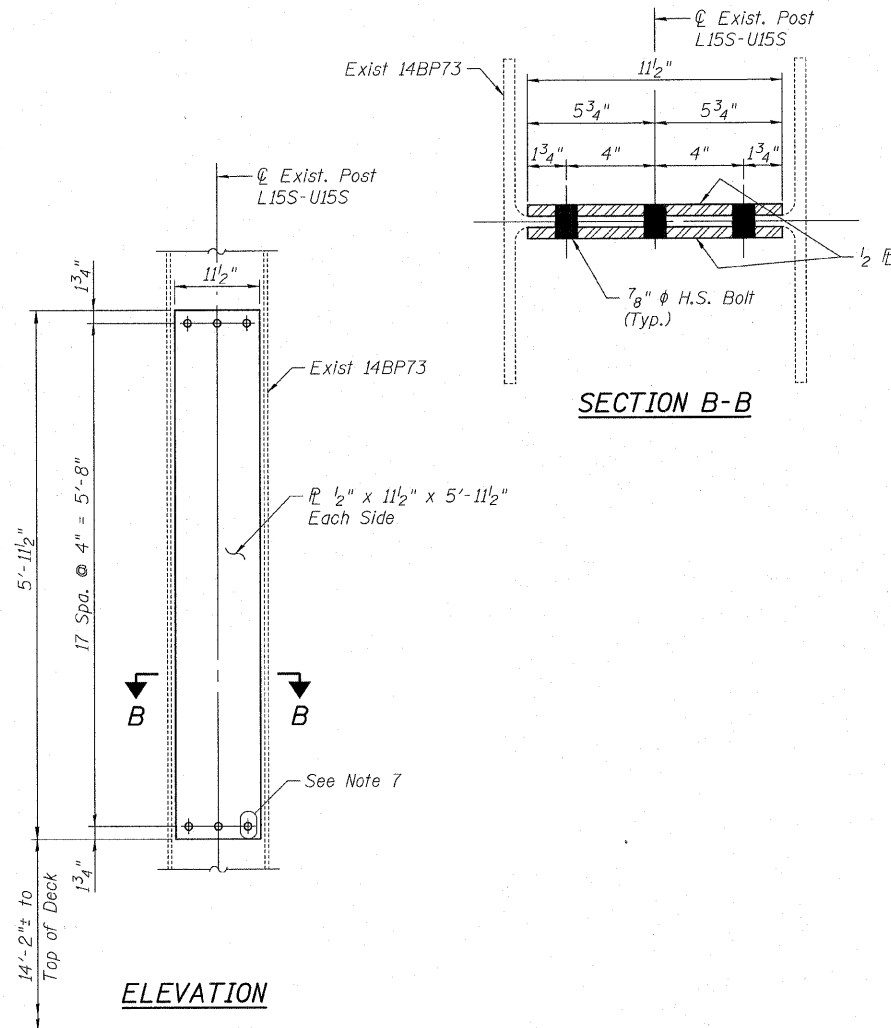


Location #	A	B	C	D
L5N-U5N	20	6'-8"	6'-11 1/2"	15'-2"±
L7S-U7S	11	3'-8"	3'-11 1/2"	9'-3"±
L14N-U14N	12	4'-0"	4'-3 1/2"	7'-2"±
L18N-U18N	27	9'-0"	9'-3 1/2"	12'-3"±
L20N-U20N	7	2'-4"	2'-7 1/2"	9'-2"±

* N - Denotes North Truss Leaf
S - Denotes South Truss Leaf

DETAIL 9
TRUSS HANGER/POST WEB REPAIR



DETAIL 9
TRUSS HANGER/POST WEB REPAIR

NOTES:

1. See Sheets S-8 to S-14 of 35 for locations of proposed repair details and notes.
2. All structural steel plates and shapes used in proposed repair details shall be AASHTO M270 Gr 36 (ASTM A36).
3. All fasteners shall be 7/8" dia. AASHTO M164 (ASTM A325) high strength bolts in 15/16" dia. standard size holes.
4. Contact surfaces at bolted parts shall have Class B coating as specified in AASHTO Standard Specifications for Highway Bridges.
5. Field drilling of existing members is required. The drilling cost shall be included with "Structural Steel Repair".
6. The repair plate and angle lengths shown are anticipated based on the latest field notes. Longer repair plates, angles may be required based upon field conditions.
7. 15/16" φ standard size holes in the truss member are to be field drilled using the repair plates and shapes as a template unless otherwise noted.

DESIGNED - MEA	REVISED -
DRAWN - LK	REVISED -
CHECKED - MRI	REVISED -
DATE - 2/8/2011	REVISED -



STATE OF ILLINOIS
DEPARTMENT OF TRANSPORTATION

STEEL REPAIR DETAILS 2
EASTBOUND FAI-80 OVER DES PLAINES RIVER
STRUCTURE NO. 099-0056
SHEET NO. 5-16 OF 35 SHEETS

F.A.I. RTE. 80	SECTION 99 (2&3) RS-3	COUNTY WILL	TOTAL SHEETS 200	SHEET NO. 123
FED. ROAD DIST. NO. 1 ILLINOIS FED. AID PROJECT			CONTRACT NO. 60M64	