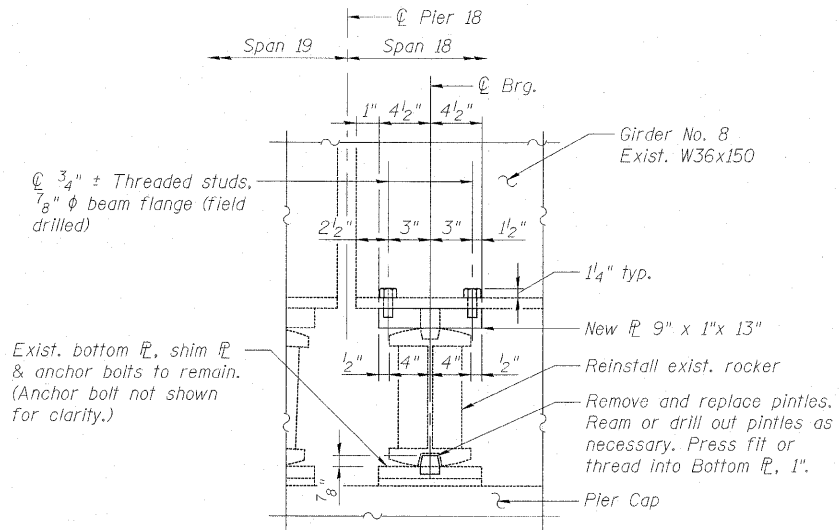


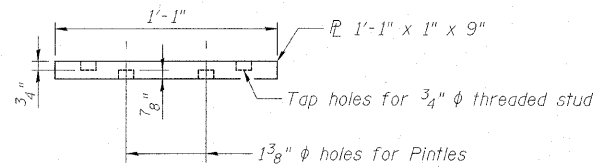
VIEW A
EXISTING BEARING REMOVAL DETAIL

Pier 18, Span 18, Girder 8
(Looking South)

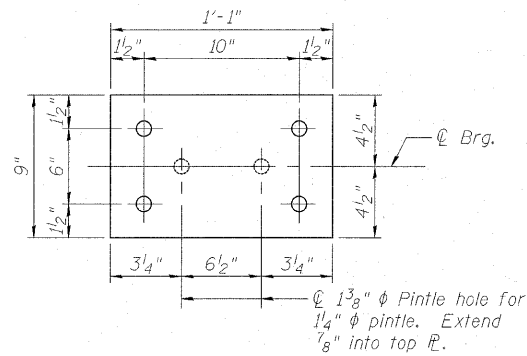


VIEW A
PROPOSED BEARING DETAIL

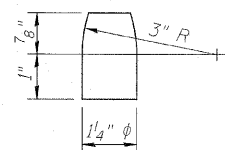
Pier 18, Span 18, Girder 8
(Looking South)



TOP PLATE DETAIL



TOP PLATE PLAN VIEW



PINTLE

TOTAL BILL OF MATERIAL

ITEM	UNIT	TOTAL
Jack and Reposition Bearings	Each	1
Furnishing and Erecting Structural Steel	Pound	40

BEAM REACTIONS

Load	Reaction
DL	39.6
LL+Imp	47.6
Total	87.2

Total load provided is for the service condition and no load factors have been applied. Jack capacity shall be a minimum of 150% greater than total supported load. See Special Provision Jack and Reposition Bearing.

NOTES

- See Sheet S-11 of S-35 for plan view.
- Work shall be performed per Special Provision Jack and Reposition Bearing.
- Rocker portion of bearing assembly shall be cleaned prior to reinstallation. Cleaning shall be in accordance with applicable portion of the Special Provision for Jack and Clean Bearings. Cost shall be included with Jack and Reposition Bearings.
- Cost of removing pintles, field drilling or reaming, field drilling holes, new pintles, top flange and studs shall be included in the cost of Furnishing and Erecting Structural Steel.
- The repair plate length shown are based on existing plan data. All dimensions shall be field verified prior to ordering materials.
- Structural steel shall conform to the requirements of AASHTO M270 Gr. 36.

USER NAME = msueller	DESIGNED - DF	REVISED -
PLOT SCALE = NTS	DRAWN - LAM	REVISED -
PLOT DATE = 2/8/2011 2:43:30 PM	CHECKED - BLU	REVISED -
	DATE - 01/21/2011	REVISED -



STATE OF ILLINOIS
DEPARTMENT OF TRANSPORTATION

BEARING REPAIR DETAILS
EASTBOUND FAI-80 OVER DES PLAINES RIVER
STRUCTURE NO. 099-0056

SHEET NO. S-19A OF S-35 SHEETS

F.A.I. RTE. 80	SECTION 99(2&3)RS-3	COUNTY WILL	TOTAL SHEETS 200	SHEET NO. 126A
FED. ROAD DIST. NO. [ILLINOIS] FED. AID PROJECT			CONTRACT NO. 60M64	