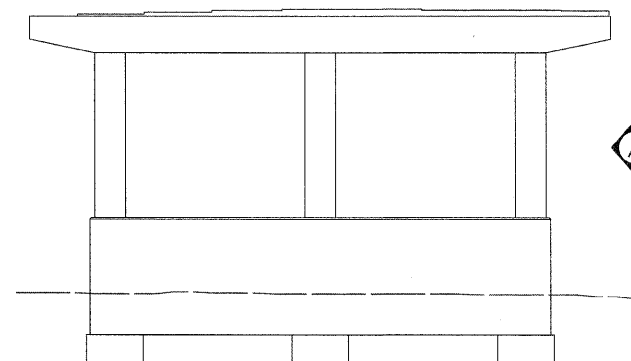
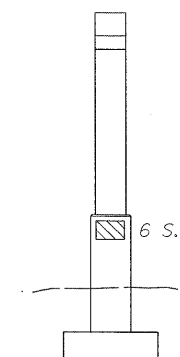


**WEST ELEVATION**  
(Looking East)



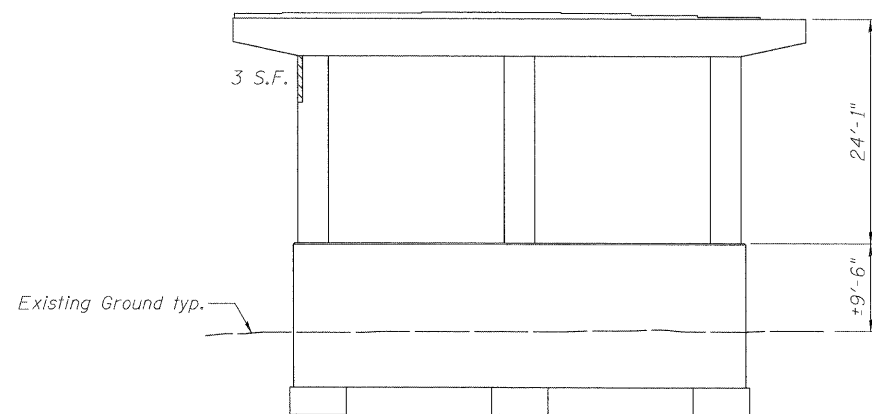
**EAST ELEVATION**  
(Looking West)



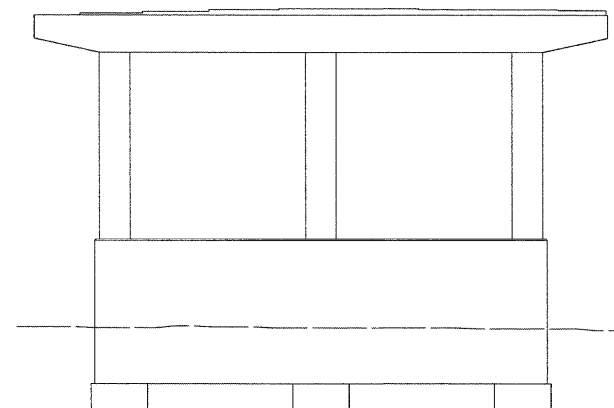
**VIEW A**

**PIER 1**

- Structural Repair of Concrete (Depth < 5") = 12 Sq. Ft.
- Structural Repair of Concrete (Depth > 5") = 0 Sq. Ft.



**WEST ELEVATION**  
(Looking East)



**EAST ELEVATION**  
(Looking West)

**PIER 2**

- Structural Repair of Concrete (Depth < 5") = 3 Sq. Ft.
- Structural Repair of Concrete (Depth > 5") = 0 Sq. Ft.

USER NAME = truelster	DESIGNED - JC	REVISED -
PLOT SCALE = 1/8" = 1'-0"	DRAWN - JC	REVISED -
PLT DATE = 1/20/2011 02:58:4 PM	CHECKED - DF	REVISED -
	DATE - 01/21/2011	REVISED -



**STATE OF ILLINOIS**  
**DEPARTMENT OF TRANSPORTATION**

**PIER REPAIR DETAILS**  
**EASTBOUND FAI-80 OVER DES PLAINES RIVER**  
**STRUCTURE NO. 099-0056**

F.A.I. RTE. 80	SECTION 99(2&3)RS-3	COUNTY WILL	TOTAL SHEETS 200	SHEET NO. 130
FED. ROAD DIST. NO. ILLINOIS FED. AID PROJECT			CONTRACT NO. 60M64	

SHEET NO. S-23 OF S-35 SHEETS

sv1056v05.cadd\cadd sheets\0990056-60M64-023-PR-2.dgn