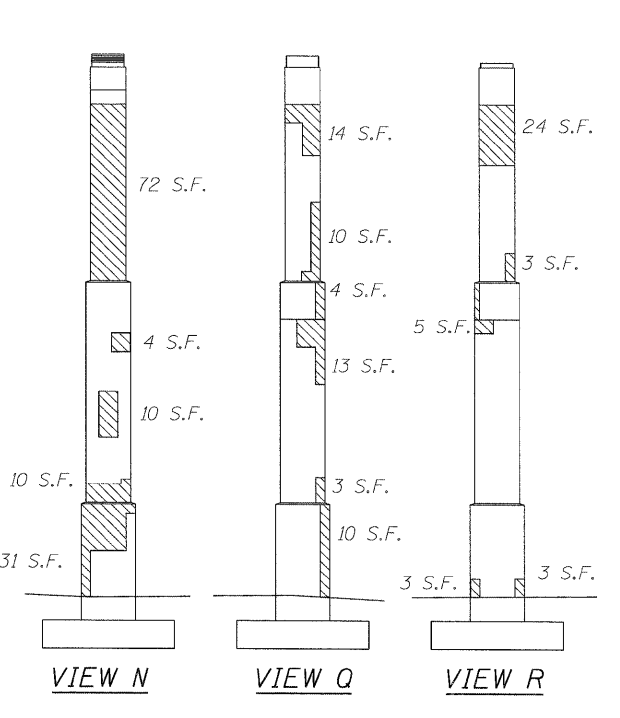
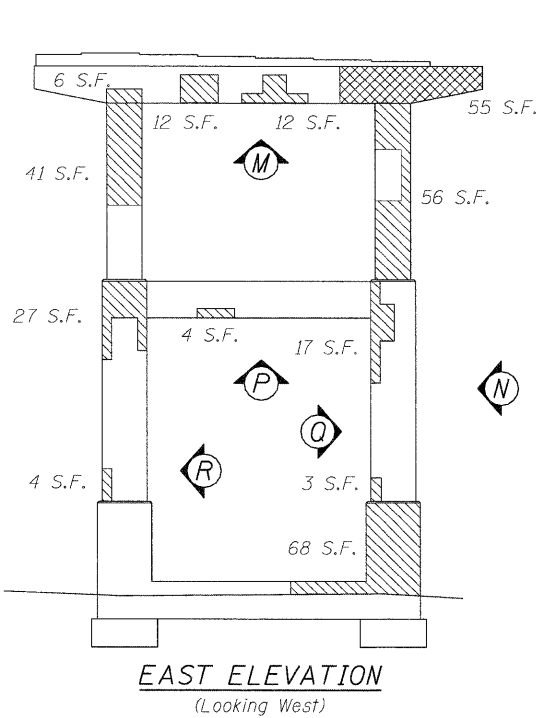
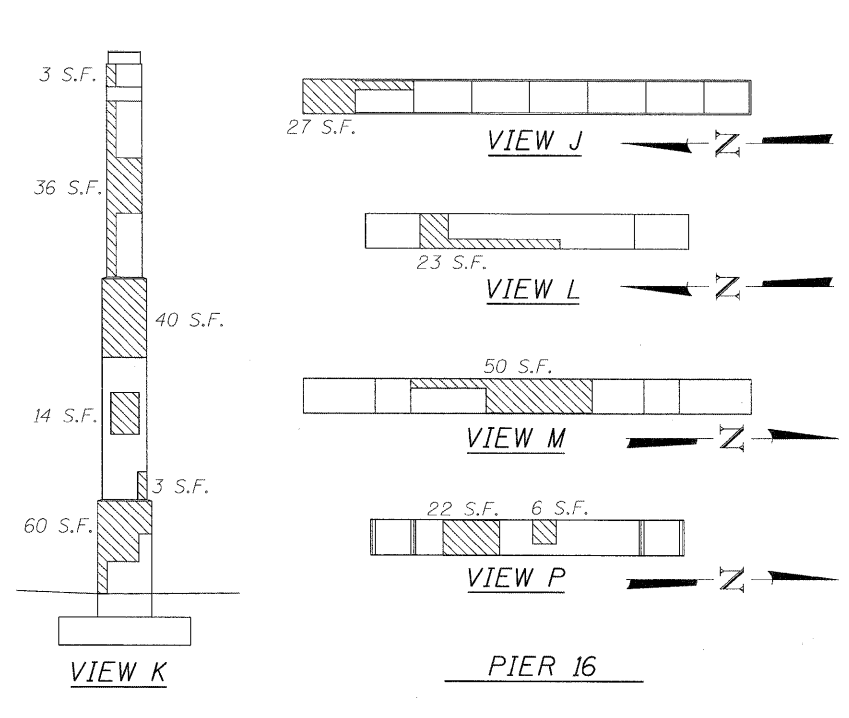
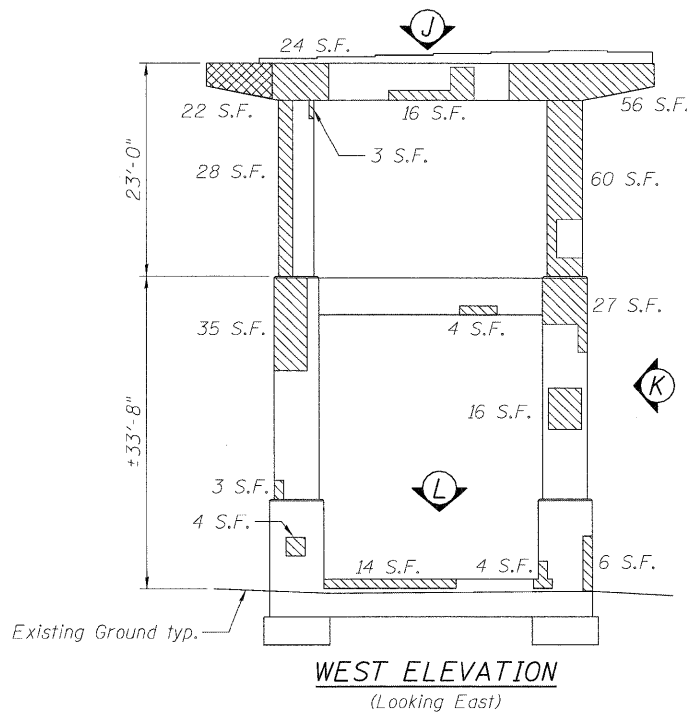


Structural Repair of Concrete (Depth < 5") = 622 Sq. Ft.  
 Structural Repair of Concrete (Depth > 5") = 44 Sq. Ft.

NOTES: See Sheet S-18 for Temporary Shoring and Cribbing, Special locations.



Structural Repair of Concrete (Depth < 5") = 1053 Sq. Ft.  
 Structural Repair of Concrete (Depth > 5") = 77 Sq. Ft.

NOTES: See Sheet S-18 for Temporary Shoring and Cribbing, Special locations.

|                                  |                   |           |
|----------------------------------|-------------------|-----------|
| USER NAME = InJaller             | DESIGNED - JC     | REVISED - |
| PLOT SCALE = NTS                 | DRAWN - JC        | REVISED - |
| PLOT DATE = 1/30/2011 2:58:25 PM | CHECKED - DF      | REVISED - |
|                                  | DATE - 01/21/2011 | REVISED - |



STATE OF ILLINOIS  
DEPARTMENT OF TRANSPORTATION

PIER REPAIR DETAILS  
EASTBOUND FAI-80 OVER DES PLAINES RIVER  
STRUCTURE NO. 099-0056  
SHEET NO. S-30 OF S-35 SHEETS

| F.A.J. RTE.        | SECTION    | COUNTY | TOTAL SHEETS              | SHEET NO. |
|--------------------|------------|--------|---------------------------|-----------|
| 80                 | 99I&3IRS-3 | WILL   | 200                       | 137       |
| CONTRACT NO. 60M64 |            |        | ILLINOIS FED. AID PROJECT |           |

s:\056\05\_cadd\cadd\_sheets\0990056-60M64-030-PIR-16.dgn