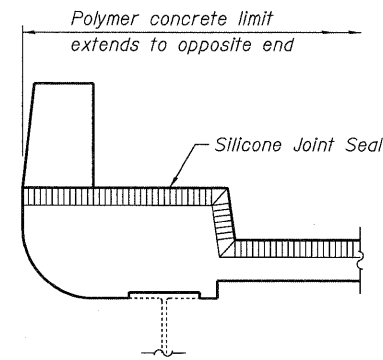
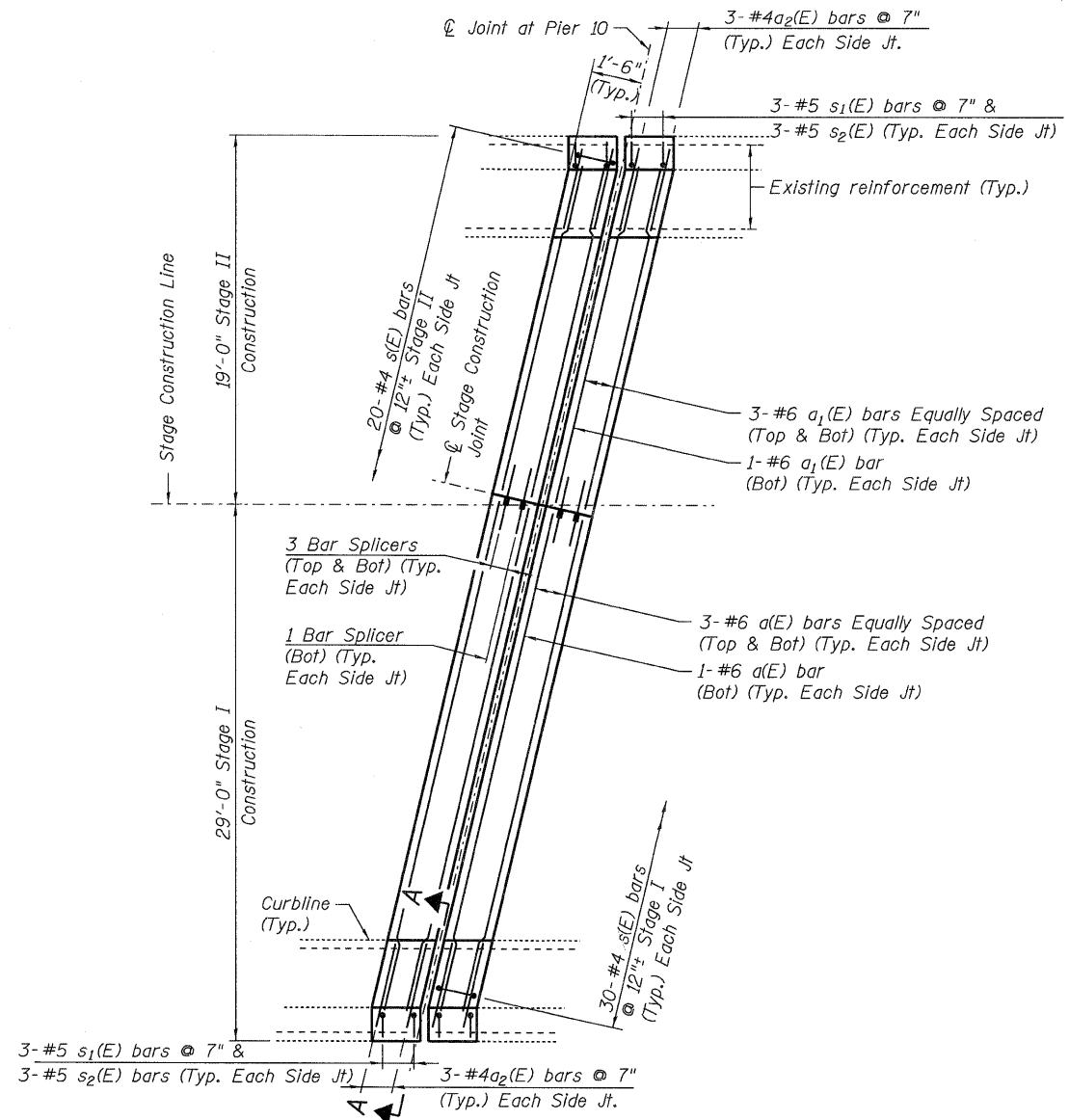


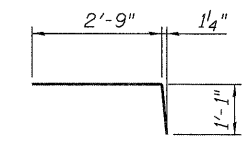
**SECTION A-A**



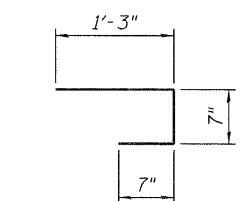
**TYPICAL END OF SEAL TREATMENT**  
(Silicone Joint Seal)



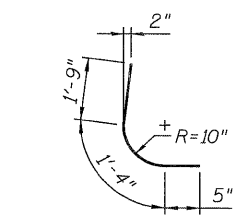
**PLAN**



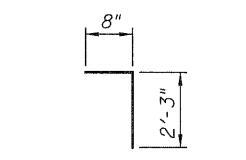
**BAR a2(E)**



**BAR s(E)**



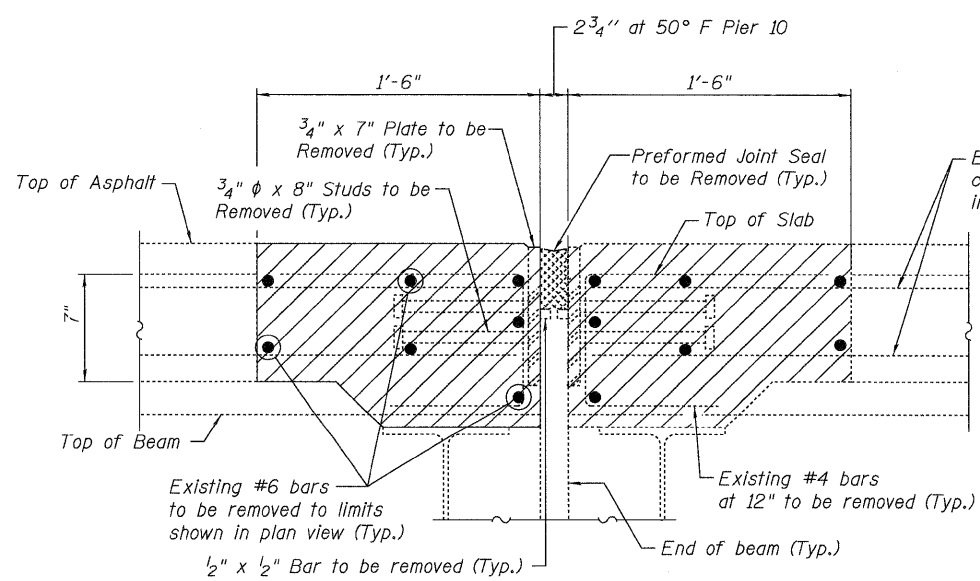
**BAR s1(E)**



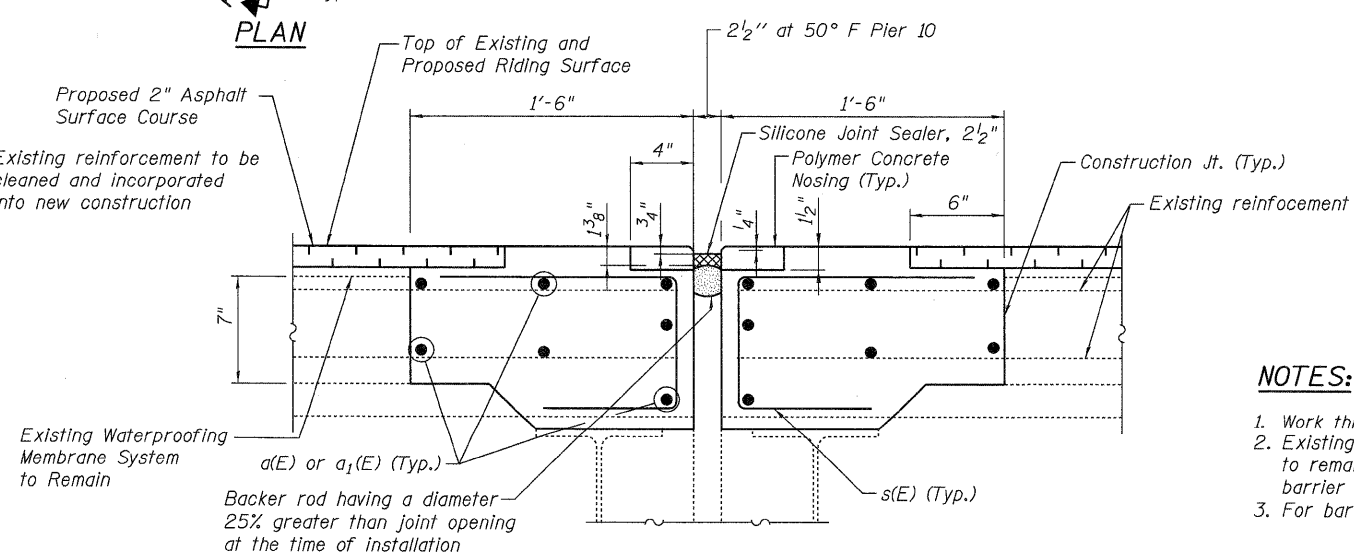
**BAR s2(E)**

**BILL OF MATERIAL**

Bar	No.	Size	Length	Shape
a(E)	14	#6	29'-0"	—
a1(E)	14	#6	18'-11"	—
a2(E)	12	#4	3'-10"	—
s(E)	100	#4	2'-5"	—
s1(E)	12	#5	3'-6"	—
s2(E)	12	#5	2'-11"	—
ITEM		UNIT	QUAN	
Reinforcement Bars, Epoxy Coated		Pound	1,280	
Polymer Concrete		Cu. Ft.	4.1	
Concrete Superstructure		Cu. Yd.	5.7	
Concrete Removal		Cu. Yd.	6.1	



**EXISTING**



**PROPOSED**

**SECTION B-B**

**NOTES:**

1. Work this sheet with Sheet No. S-3 of 15.
2. Existing curb and barrier longitudinal reinforcement to remain in place. Existing transverse curb and vertical barrier reinforcement to be removed.
3. For bar splicer details, see Sheet No. S-13 of 15.