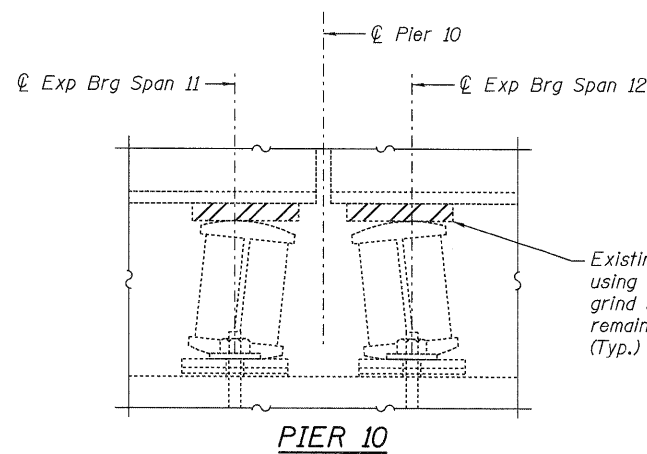
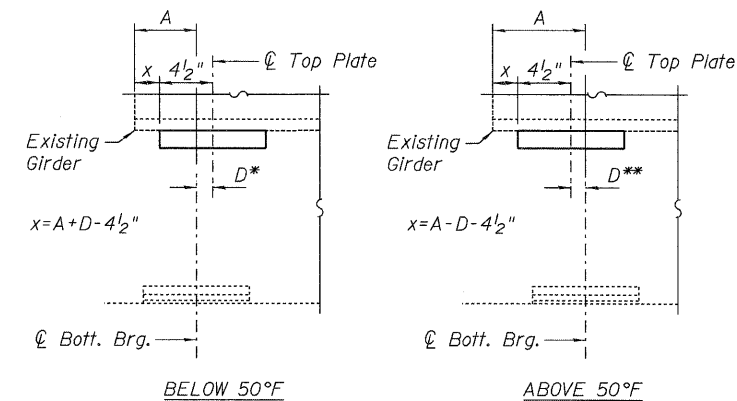


EXISTING BEARING REMOVAL DETAIL

(Looking North)

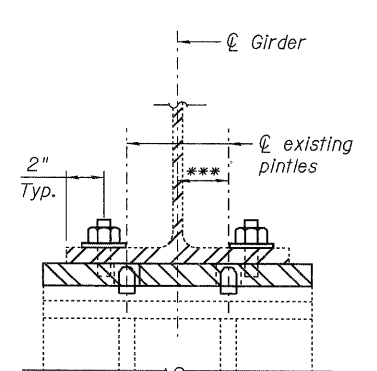


PIER 10



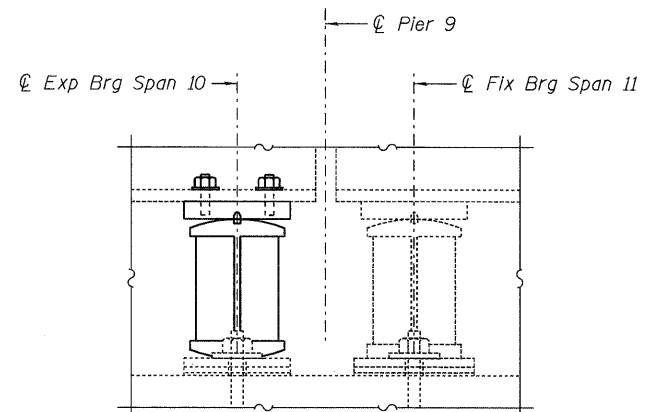
TOP PLATE AT BRG. REPOSITIONING

(Rocker not shown for clarity)
A=field measured



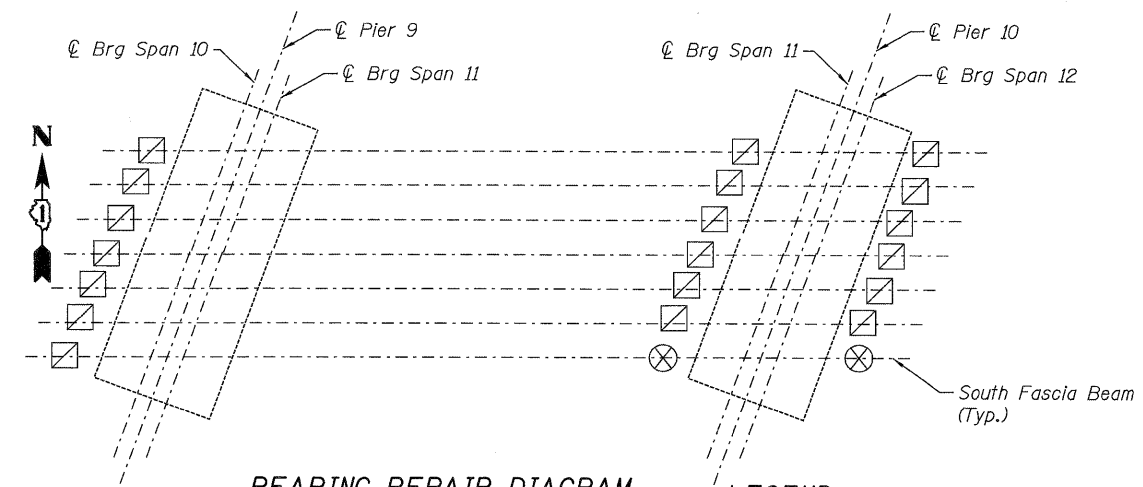
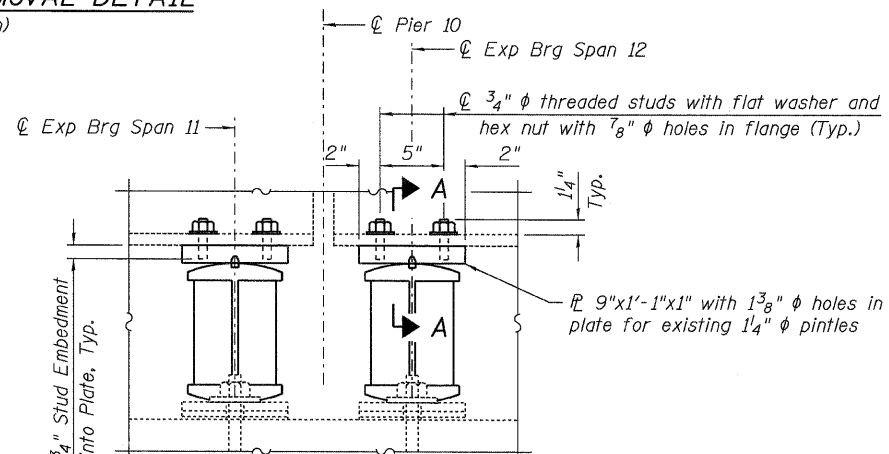
SECTION A-A

*** 3/4"± Contractor to field verify before drilling holes in plate



PROPOSED BEARING CONDITION @ 50° F

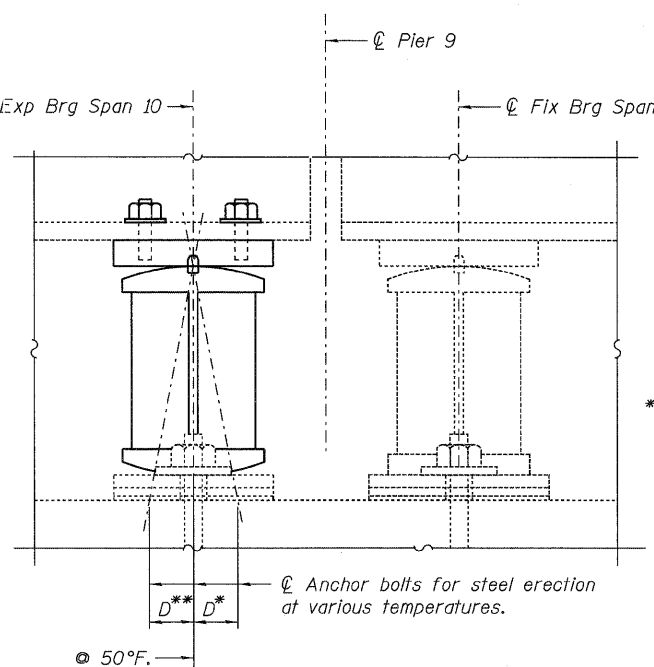
(Looking North)



BEARING REPAIR DIAGRAM

LEGEND:

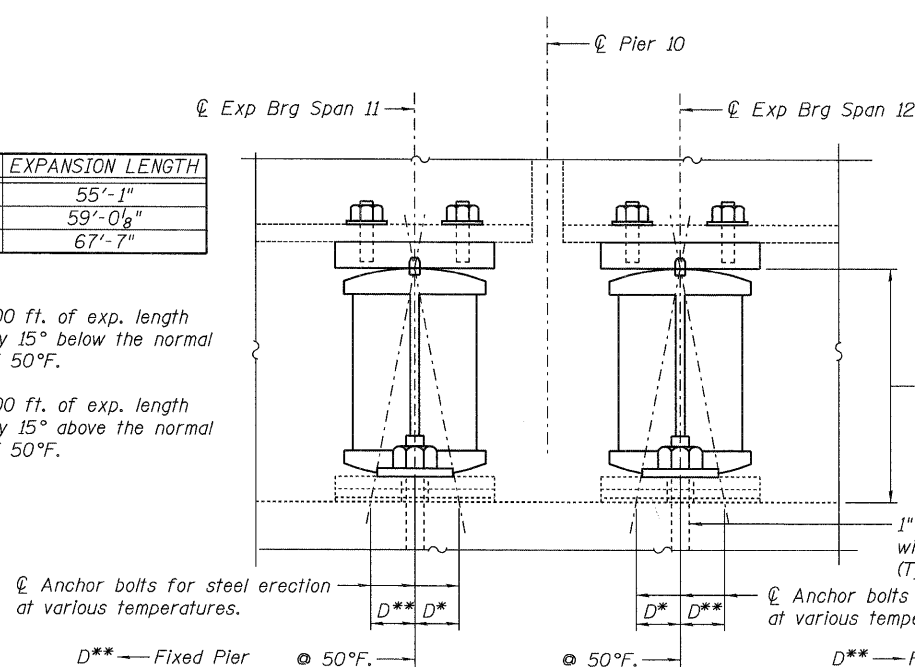
- ⊗ Remove and Replace (Reinstall) Bearing
- Jack and Reposition Bearings



SPAN	EXPANSION LENGTH
10	55'-1"
11	59'-0 1/8"
12	67'-7"

* $D = \frac{1}{8}''/100$ ft. of exp. length for every 15° below the normal temp. of 50°F.

** $D = \frac{1}{8}''/100$ ft. of exp. length for every 15° above the normal temp. of 50°F.



Existing bearing assembly (excluding anchor bolts) to be reused

1" φ x 12" Anchor bolt with plate washer (Typ.)

NOTES:

1. The cost to remove the existing top plate is paid as "Jack and Reposition Bearings" or "Remove and Replace Bearings".
2. If Contractor uses the same shoring system to repair the pier as he/she uses to jack and reposition the bearings and/or remove and replace the bearings, he/she will only be paid for the shoring system under "Temporary Shoring and Cribbing" and not under "Jack and Reposition Bearings" and/or "Remove and Replace Bearings".
3. For beam reactions, see Sheet No. S-9 and S-10 of 15.
4. "Remove and Replace Bearings" is the work required to remove the existing bearings for the pier cap reconstruction and reinstall the original bearings with new top plate, see Special Provisions.

BILL OF MATERIAL

ITEM	UNIT	TOTAL
Jack and Reposition Bearings	Each	19
Remove and Replace Bearings	Each	2
Furnishing and Erecting Structural Steel	Pound	697
Anchor Bolts, 1"	Each	4

EXPANSION BEARING POSITIONING FOR BEARING REPLACEMENT

(Looking North) (At ⊗ Locations)

DESIGNED - PCA	REVISED -
DRAWN - RCW	REVISED -
CHECKED - ACF	REVISED -
DATE - 01/21/2011	REVISED -



STATE OF ILLINOIS
DEPARTMENT OF TRANSPORTATION

BEARING REPAIRS
EASTBOUND FAI-80 OVER RAILROAD/GARDNER STREET
STRUCTURE NO. 099-0060

SHEET NO. S-5 OF 15 SHEETS

F.A.I. RTE.	SECTION	COUNTY	TOTAL SHEETS	SHEET NO.
80	99 (2&3) RS-3	WILL	200	153
FED. ROAD DIST. NO. 1 ILLINOIS FED. AID PROJECT			CONTRACT NO. 60M64	