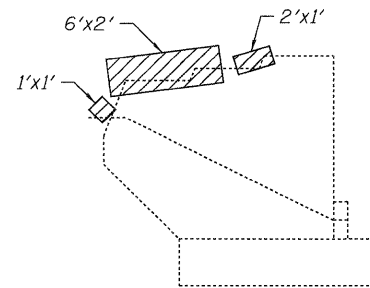
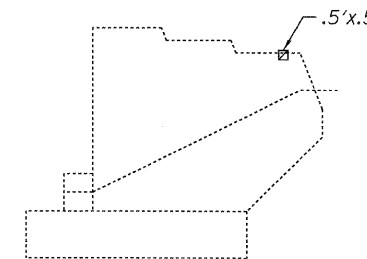


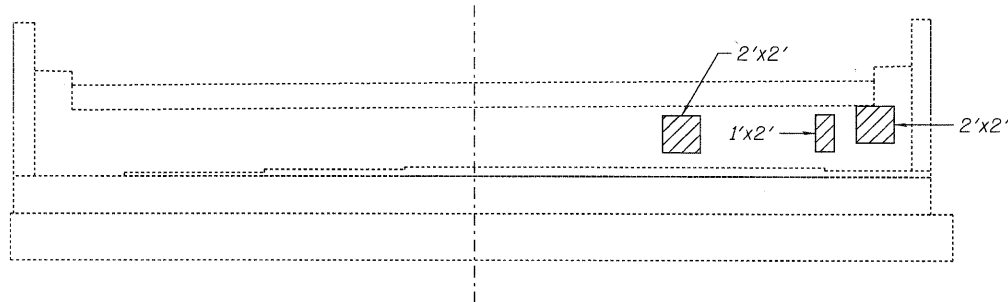
ELEVATION - SW ABUTMENT  
Looking West



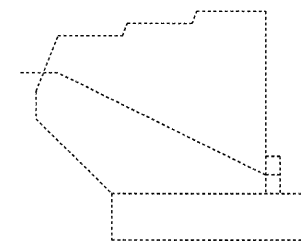
ELEVATION - SW ABUTMENT  
SOUTH WINGWALL  
Outside Face



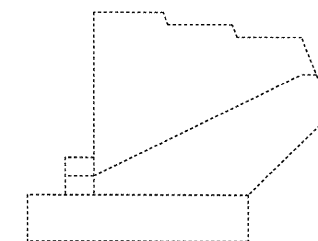
ELEVATION - SW ABUTMENT  
NORTH WINGWALL  
Outside Face



ELEVATION - SE ABUTMENT  
Looking East



ELEVATION - SE ABUTMENT  
SOUTH WINGWALL  
Outside Face




ELEVATION - SE ABUTMENT  
NORTH WINGWALL  
Outside Face

BILL OF MATERIAL

ITEM	UNIT	TOTAL
Structural Repair Of Concrete (Depth Equal To Or Less Than 5 Inches)	Sq.Ft.	31

LEGEND:

 Spalled or unsound concrete

NOTES:

1. Areas of proposed abutment repairs are estimated. Actual type, location and dimensions of abutment repairs are to be determined by the Engineer during construction.

DESIGNED - PCA	REVISED -
USER NAME = Isupanchek	DRAWN - LK
PLOT SCALE = 1/4"	CHECKED - MEA
PLOT DATE = 20-JAN-2011	DATE - 01/21/2011
	REVISED -



STATE OF ILLINOIS  
DEPARTMENT OF TRANSPORTATION

ABUTMENT REPAIRS  
EASTBOUND FAI-80 OVER RAILROAD/GARDNER STREET  
STRUCTURE NO. 099-0060

SHEET NO. 5-6 OF 15 SHEETS

F.A.I. RTE.	SECTION	COUNTY	TOTAL SHEETS	SHEET NO.
80	99 (2&3) RS-3	WILL	200	154
CONTRACT NO. 60M64				
FED. ROAD DIST. NO. 1   ILLINOIS FED. AID PROJECT				