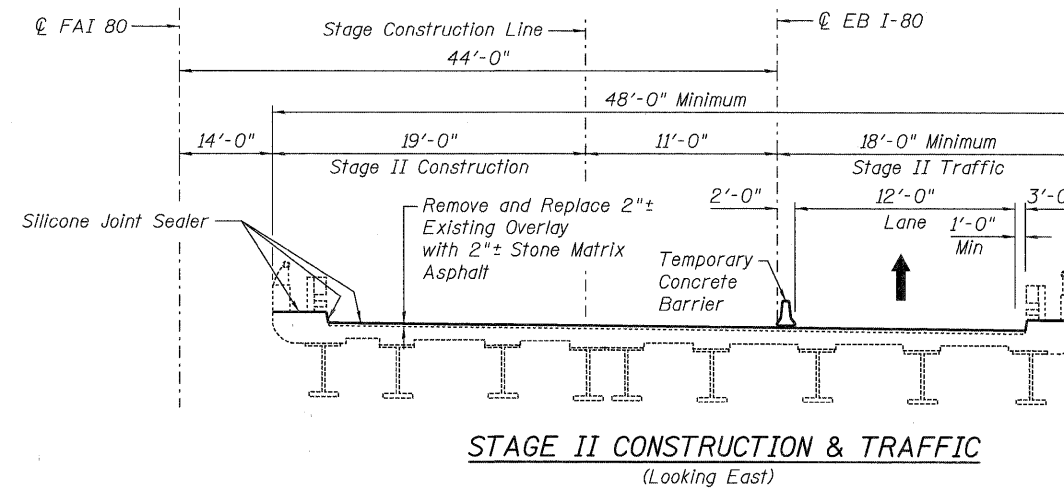
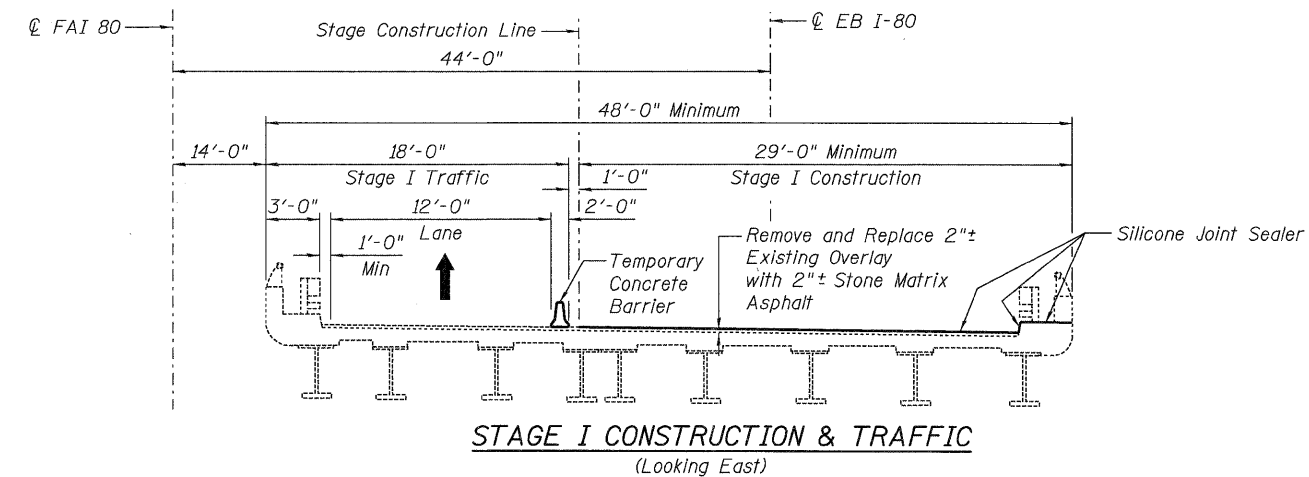


**TEMPORARY SHORING PLAN  
FOR PIER 4 REPAIRS**

For location of repairs, see Sheet S-6 of 7.

- ⊗ Temporary Support Reactions:  
Dead Load = 93 Kips  
Live Load plus Impact = 51 Kips  
Total = 144 Kips

Contractor to design shoring system for dead load plus live load plus impact. See Special Provision for Temporary Shoring and Cribbing.



**BILL OF MATERIAL**

ITEM	UNIT	TOTAL
Polymerized Hot-Mix Asphalt Surface Course, Stone Matrix Asphalt, N80	Ton	140
Hot-Mix Asphalt Surface Removal (Deck)	Sq. Yd.	1,240
Protective Shield	Sq. Yd.	1,461

**NOTES:**

1. Limits of protective shield extend from abutment to abutment and from out to out of parapet.
2. For temporary concrete barrier details, see Standard 704001. Cost included in Roadway Plans. For anchoring to bridge deck, see Sheet S-7 of 7.

DESIGNED - PCA	REVISED -
DRAWN - RCW	REVISED -
CHECKED - MEA	REVISED -
DATE - 01/21/2011	REVISED -



**STATE OF ILLINOIS  
DEPARTMENT OF TRANSPORTATION**

**CONSTRUCTION STAGING  
EASTBOUND FAI-80 OVER HICKORY CREEK  
STRUCTURE NO. 099-0062**

SHEET NO. S-2 OF 7 SHEETS

F.A.I. RTE.	SECTION	COUNTY	TOTAL SHEETS	SHEET NO.
80	99 (2&3) RS-3	WILL	200	165
FED. ROAD DIST. NO. 1 [ILLINOIS] FED. AID PROJECT			CONTRACT NO. 60M64	