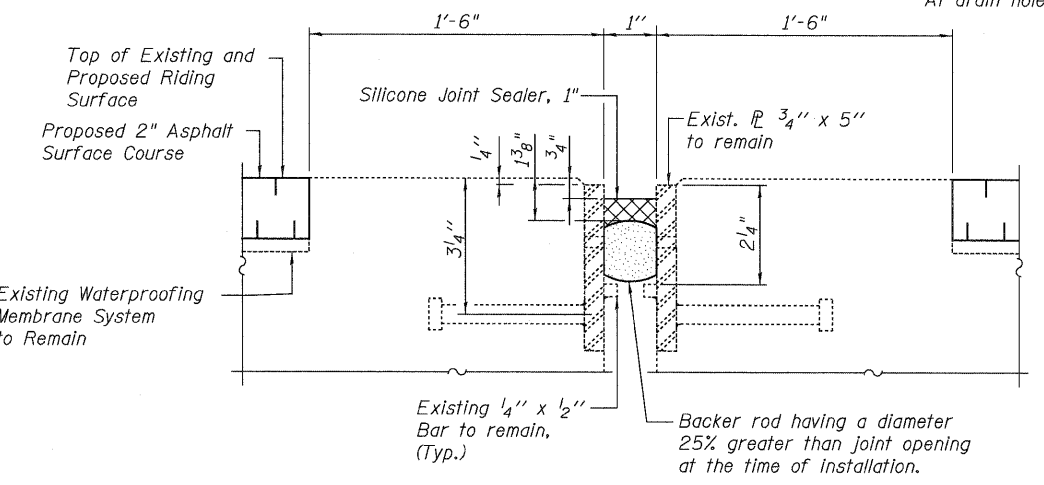
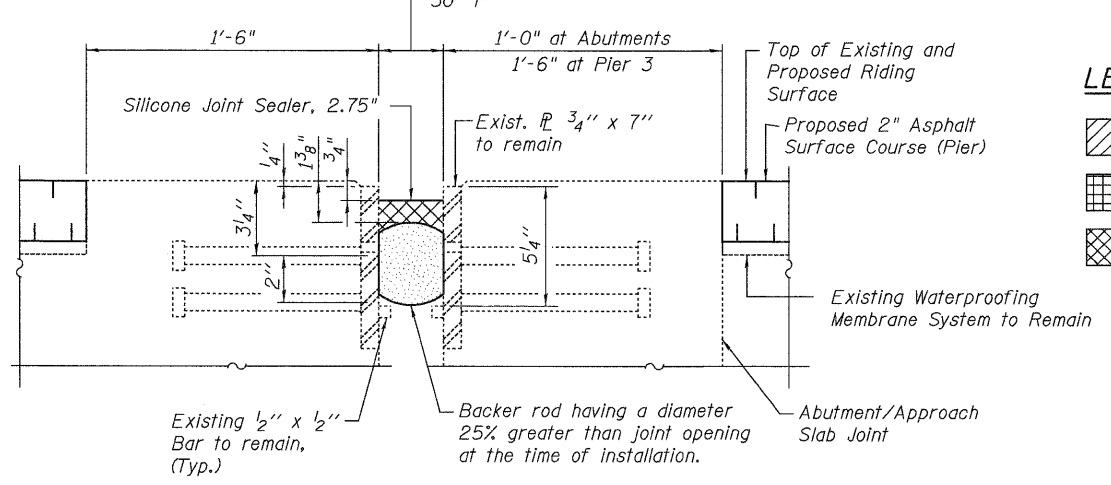


**PLAN**  
\*At drain holes



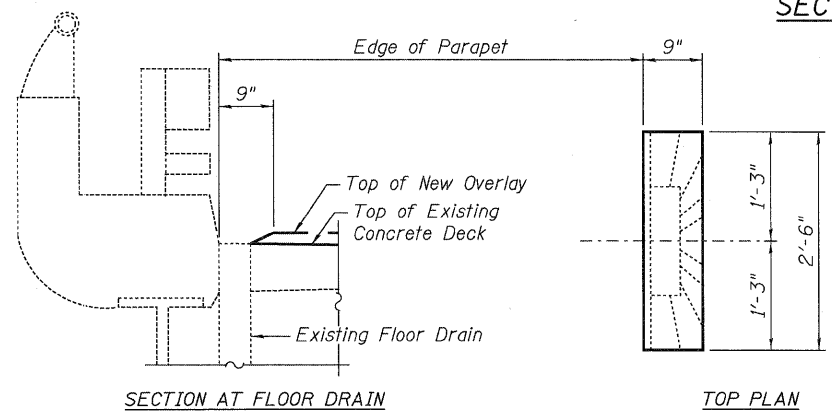
**SECTION A-A**



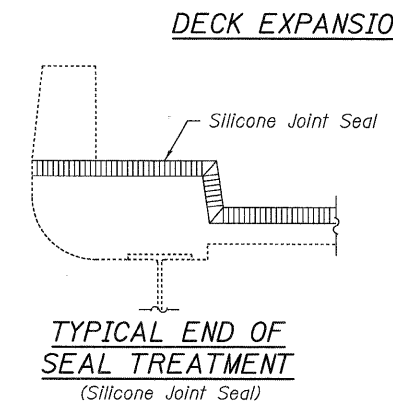
**SECTION B-B**

**LEGEND:**

|  |  |
|--|--|
|  | Deck Slab Repair (Partial)             |
|  | Deck Slab Repair (Full Depth, Type I)  |
|  | Deck Slab Repair (Full Depth, Type II) |



**OVERLAY TREATMENT AT FLOOR DRAIN**



**TYPICAL END OF SEAL TREATMENT**  
(Silicone Joint Seal)

**DECK EXPANSION JOINT DETAILS**

**NOTES:**

1. Remove the existing preformed joint seals and replace with silicone joint sealer as detailed in Sections A-A and B-B. Removal included in cost of Silicone Joint Sealer.
2. Areas of proposed deck repairs are estimated. Actual type, location and dimensions of deck repairs are to be determined by the Engineer during construction.
3. Deck Slab Repair concrete shall be used up to top of existing waterproofing membrane system. Cost included in Deck Slab Repair pay item.
4. The Contractor shall grind off any existing concrete patches flush with the existing top of deck. This shall be included in the cost of Hot-Mix Asphalt Surface Removal (Deck).

**BILL OF MATERIAL**

| ITEM                                   | UNIT   | TOTAL |
|--|--------|-------|
| Deck Slab Repair (Partial)             | Sq.Yd. | 359   |
| Deck Slab Repair (Full Depth, Type I)  | Sq.Yd. | 10 ** |
| Deck Slab Repair (Full Depth, Type II) | Sq.Yd. | 128   |
| Silicone Joint Sealer, 1"              | Foot   | 54    |
| Silicone Joint Sealer, 2.75"           | Foot   | 163   |

\*\*A nominal quantity has been provided to establish a unit price if Type I repairs are required.

|                   |          |
|-------------------|----------|
| DESIGNED - PCA    | REVISD - |
| DRAWN - LK        | REVISD - |
| CHECKED - MEA     | REVISD - |
| DATE - 01/21/2011 | REVISD - |



**STATE OF ILLINOIS**  
**DEPARTMENT OF TRANSPORTATION**

**DECK & EXPANSION JOINT REPAIRS**  
**EASTBOUND FAI-80 OVER HICKORY CREEK**  
**STRUCTURE NO. 099-0062**

|   |                       |             |                  |                    |
|---|-----------------------|-------------|------------------|--------------------|
| F.A.I. RTE. 80                                  | SECTION 99 (2&3) RS-3 | COUNTY WILL | TOTAL SHEETS 200 | SHEET NO. 166      |
| FED. ROAD DIST. NO. 1 ILLINOIS FED. AID PROJECT |                       |             |                  | CONTRACT NO. 60M64 |