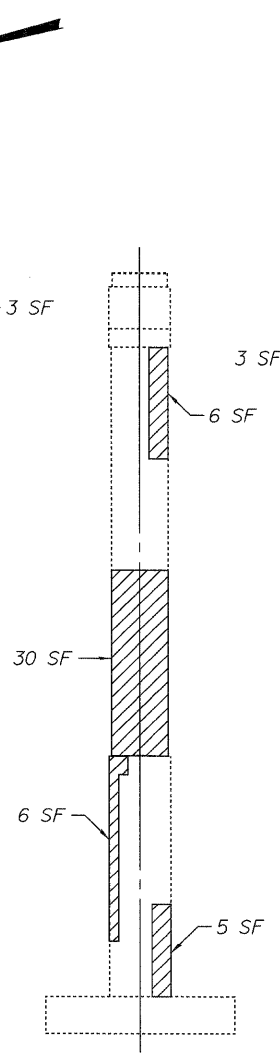
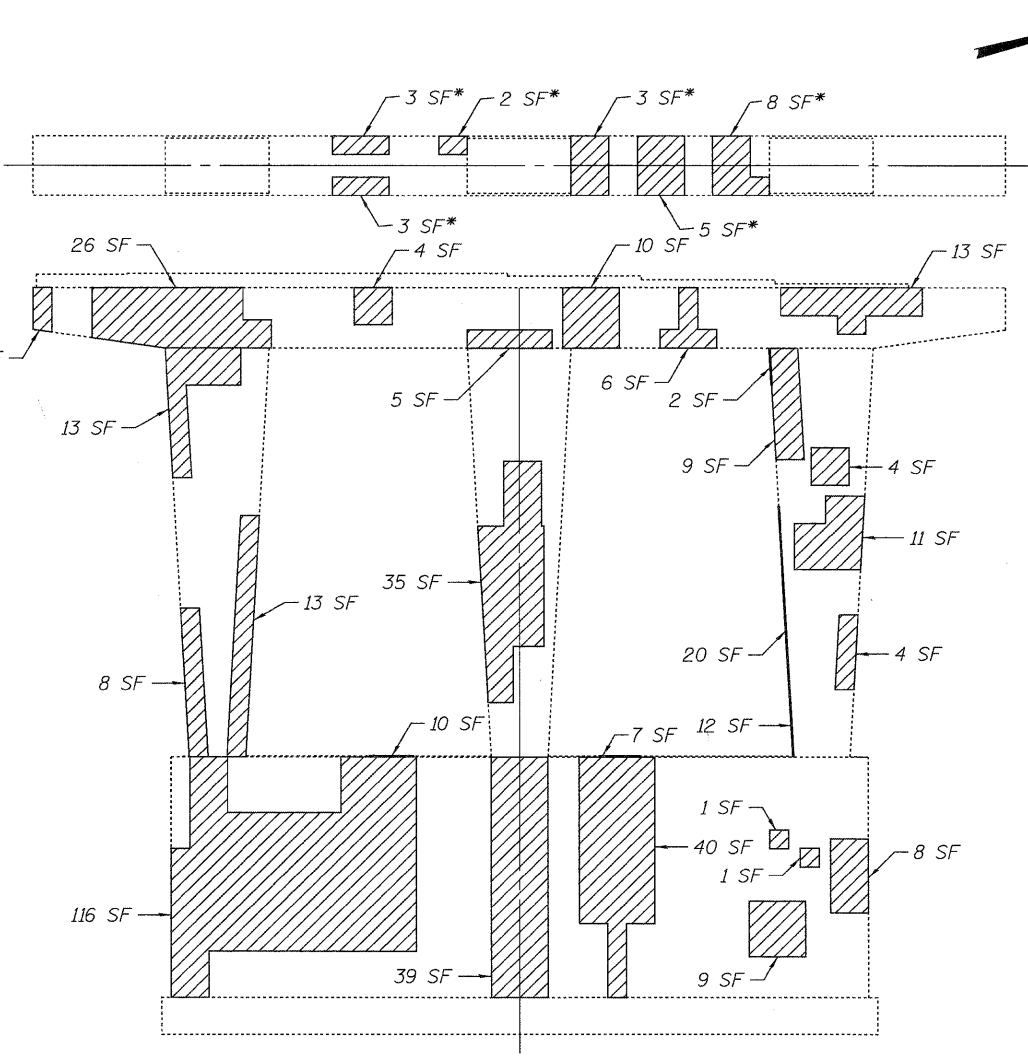


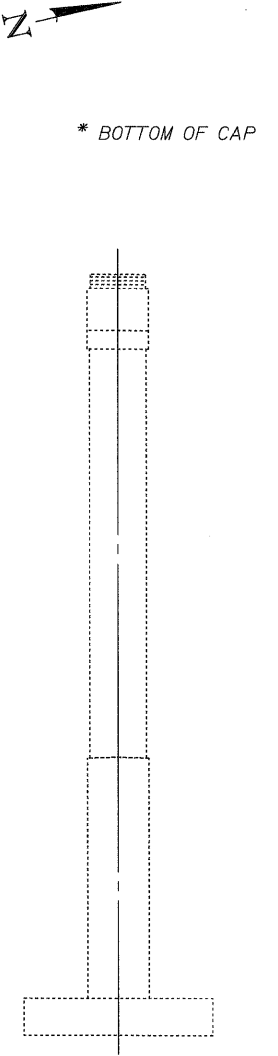
WEST ELEVATION
Looking East



SOUTH ELEVATION
Looking North



EAST ELEVATION
Looking West



NORTH ELEVATION
Looking South

* BOTTOM OF CAP

LEGEND:

Spalled or unsound concrete - SF Indicates Square Feet.

BILL OF MATERIAL

ITEM	UNIT	TOTAL
Structural Repair Of Concrete (Depth Greater Than 5 Inches)	Sq.Ft.	194
Structural Repair Of Concrete (Depth Equal To Or Less Than 5 Inches)	Sq.Ft.	634
Temporary Shoring and Cribbing	Each	4

NOTES:

1. Areas of proposed pier repairs are estimated. Actual type, location and dimensions of pier repairs are to be determined by the Engineer during construction.
2. For location of temporary shoring and cribbing for pier cap repairs, see Sheet S-2 of 7.

DESIGNED - PCA	REVISED -
USER NAME = lsupancheck	DRAWN - LK
PLOT SCALE = 1/4"	CHECKED - MEA
PLOT DATE = 20-JAN-2011	DATE - 01/21/2011
FILE NAME = IP_PvPdms34575\0990062-60M64-006-PIER.dgn	REVISED -



STATE OF ILLINOIS
DEPARTMENT OF TRANSPORTATION

PIER 4 REPAIRS
EASTBOUND I-80 OVER HICKORY CREEK
STRUCTURE NO. 099-0062

SHEET NO. 5-6 OF 7 SHEETS

F.A.I. RTE. 80	SECTION 99 (2&3) RS-3	COUNTY WILL	TOTAL SHEETS 200	SHEET NO. 169
CONTRACT NO. 60M64				
FED. ROAD DIST. NO. 1 [ILLINOIS] FED. AID PROJECT				