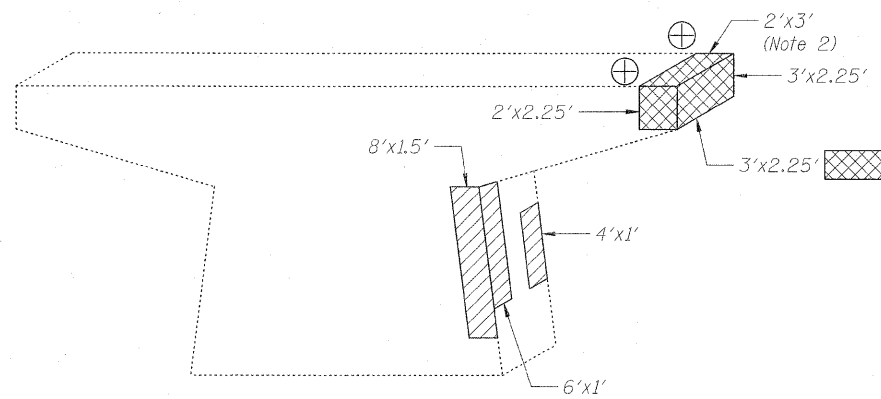
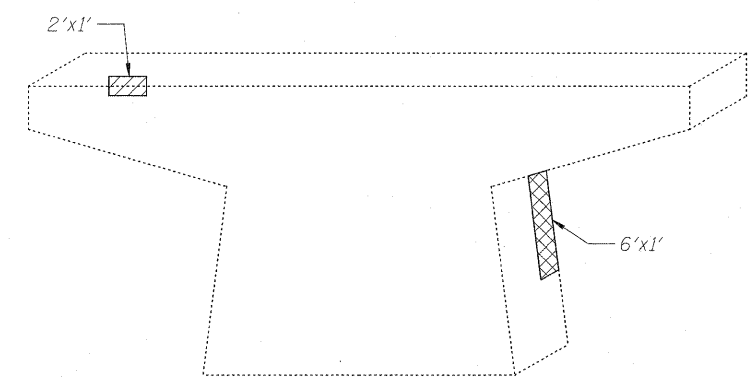


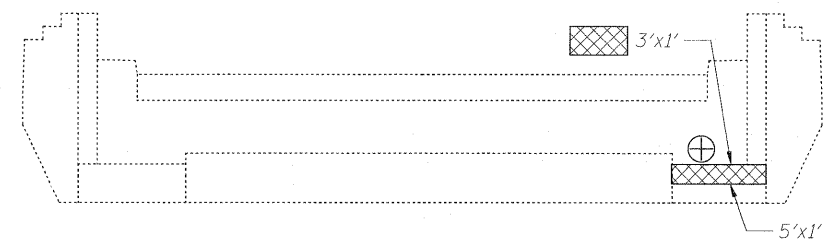
**SOUTHEAST ABUTMENT**  
Looking East



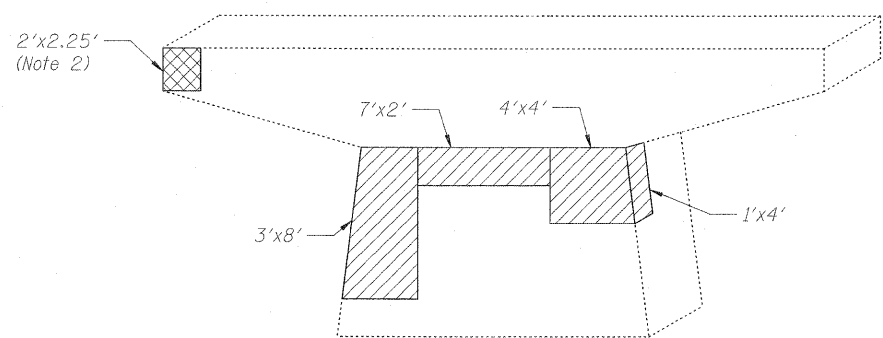
**PIER 3**  
West Face



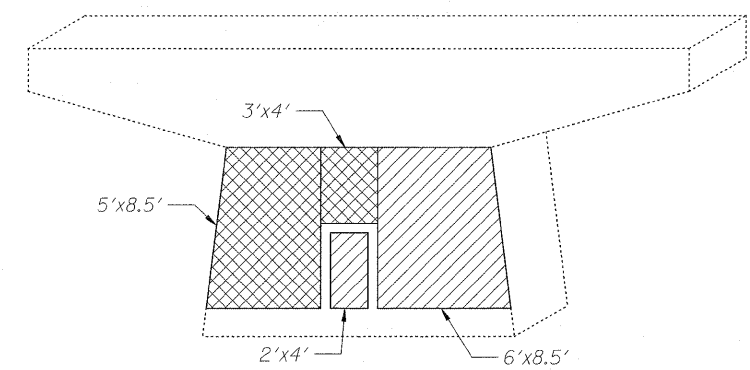
**PIER 4**  
West Face



**SOUTHWEST ABUTMENT**  
Looking West



**PIER 3**  
East Face



**PIER 4**  
East Face

**LEGEND:**

- Structural Repair of Concrete (Depth <= 5")
- Structural Repair of Concrete (Depth > 5")
- Temporary Shoring and Cribbing

INTERIOR GIRDER REACTION TABLE			
	SPAN-1	SPAN-2	SPAN-3
R <sub>2</sub> (k)	22.9	50.7	23.5
R <sub>4</sub> (k)	31.9	36.9	32.2
Imp. (k)	9.6	8.9	9.7
R <sub>Total</sub> (k)	64.4	96.5	65.4

**BILL OF MATERIAL**

ITEM	UNIT	TOTAL
Structural Repair of Concrete (Depth <= 5")	Sq. Ft.	193
Structural Repair of Concrete (Depth > 5")	Sq. Ft.	188
Temporary Shoring and Cribbing	Each	5

- Notes:
- See the Special Provision "Temporary Shoring and Cribbing" for design, installation, and removal of the temporary shoring and cribbing support system. Approximate beam reactions are given in Interior Girder Reaction Table at the locations shown.
  - Repairs to the south side of Pier 3 shall be completed during Stage I Construction prior to switching traffic to the south side of the roadway.

q:\dot\21050.005 (1-80 phase 1)\drawings\cadd sheets\bridge p8e\richards\_eb\099-0064-0160M64-Piers-Richards.dgn