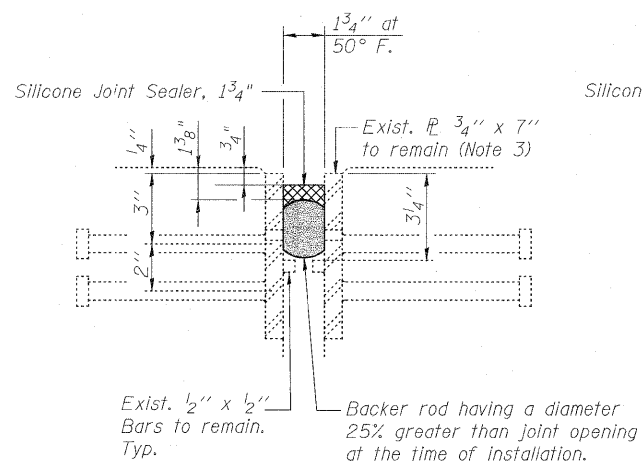
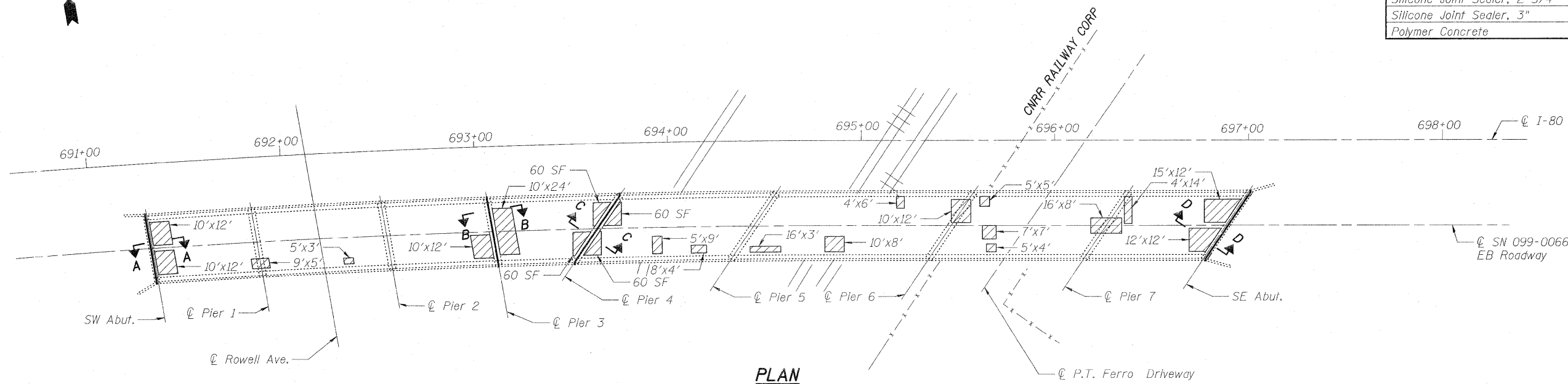


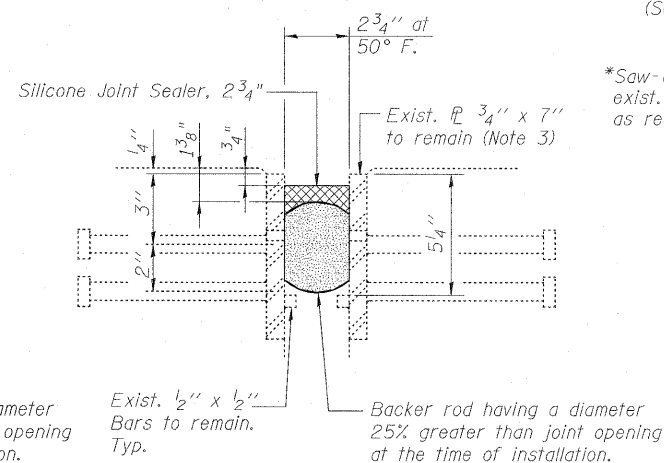


BILL OF MATERIAL

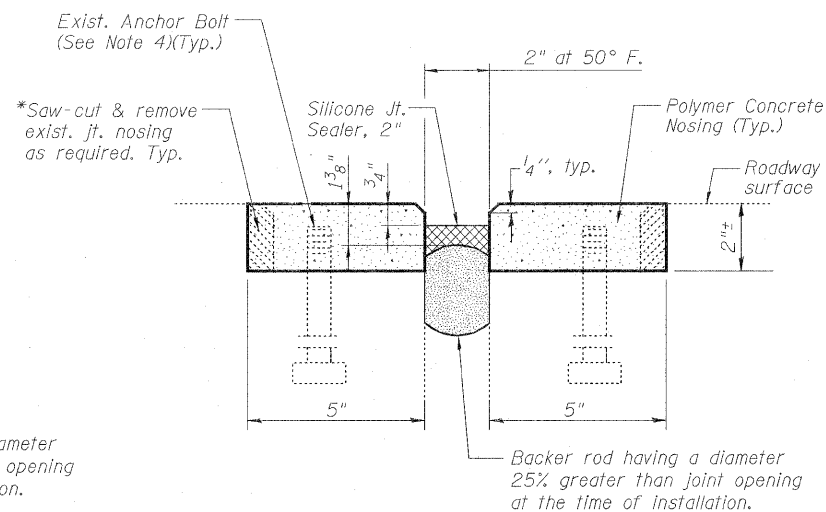
ITEM	UNIT	TOTAL
Deck Slab Repair (Partial)	Sq. Yd.	206
Silicone Joint Sealer, 1 3/4"	Foot	37
Silicone Joint Sealer, 2"	Foot	44
Silicone Joint Sealer, 2 3/4"	Foot	37
Silicone Joint Sealer, 3"	Foot	44
Polymer Concrete	Cu. Ft.	13



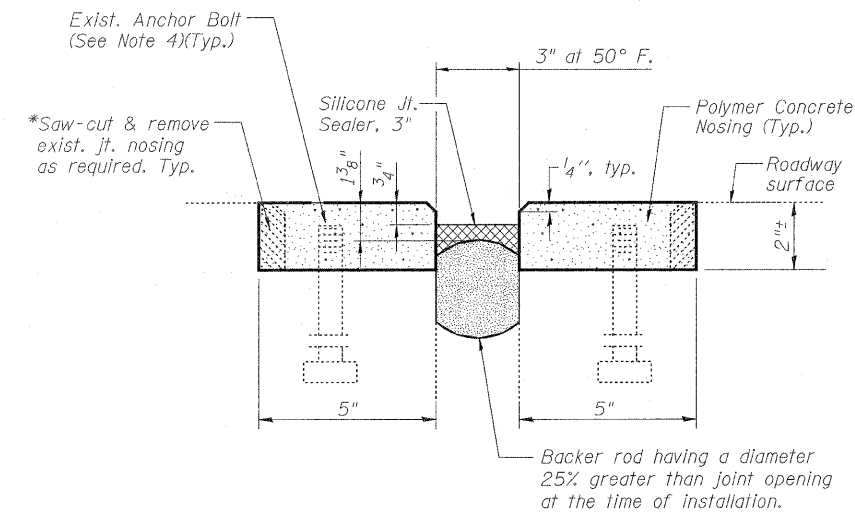
SECTION A-A
(At Southwest Abutment)



SECTION B-B
(At Pier 3)



SECTION C-C
(At Pier 4)



SECTION D-D
(At Southeast Abutment)

* Cost included with Polymer Concrete.

- Notes:
- See General Note 4 on Sheet S2 of S8.
 - Removal and disposal of the existing joint fillers and neoprene seals will be included with the cost of Silicone Joint Sealer, of the size specified.
 - Existing plates to be cleaned prior to installation of backer rod. Cost included with Silicone Joint Sealer, of the size specified.
 - Existing anchor bolts to remain and to be incorporated into the Polymer Concrete. Cost included with Polymer Concrete.

LEGEND:

Deck Slab Repair (Partial)

DECK EXPANSION JOINT DETAILS

USER NAME = agergiooglu(Rdwy_Lisle)	DESIGNED - A.Y./L.C.	REVISED -
PLOT CONFIG = PDF(1-80_TopoGrey_Large).pl	DRAWN - L.C./A.Y.	REVISED -
PLOT SCALE = 1:30	CHECKED - A.Y./R.L.D.	REVISED -
PLOT DATE = 2/8/2011	DATE - 01/21/2011	REVISED -



STATE OF ILLINOIS
DEPARTMENT OF TRANSPORTATION

DECK AND EXPANSION JOINT REPAIRS
EASTBOUND I-80 OVER CNRR AND ROWELL AVENUE
SN 099-0066

SCALE: SHEET S3 of S8 STA. TO STA.

F.A.I. RTE.	SECTION	COUNTY	TOTAL SHEETS	SHEET NO.
80	99 (2&3) RS-3	WILL	200	179
FED. ROAD DIST. NO. 1 ILLINOIS FED. AID PROJECT				CONTRACT NO. 60M64