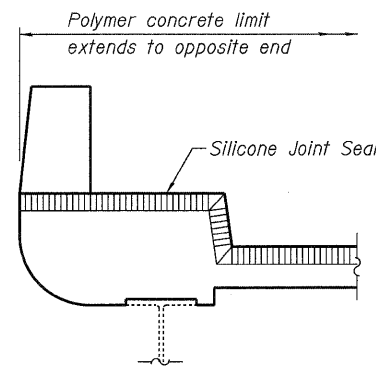
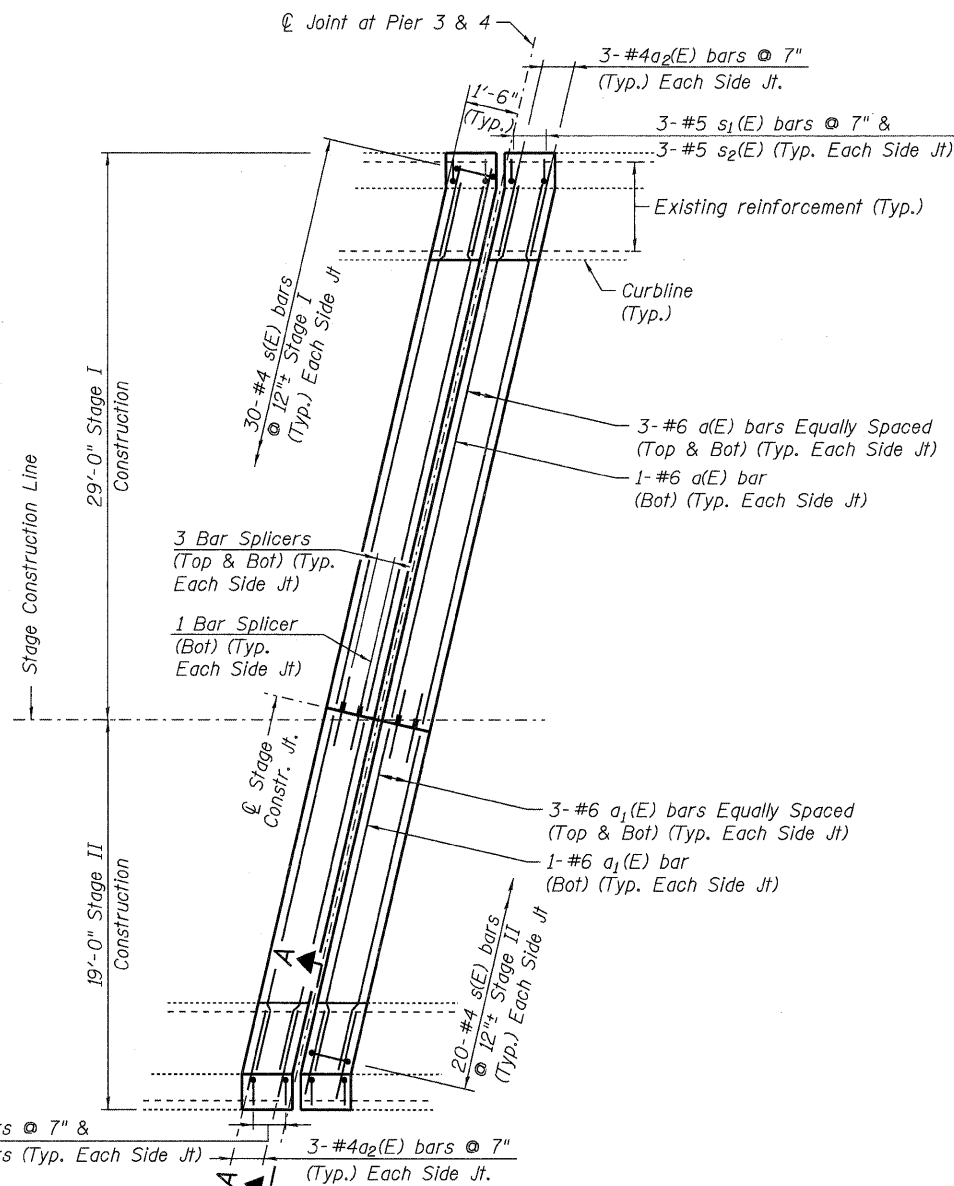


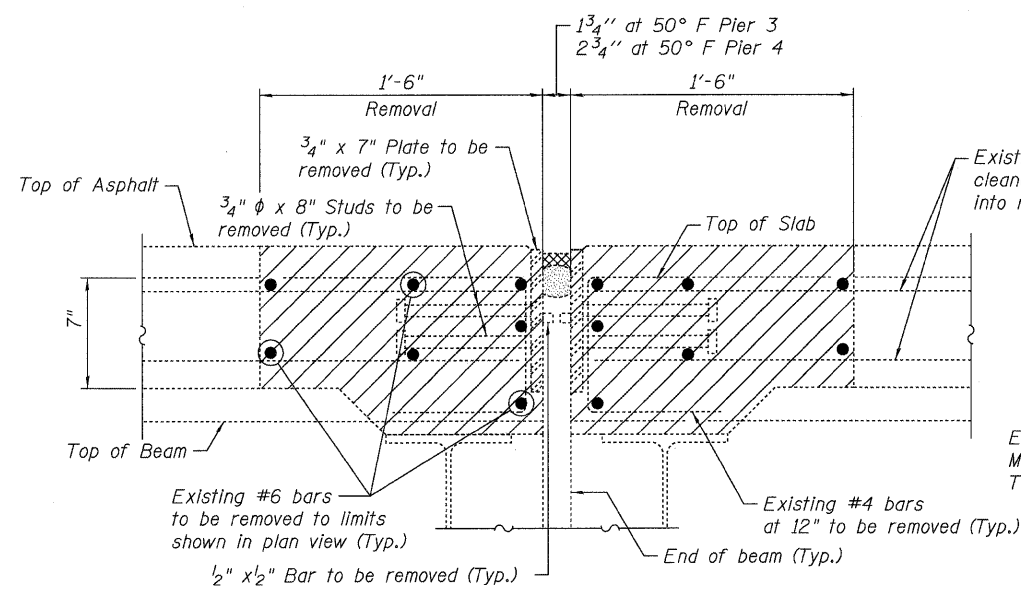
SECTION A-A



TYPICAL END OF SEAL TREATMENT
(Silicone Joint Seal)

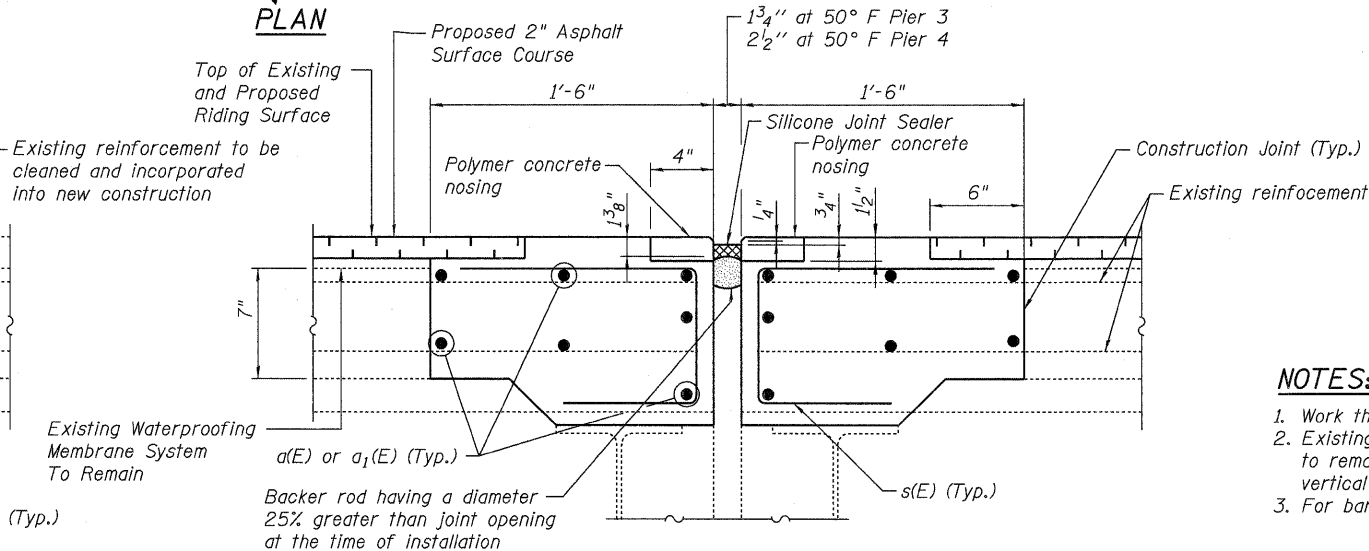


PLAN

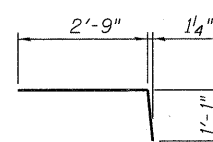


EXISTING

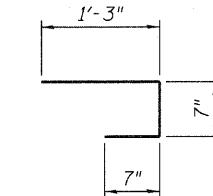
(Silicone Joint at Pier 3 shown)



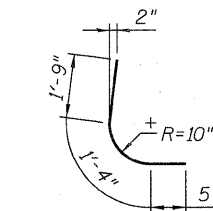
PROPOSED



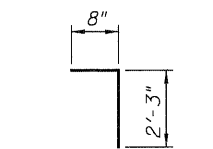
BAR a2(E)



BAR s(E)



BAR s1(E)



BAR s2(E)

BILL OF MATERIAL

Bar	No.	Size	Length	Shape
a(E)	28	#6	29'-0"	—
a1(E)	28	#6	18'-11"	—
a2(E)	24	#4	3'-10"	—
s(E)	200	#4	2'-5"	—
s1(E)	24	#5	3'-6"	—
s2(E)	24	#5	2'-11"	—
ITEM		UNIT	QUAN	
Reinforcement Bars, Epoxy Coated		Pound	2,560	
Polymer Concrete		Cu. Ft.	8.2	
Concrete Superstructure		Cu. Yd.	11.4	
Concrete Removal		Cu. Yd.	12.2	

NOTES:

1. Work this sheet with Sheet No. S-3 of 14.
2. Existing curb and barrier longitudinal reinforcement to remain in place. Existing transverse curb and vertical barrier reinforcement to be removed.
3. For bar splicer details, see Sheet No. S-12 of 14.

DESIGNED - PCA/ML	REVISED -
DRAWN - LK	REVISED -
CHECKED - ACF	REVISED -
DATE - 1/21/2011	REVISED -



STATE OF ILLINOIS
DEPARTMENT OF TRANSPORTATION

DECK & EXPANSION JOINT REPAIRS
WESTBOUND I-80 OVER RAILROAD/GARDNER STREET
STRUCTURE NO. 099-0061

F.A.I. RTE.	SECTION	COUNTY	TOTAL SHEETS	SHEET NO.
80	99 (4&4-1) RS-3	WILL	203	155
CONTRACT NO. 60M66				

SHEET NO. S-4 OF 14 SHEETS

FED. ROAD DIST. NO. 1 ILLINOIS FED. AID PROJECT