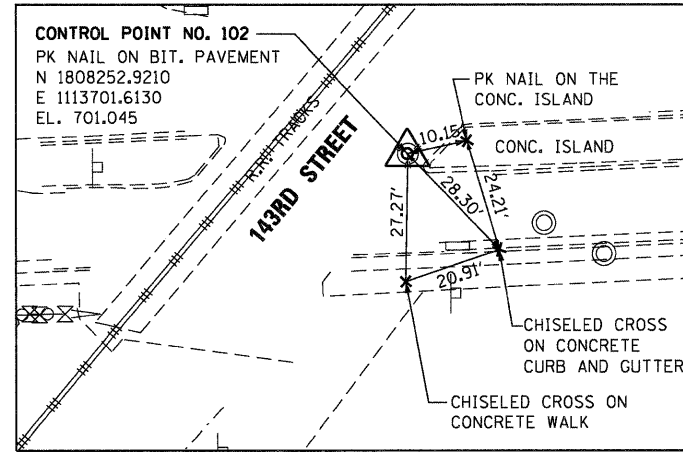


CONTROL POINT NO. 106
 SET CROSS IN CONC. WALK
 N 1807086.2070
 E 1112720.7510
 EL. 706.42

CONTROL POINT NO. 106

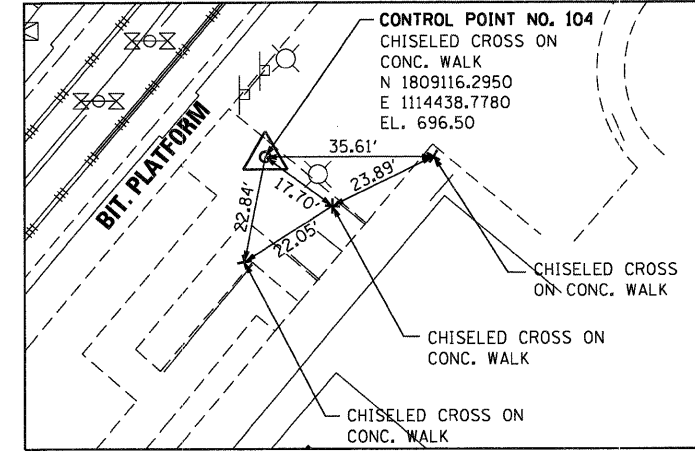
SCALE: 1" = 20'



CONTROL POINT NO. 102
 PK NAIL ON BIT. PAVEMENT
 N 1808252.9210
 E 1113701.6130
 EL. 701.045

CONTROL POINT NO. 102

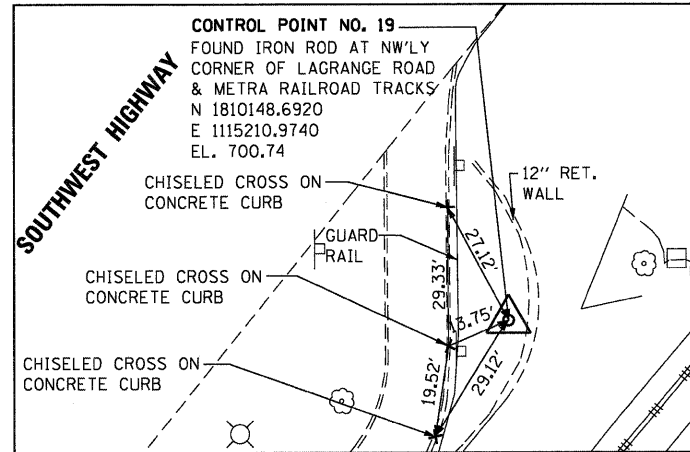
SCALE: 1" = 20'



CONTROL POINT NO. 104
 CHISELED CROSS ON CONC. WALK
 N 1809116.2950
 E 1114438.7780
 EL. 696.50

CONTROL POINT NO. 104

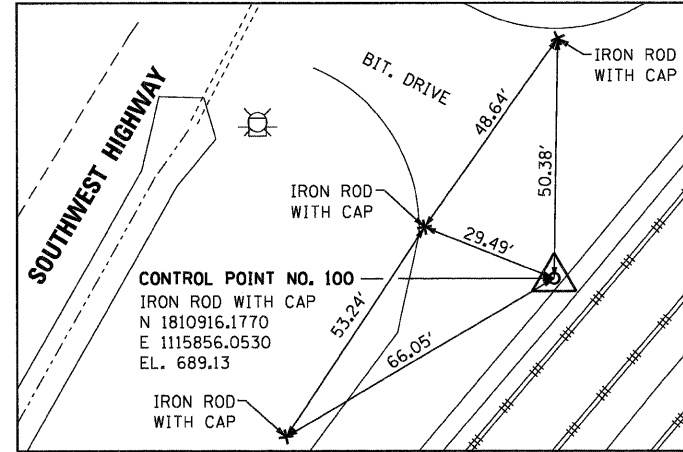
SCALE: 1" = 20'



CONTROL POINT NO. 19
 FOUND IRON ROD AT NW'LY CORNER OF LAGRANGE ROAD & METRA RAILROAD TRACKS
 N 1810148.6920
 E 1115210.9740
 EL. 700.74

CONTROL POINT NO. 19

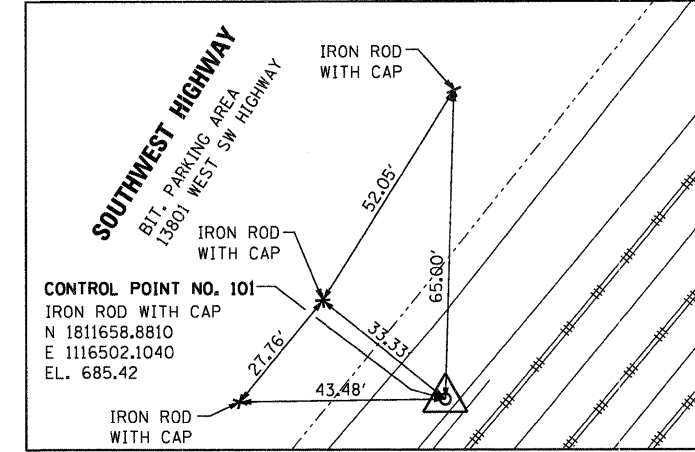
SCALE: 1" = 20'



CONTROL POINT NO. 100
 IRON ROD WITH CAP
 N 1810916.1770
 E 1115856.0530
 EL. 689.13

CONTROL POINT NO. 100

SCALE: 1" = 20'



CONTROL POINT NO. 101
 IRON ROD WITH CAP
 N 1811658.8810
 E 1116502.1040
 EL. 685.42

CONTROL POINT NO. 101

SCALE: 1" = 20'

TEMPORARY BENCHMARK "E"

CHISELED CROSS ON THE SW'LY ANCHOR BOLT OF THE SE'LY CANTILEVER RAILROAD CROSSING SIGNAL AT 143RD STREET.
 N 1808297.2710
 E 1113732.9280
 EL. 702.165

CHISELED CROSS ON THE NE'LY ANCHOR BOLT OF THE ELECTRIC BILLBOARD SIGN, ±50' NW'LY OF SW'LY PLATFORM OF METRA STATION.
 N 1808925.7770
 E 1114323.0220
 EL. 699.845

TEMPORARY BENCHMARK "Z"

CHISELED CROSS ON THE NE'LY BOLT OF W'LY LIGHT POLE ±60 FT. NORTH OF N'LY EDGE OF SOUTHWEST HIGHWAY BRIDGE.
 N 1810394.3530
 E 1115239.3170
 EL. 678.745

TEMPORARY BENCHMARK "F"

SET RR SPIKE ON NE SIDE OF POWER POLE LOCATED WEST OF BITUMINOUS/GRAVEL DRIVEWAY, ±900 FT. E. OF LAGRANGE ROAD ±45 FT. SOUTH OF SOUTHWEST HIGHWAY.
 N 1810949.7535
 E 1115793.8830
 EL. 682.63

TEMPORARY BENCHMARK "G"

SQUARE CUT ON SW CORNER OF CONCRETE PAD IN FRONT OF DOOR LOCATED ON THE SW'LY SIDE OF BUILDING ±25' FT. NW'LY OF MOST S'LY CORNER OF BUILDING AT 13801 SOUTHWEST HIGHWAY.
 N 1811719.7226
 E 1116435.5171
 EL. 681.07

FILE NAME =	USER NAME = TKLuegel
D160N09-SHT-AT02.dgn	
PLOT SCALE = 1:100	
PLOT DATE = 12/29/2010	

DESIGNED -	BA	REVISED -	
DRAWN -	BA	REVISED -	
CHECKED -	MJT	REVISED -	
DATE -	12/17/10	REVISED -	

STATE OF ILLINOIS	ALIGNMENT TIES AND BENCHMARKS
DEPARTMENT OF TRANSPORTATION	
SCALE: 1"=100'	SHEET NO. 2 OF 2 SHEETS
STA.	TO STA.

F.A.P. RTE.	SECTION	COUNTY	TOTAL SHEETS	SHEET NO.
330	2010-135-1	COOK	101	15
AT-02		CONTRACT NO. 60N09		
ILLINOIS FED. AID PROJECT				

STATE OF ILLINOIS	ALIGNMENT TIES AND BENCHMARKS
DEPARTMENT OF TRANSPORTATION	
SCALE: 1"=100'	SHEET NO. 2 OF 2 SHEETS
STA.	TO STA.

F.A.P. RTE.	SECTION	COUNTY	TOTAL SHEETS	SHEET NO.
330	2010-135-1	COOK	101	15
AT-02		CONTRACT NO. 60N09		
ILLINOIS FED. AID PROJECT				