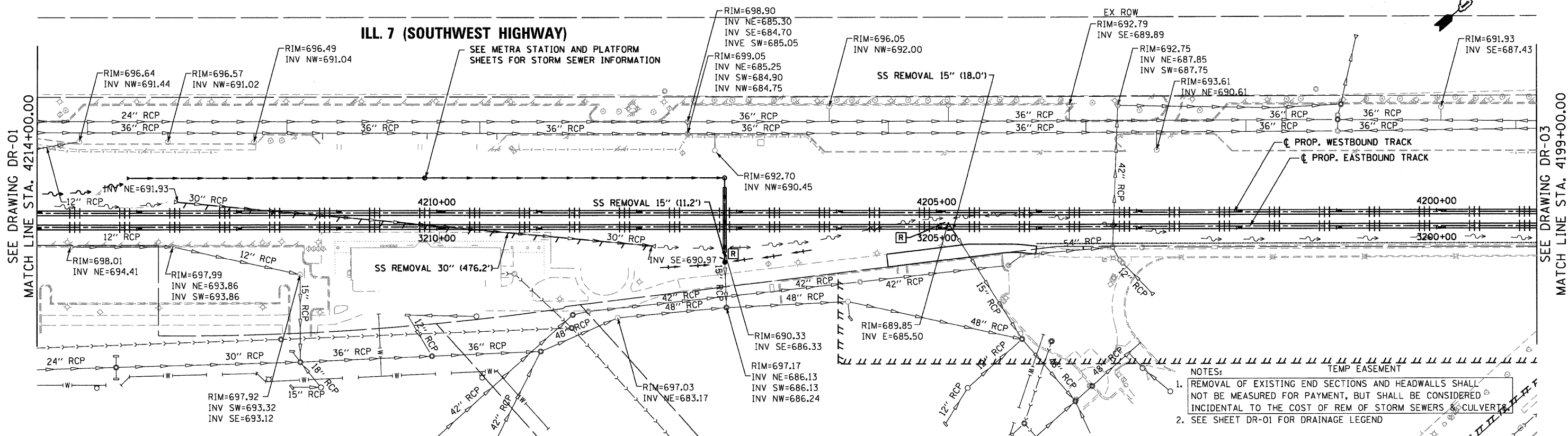
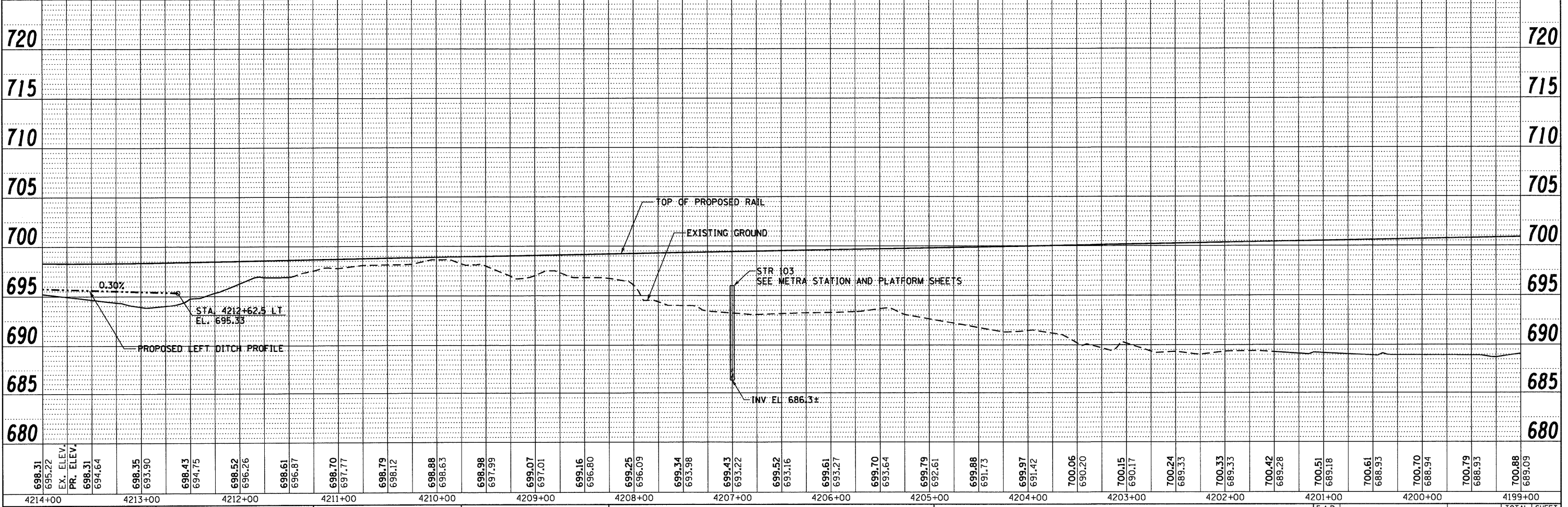


ILL. 7 (SOUTHWEST HIGHWAY)



- NOTES:
- REMOVAL OF EXISTING END SECTIONS AND HEADWALLS SHALL NOT BE MEASURED FOR PAYMENT, BUT SHALL BE CONSIDERED INCIDENTAL TO THE COST OF REM OF STORM SEWERS & CULVERTS.
 - SEE SHEET DR-01 FOR DRAINAGE LEGEND



698.31	695.22	698.35	698.43	698.52	698.61	698.70	698.79	698.88	698.98	699.07	699.16	699.25	699.34	699.43	699.52	699.61	699.70	699.79	699.88	700.06	700.15	700.24	700.33	700.42	700.51	700.61	700.70	700.79	700.88		
4214+00	4213+00	4212+00	4211+00	4210+00	4209+00	4208+00	4207+00	4206+00	4205+00	4204+00	4203+00	4202+00	4201+00	4200+00	4199+00																

PLAN

ENGINEER	DATE
NOTED	
CHECKED	
PLOTTED	
FILE NAME	

PROFILE

ENGINEER	DATE
NOTED	
CHECKED	
PLOTTED	
FILE NAME	

McDonough Associates Inc.
 Engineers/Architects
 130 East Randolph Street, Chicago, Illinois 60601

STATE OF ILLINOIS
DEPARTMENT OF TRANSPORTATION

DRAINAGE AND UTILITIES PLAN AND PROFILE

F.A.P. RTE.	SECTION	COUNTY	TOTAL SHEETS	SHEET NO.
330	2010-135-I	COOK	101	33
DR-02		CONTRACT NO. 60N09		
ILLINOIS FED. AID PROJECT				

SCALE: 1"=50'H H1"=5'V SHEET NO. 2 OF 4 SHEETS STA. TO STA.

FILE NAME = D:\60N09-SHT-DRAIN02.dgn	USER NAME = TKluegel	DESIGNED - MJT	REVISED -
		DRAWN - MJT	REVISED -
		CHECKED - JWM	REVISED -
		DATE - 12/17/10	REVISED -