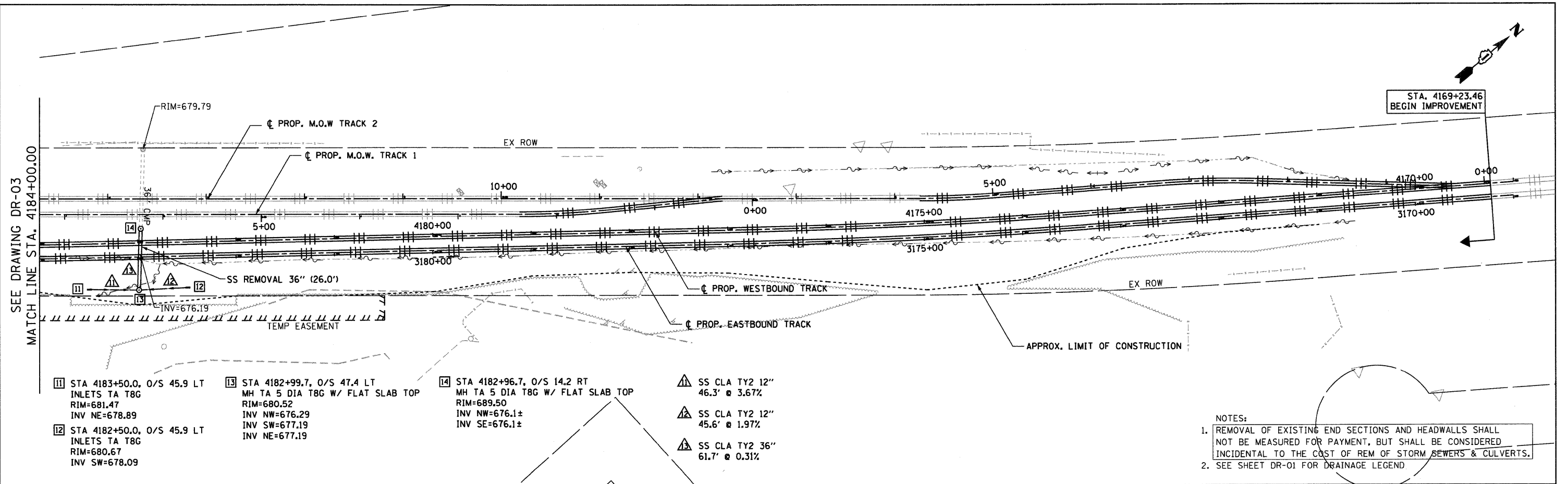


DATE	
BY	
REVISIONS	
PLAN	ENGINEER
	NOTED
	ALIGNED
	CHECKED
	FILE NAME

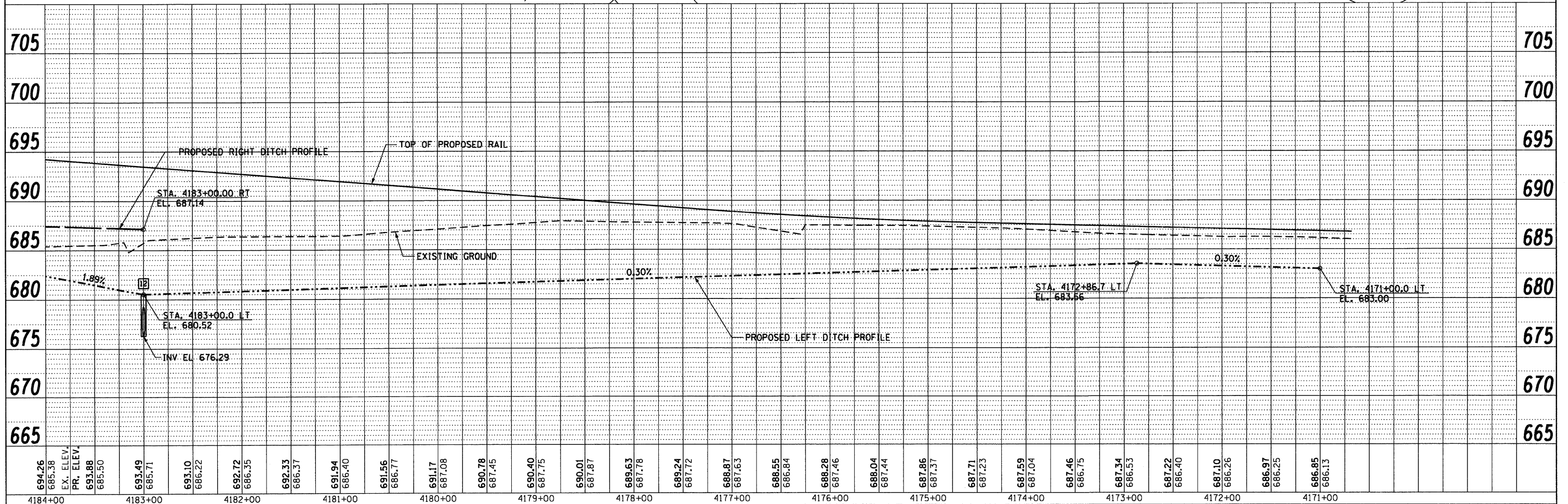
DATE	
BY	
REVISIONS	
PROFILE	ENGINEER
	NOTED
	GRADES
	CHECKED
	FILE NAME

McDonough Associates Inc.
 Engineers/Architects
 130 East Randolph Street, Chicago, Illinois 60601



- 11 STA 4183+50.0, O/S 45.9 LT
INLETS TA T8G
RIM=681.47
INV NE=678.89
- 12 STA 4182+50.0, O/S 45.9 LT
INLETS TA T8G
RIM=680.67
INV SW=678.09
- 13 STA 4182+99.7, O/S 47.4 LT
MH TA 5 DIA T8G W/ FLAT SLAB TOP
RIM=680.52
INV NW=676.29
INV SW=677.19
INV NE=677.19
- 14 STA 4182+96.7, O/S 14.2 RT
MH TA 5 DIA T8G W/ FLAT SLAB TOP
RIM=689.50
INV NW=676.1±
INV SE=676.1±
- SS CLA TY2 12"
46.3' @ 3.67%
- SS CLA TY2 12"
45.6' @ 1.97%
- SS CLA TY2 36"
61.7' @ 0.31%

- NOTES:
- REMOVAL OF EXISTING END SECTIONS AND HEADWALLS SHALL NOT BE MEASURED FOR PAYMENT, BUT SHALL BE CONSIDERED INCIDENTAL TO THE COST OF REM OF STORM SEWERS & CULVERTS.
 - SEE SHEET DR-01 FOR DRAINAGE LEGEND



FILE NAME = D:\0209-SHT-DRAIN\04.dgn	USER NAME = TKIuegel	DESIGNED - MJT	REVISED -	STATE OF ILLINOIS DEPARTMENT OF TRANSPORTATION	DRAINAGE AND UTILITIES PLAN AND PROFILE	F.A.P. RTE. 330	SECTION 2010-135-I	COUNTY COOK	TOTAL SHEETS 101	SHEET NO. 35		
PLOT SCALE = 1/8"=1'	PLOT DATE = 12/29/2018	DRAWN - MJT	REVISED -			SCALE: 1"=50'H/1"=5'V	SHEET NO. 4 OF 4 SHEETS	STA.	TO STA.	CONTRACT NO. 60N09		
CHECKED - JWM	DATE - 12/17/10	REVISOR -	REVISOR -			ILLINOIS FED. AID PROJECT						