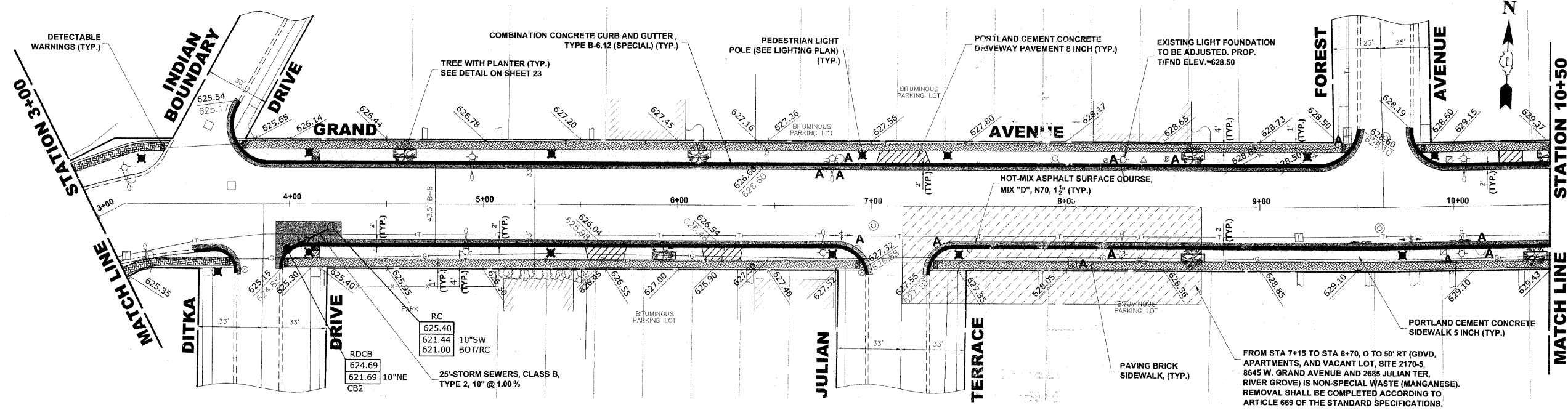


EXISTING TOPOGRAPHY



NOTE:
 USE PORTLAND CEMENT CONCRETE BASE COURSE, 6" UNDER PAVING BRICK SIDEWALK, WHERE BRICK SIDEWALK BUTTS AGAINST CURB AND FOR PORTIONS OF SIDEWALK WITH KEYSTONE AND CROSS-WALKS. EXACT LOCATIONS TO BE DETERMINED BY ENGINEER IN FIELD.

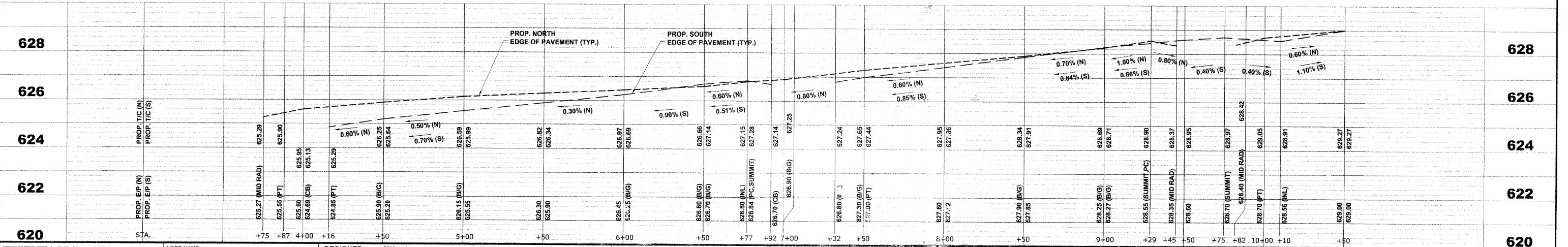
USE PORTLAND CEMENT CONCRETE BASE COURSE, 8" UNDER PAVING BRICK SIDEWALK, WHERE BRICK SIDEWALKS CROSS DRIVEWAY PAVEMENTS. EXACT LOCATIONS TO BE DETERMINED BY ENGINEER IN FIELD.

ALL CONNECTIONS, INCLUDING CORE CONNECTIONS TO EXISTING STRUCTURES SHALL BE WATERTIGHT PER ASTM C-923.

SEE LEGEND ON SHEET 2 FOR SYMBOL DESCRIPTION.

AT INTERSECTIONS, ANY THERMOPLASTIC PAVEMENT MARKINGS THAT ARE DISTURBED DUE TO THE INSTALLATION OF CURB REPLACEMENT AND RESULTANT PAVEMENT PATCH, WILL BE REPLACED IN KIND.

PROPOSED IMPROVEMENT



D:\Projects\76010007 - Grand Ave Streetscape Stage II\GRAND AVE.dwg Jan 10, 2011 - 1:04pm

HANCOCK ENGINEERING
 Civil Engineers
 Municipal Consultants
 Established 1911

USER NAME -	DESIGNED - MK	REVISED - 1-5-11 IDOT FINAL
PLOT SCALE -	DRAWN - MK/LEV	REVISED - 6-28-10 IDOT PRE-FINAL
PLOT DATE -	CHECKED - CB	REVISED - 6-04-10 IDOT PSE
	DATE - 03-02-10	REVISED - 3-19-10 MWRDGC

STATE OF ILLINOIS DEPARTMENT OF TRANSPORTATION

GRAND AVENUE STREETSCAPE STAGE II PLAN AND PROFILE
 SCALE: 1"= 30' H, 2"V. SHEET NO. 2 OF 6 SHEETS STA. 3+00 TO STA. 10+50

F.A.U. RTE. 1376	SECTION 10-0095-00-SW	COUNTY COOK	TOTAL SHEETS 29	SHEET NO. 9
(FIELD BOOK NOS. 1441/1443/1516)		CONTRACT NO. 63511		
FED. ROAD DIST. NO. 1	ILLINOIS	FED. AID PROJECT	TE-001(823)	

E.H.E PROJECT NO. 760-10-00720