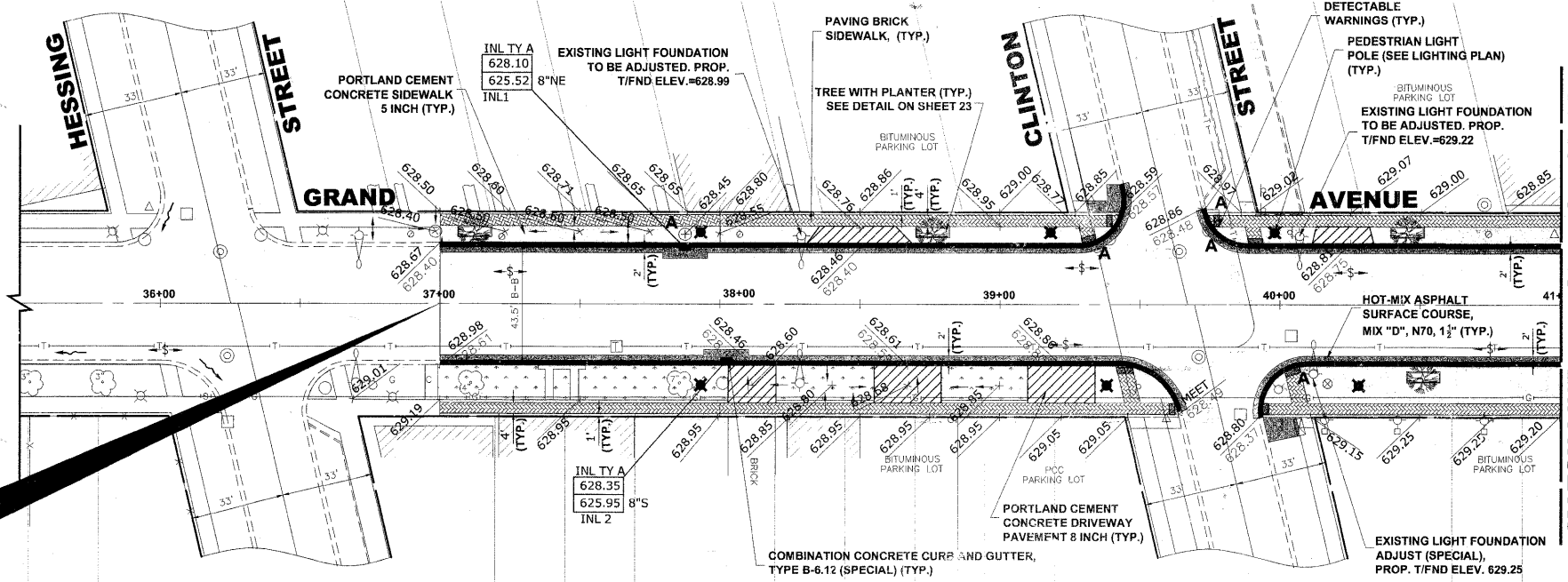


EXISTING TOPOGRAPHY



PROPOSED IMPROVEMENT



NOTE:

USE PORTLAND CEMENT CONCRETE BASE COURSE, 6" UNDER PAVING BRICK SIDEWALK, WHERE BRICK SIDEWALK BUTTS AGAINST CURB AND FOR PORTIONS OF SIDEWALK WITH KEYSTONE AND CROSS-WALKS. EXACT LOCATIONS TO BE DETERMINED BY ENGINEER IN FIELD.

USE PORTLAND CEMENT CONCRETE BASE COURSE, 8" UNDER PAVING BRICK SIDEWALK, WHERE BRICK SIDEWALKS CROSS DRIVEWAY PAVEMENTS. EXACT LOCATIONS TO BE DETERMINED BY ENGINEER IN FIELD.

ALL CONNECTIONS, INCLUDING CORE CONNECTIONS TO EXISTING STRUCTURES SHALL BE WATERTIGHT PER ASTM C-923.

SEE LEGEND ON SHEET 2 FOR SYMBOL DESCRIPTION.

AT INTERSECTIONS, ANY THERMOPLASTIC PAVEMENT MARKINGS THAT ARE DISTURBED DUE TO THE INSTALLATION OF CURB REPLACEMENT AND RESULTANT PAVEMENT PATCH, WILL BE REPLACED IN KIND.

| STA. | PROP. E.P. (N) PROP. E.P. (S) | PROP. T.I.C. (N) PROP. T.I.C. (S) | PROP. SOUTH EDGE OF PAVEMENT (TYP.) | PROP. NORTH EDGE OF PAVEMENT (TYP.) | | |
|------|----------------------------------|--------------------------------------|--|--|--|-----|
| 628 | | | 0.40% (N) 0.36% (S) | 0.40% (N) 0.40% (S) | | 628 |
| 626 | | | 0.50% (S) | 1.25% (N) | | 626 |
| 624 | | | 0.40% (N) 0.36% (S) | 0.40% (N) 0.36% (S) | | 624 |
| 622 | | | 0.40% (N) 0.33% (S) | 0.40% (N) 0.52% (S) | | 622 |
| 620 | | | | | | 620 |

Drawing File: \\Projects\16010037 - Grand Ave Streetscape Stage II\GRAND AVE.dwg Jan 10, 2011 - 1:04pm

HANCOCK ENGINEERING
 Civil Engineers
 Municipal Consultants
 Established 1911

USER NAME -
 PLOT SCALE -
 PLOT DATE -

DESIGNED - MK
 DRAWN - MK/LEV
 CHECKED - CB
 DATE - 03-02-10

REVISED - 1-5-11 IDOT FINAL
 REVISED - 6-28-10 IDOT PRE-FINAL
 REVISED - 6-04-10 IDOT PSE
 REVISED - 3-19-10 MWRDGC

**STATE OF ILLINOIS
 DEPARTMENT OF TRANSPORTATION**

**GRAND AVENUE STREETScape STAGE II
 PLAN AND PROFILE**

SCALE: 1"=30' H.2V. SHEET NO. 4 OF 6 SHEETS STA. 37+00 TO STA. 41+00

| | | | | |
|----------------------------------|------------------------|--------------------|-----------------|--------------|
| F.A.U. RTE. 1376 | SECTION 10-00095-00-SW | COUNTY COOK | TOTAL SHEETS 29 | SHEET NO. 11 |
| (FIELD BOOK NOS. 1441/1443/1516) | | CONTRACT NO. 63511 | | |
| FED. ROAD DIST. NO. 1 | ILLINOIS | FED. AID PROJECT | TE-00D1(823) | |

E.H.E. PROJECT NO. 760-10-00720