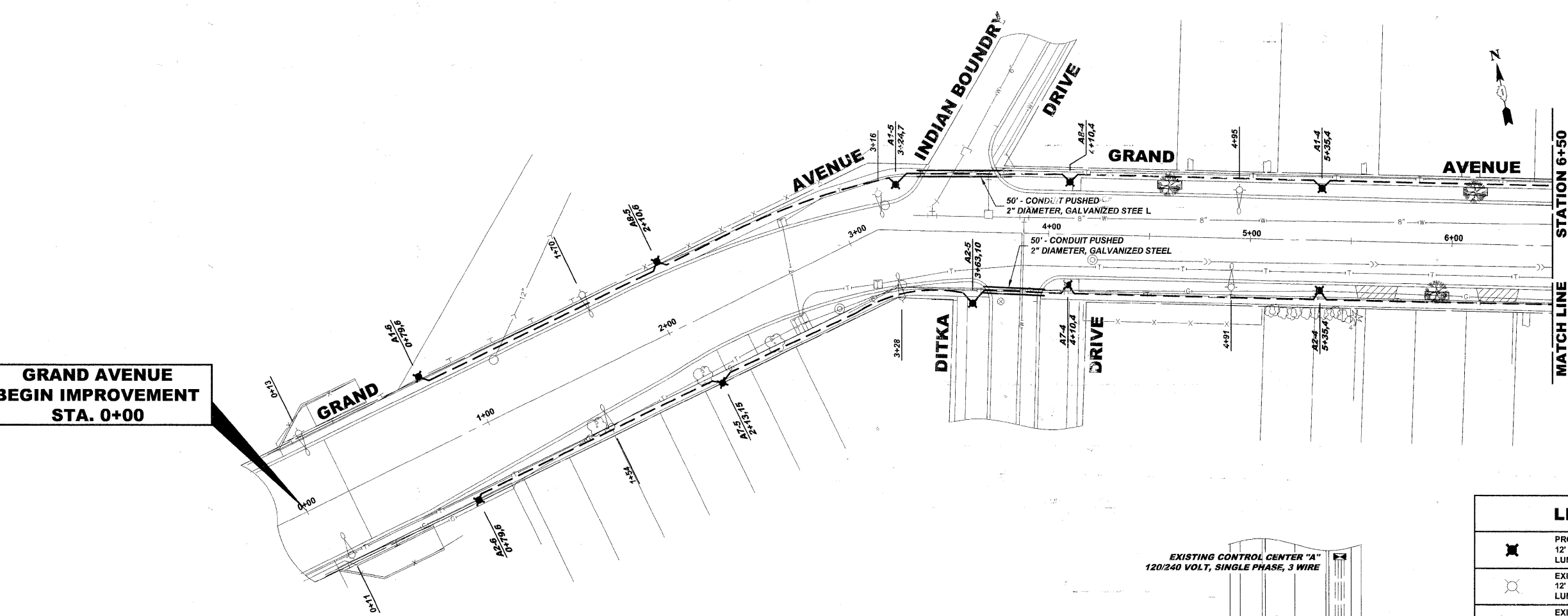
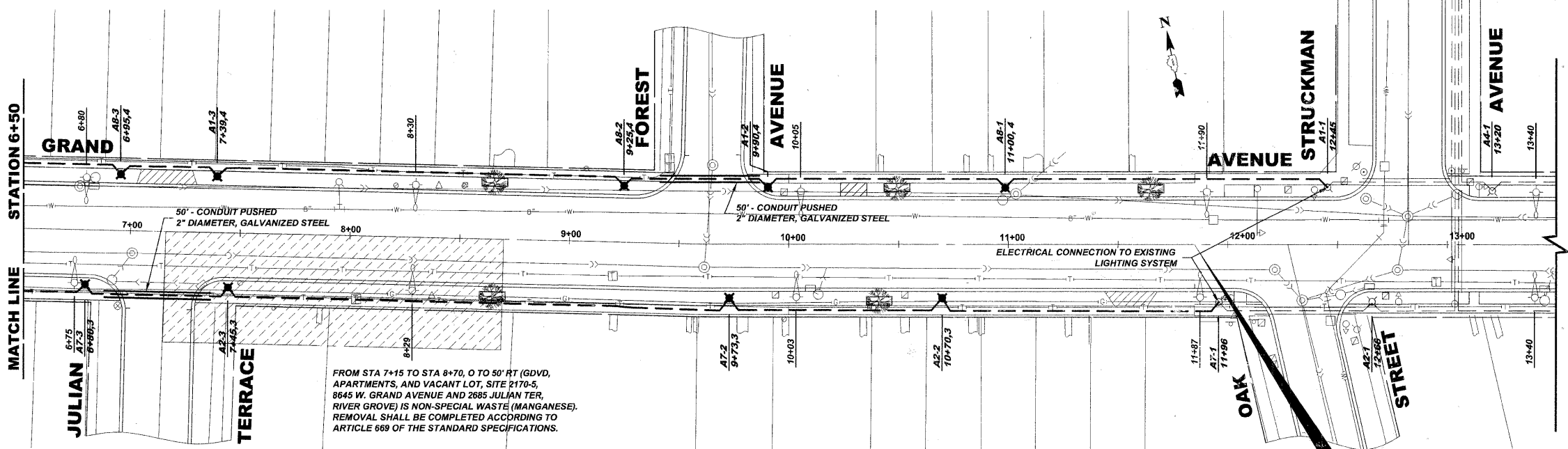


Drawing file: W:\Projects\76010007 - Grand Ave Streetscape Stage II\Grand Ave-Lighting.dwg Jan 10, 2011 - 1:06pm

**GRAND AVENUE
BEGIN IMPROVEMENT
STA. 0+00**



MATCH LINE
STATION 6+50



**GRAND AVENUE
OMISSION BEGINS
STA. 11+85**

LEGEND OF SYMBOLS	
	PROPOSED DECORATIVE LIGHT POLE, ALUMINUM, 12' MOUNTING HEIGHT WITH DECORATIVE ACORN STYLE LUMINAIRE, SODIUM VAPOR, TENON MOUNT, 70 WATT, 120 VOLT
	EXISTING DECORATIVE LIGHT POLE, ALUMINUM, 12' MOUNTING HEIGHT WITH DECORATIVE ACORN STYLE LUMINAIRE, SODIUM VAPOR, TENON MOUNT, 70 WATT, 120 VOLT
	EXISTING 35' MOUNTING HEIGHT POLE WITH 8' MAST ARM AND 310 WATT HIGH PRESSURE SODIUM LAMP (GE451002.IES)
	PROPOSED UNIT DUCT WITH 3-1/2" No. 4 & 1-1/2" No. 6 GROUND, 600V (XLP-TYPE USE), 1 1/2" DIAMETER, BORED & PULLED OR AS NOTED
	EXISTING UNIT DUCT WITH 3-1/2" No. 4 & 1-1/2" No. 6 GROUND, 600V (XLP-TYPE USE), 1 1/2" DIAMETER
	PROPOSED RIGID GALVANIZED STEEL CONDUIT IN TRENCH OR PUSHED AS NOTED
	CONTROLLER IDENTIFICATION (TYP.)
	CIRCUIT NUMBER (TYP.)
	POLE NUMBER (TYP.)
	SET BACK FROM BACK OF CURB (TYP.)
	STATION NUMBER (TYP.)

HANCOCK ENGINEERING
 Civil Engineers
 Municipal Consultants
 Established 1911

USER NAME -	DESIGNED - MK	REVISED - 1-5-11 IDOT FINAL
PLOT SCALE -	DRAWN - MK/LEV	REVISED - 6-28-10 IDOT PRE-FINAL
PLOT DATE -	CHECKED - CB	REVISED - 6-04-10 IDOT PSE
	DATE - 03-02-10	REVISED - 3-19-10 MWRDGC

**STATE OF ILLINOIS
DEPARTMENT OF TRANSPORTATION**

**GRAND AVENUE STREETSCAPE STAGE II
LIGHTING PLAN**

SCALE: 1" = 30' SHEET NO. 1 OF 3 SHEETS STA. 0+00 TO STA. 11+85

F.A.U. RTE.	SECTION	COUNTY	TOTAL SHEETS	SHEET NO.
1376	10-00095-00-SW	COOK	29	16
(FIELD BOOK NOS. 1441/1443/1516)		CONTRACT NO. 63511		
FED. ROAD DIST. NO. 1	ILLINOIS	FED. AID PROJECT	TE-00D1(823)	

E.H.E PROJECT NO. 760-10-00720