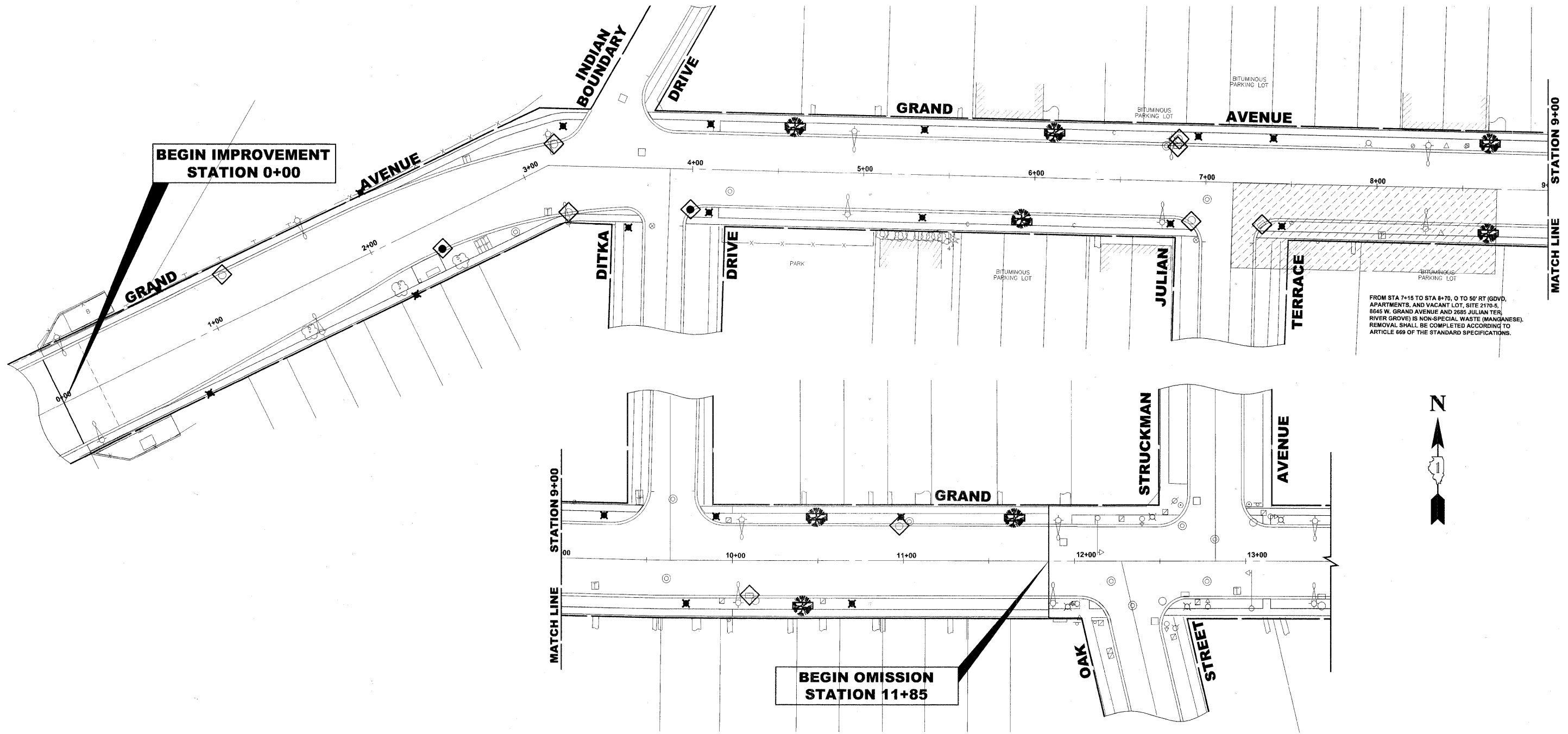


Drawing file: W:\Projects\7810007 - Grand Ave Streetscape Stage II\91_Landscaping_Grand.dwg Jan 05, 2011 - 10:59am



FROM STA 7+15 TO STA 8+70, 0 TO 55' RT (GDVD, APARTMENTS, AND VACANT LOT, SITE 2170-5, 8045 W. GRAND AVENUE AND 2685 JULIAN TER, RIVER GROVE) IS NON-SPECIAL WASTE (MANGANESE). REMOVAL SHALL BE COMPLETED ACCORDING TO ARTICLE 609 OF THE STANDARD SPECIFICATIONS.

NOTES

1. SEE IDOT STANDARD 280001-05 FOR TEMPORARY EROSION CONTROL.
2. THE CONTRACTOR SHALL ENSURE THAT ADJACENT PROPERTIES REMAIN PROTECTED FROM SEDIMENT DEPOSITION.
3. SOIL STOCKPILES SHALL BE PROTECTED WITH PERIMETER EROSION BARRIER OR OTHER EROSION PROTECTION SPECIFIED BY THE RESIDENT ENGINEER. THE COST SHALL BE INCLUDED IN THE UNIT PRICE FOR THE INDIVIDUAL SOIL MATERIALS.
4. WHEREVER CONSTRUCTION VEHICLE ACCESS ROUTES INTERSECT PAVED ROADS, PROVISIONS SHALL BE MADE TO MINIMIZE THE TRANSPORT OF SEDIMENT BY RUNOFF OR VEHICLE TRACKING ONTO THE PAVED SURFACE. THE PROVISIONS MAY INCLUDE SPRAYING VEHICLE WHEELS TO CLEAR SEDIMENT BEFORE EXITING THE CONSTRUCTION SITE OR OTHER MEASURES APPROVED BY THE ENGINEER.

LEGEND OF SYMBOLS

SYMBOL	DESCRIPTION
◊	INLET FILTER

HANCOCK ENGINEERING
 Civil Engineers
 Municipal Consultants
 Established 1911

USER NAME -	DESIGNED - MK	REVISED - 1-5-11 IDOT FINAL
	DRAWN - MK/LEV	REVISED - 6-28-10 IDOT PRE-FINAL
PLOT SCALE -	CHECKED - CB	REVISED - 6-04-10 IDOT PSE
PLOT DATE -	DATE - 03-02-10	REVISED - 3-19-10 MWRDGC

**STATE OF ILLINOIS
 DEPARTMENT OF TRANSPORTATION**

**GRAND AVENUE STREETSCAPE STAGE II
 EROSION CONTROL PLAN**

SCALE: 1"=30' SHEET NO. 1 OF 2 SHEETS STA. TO STA.

F.A.U. RTE.	SECTION	COUNTY	TOTAL SHEETS	SHEET NO.
1376	10-00095-00-SW	COOK	29	24
(FIELD BOOK NOS. 1441/1443/1516)		CONTRACT NO. 63511		
FED. ROAD DIST. NO. 1	ILLINOIS	FED. AID PROJECT	TE-00D1(823)	

E.H.E PROJECT NO. 760-10-00720