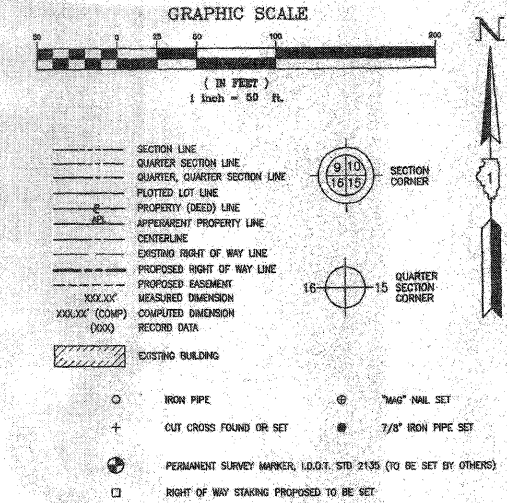


PLAT OF EASEMENT

PART OF THE NORTHEAST QUARTER OF SECTION 28, TOWNSHIP 38 NORTH, RANGE 6 EAST OF THE THIRD PRINCIPAL MERIDIAN, IN KANE COUNTY, ILLINOIS



BASIS OF BEARINGS: ILLINOIS STATE PLANE COORDINATE SYSTEM, EAST ZONE (NAD83, 1997)
ALL DIMENSIONS SHOWN HEREON ARE NAD83(1997)(GROUND)

PARCEL NUMBER	OWNER	TOTAL HOLDINGS ACRES	EASEMENT AREA ACRES	EASEMENT PURPOSE	PERMANENT INDEX NUMBER	PROPERTY ACQUIRED BY
0001 PE	BNSF RAILROAD	16	0.805	RECREATION PATH	15-28-501-006	
0001 TE	BNSF RAILROAD	16	0.161	CONSTRUCTION	15-28-501-006	

CENTERLINE CURVE DATA

C1	C3	C5
P.C. = STA. 23+81.66 PI = STA. 24+57.67 P.T. = STA. 25+34.08 DELTA = 67°16'49" D = 5717.44' T = 95.45' L = 152.42' R = 100.00'	P.C. = STA. 27+58.26 PI = STA. 27+34.41 P.T. = STA. 28+10.57 DELTA = 6°39'37" D = 12'43.56" T = 28.18' L = 52.31' R = 450.00'	P.C. = STA. 30+31.45 PI = STA. 30+42.03 P.T. = STA. 30+52.60 DELTA = 4°02'22" D = 0'41.28" T = 10.58' L = 21.15' R = 300.00'
C2	C4	C6
P.C. = STA. 26+67.07 PI = STA. 26+31.32 P.T. = STA. 27+15.57 DELTA = 27°47'18" D = 5717.43' T = 24.74' L = 48.50' R = 100.00'	P.C. = STA. 28+10.57 PI = STA. 28+22.58 P.T. = STA. 28+34.61 DELTA = 48°09'05" D = 5717.44' T = 44.68' L = 84.04' R = 100.00'	P.C. = STA. 32+11 PI = STA. 32+16.66 P.T. = STA. 32+22.31 DELTA = 4°19'18" D = 3812.39' T = 5.86' L = 11.39' R = 150.00'

CERTIFICATION

STATE OF ILLINOIS }
COUNTY OF KANE } SS

THIS IS TO CERTIFY THAT WE, COMPASS LAND SURVEYING LTD., AN ILLINOIS PROFESSIONAL DESIGN FIRM LAND SURVEYING CORPORATION, NUMBER 184-002776, HAVE PLATTED THE EASEMENT SHOWN HEREON IN SECTION 28, TOWNSHIP 38 NORTH, RANGE 6 EAST OF THE THIRD PRINCIPAL MERIDIAN, KANE COUNTY, ILLINOIS, AND THAT THIS PLAT IS TRUE AND COMPLETE AS SHOWN TO THE BEST OF MY KNOWLEDGE AND BELIEF, THAT THE PLAT CORRECTLY REPRESENTS SAID EASEMENT, THAT ALL MONUMENTS FOUND AND ESTABLISHED ARE OF PERMANENT QUALITY AND OCCUPY THE POSITIONS SHOWN THEREON AND THAT THE MONUMENTS ARE SUFFICIENT TO ENABLE THE EASEMENT TO BE RETRACED. THIS PLAT WAS MADE FOR THE DEPARTMENT OF TRANSPORTATION, STATE OF ILLINOIS.

DATED AT AURORA, ILLINOIS THIS _____ DAY OF _____ 20____ A.D.

ILLINOIS PROFESSIONAL LAND SURVEYOR NO. 035-003565
LICENSE EXPIRATION DATE: NOVEMBER 30, 2008

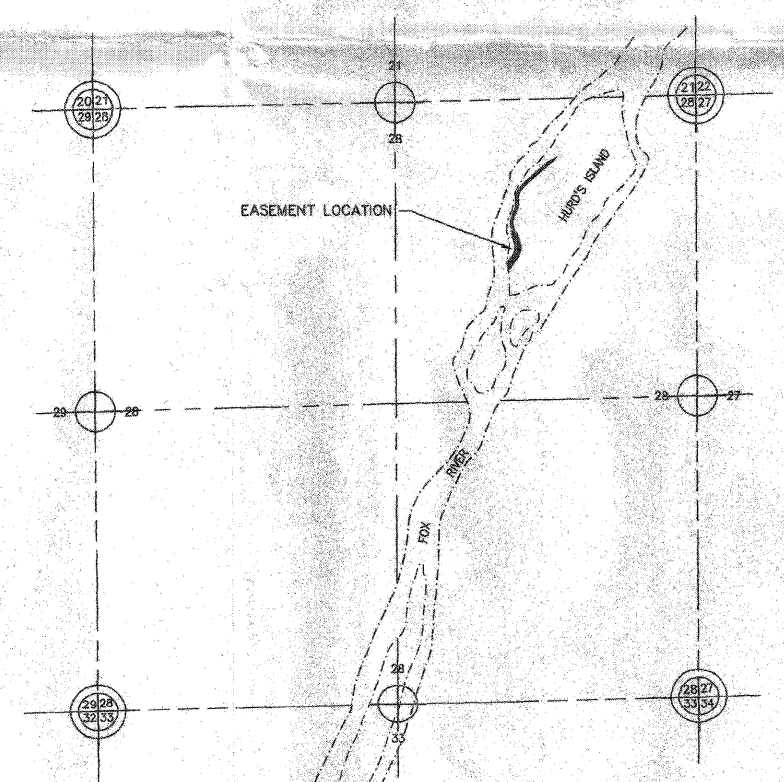
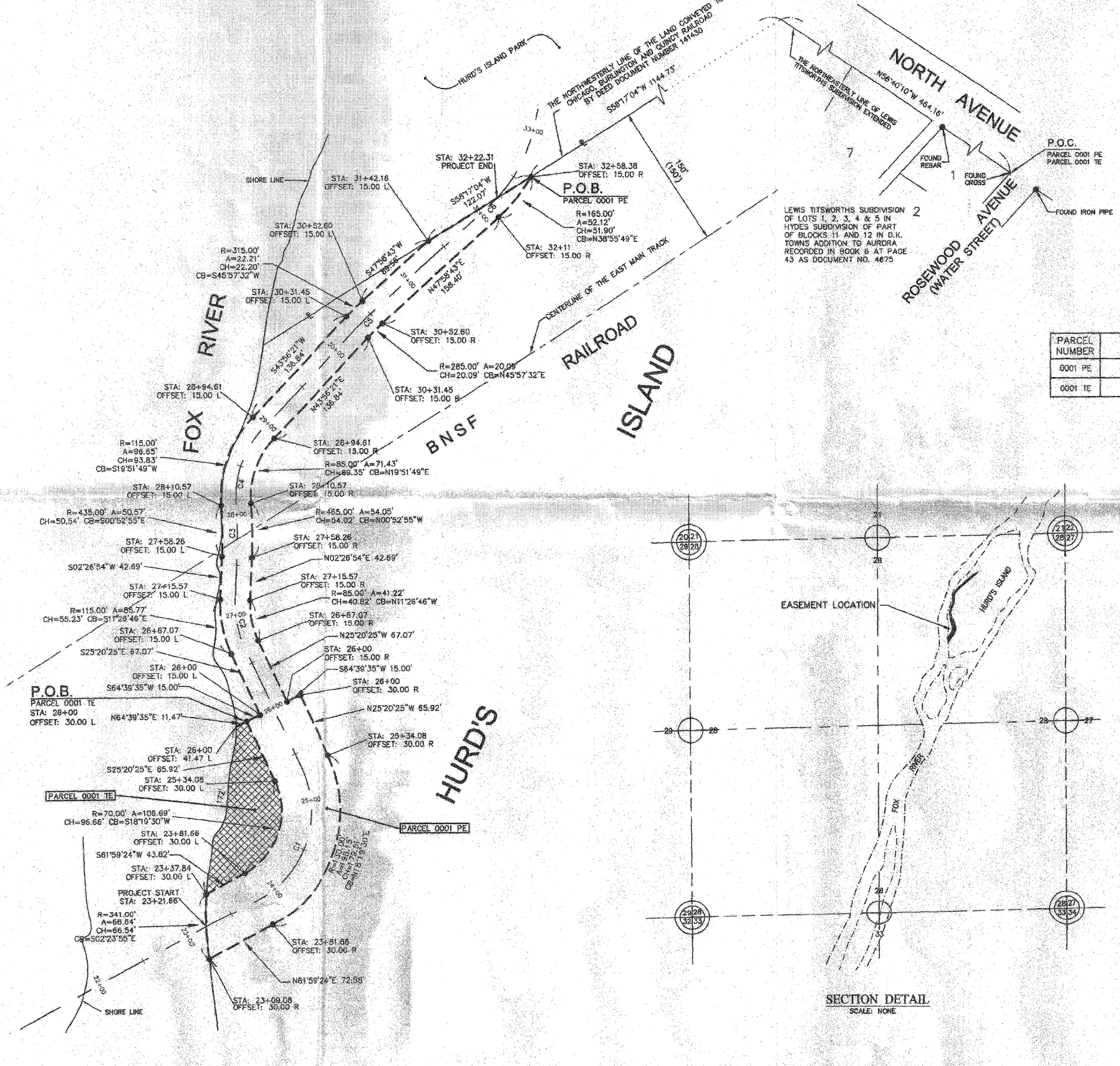
COMPASS LAND SURVEYING
2631 GENDER WOODS PARKWAY, STE. 100 - AURORA, IL 60002

PLAT OF EASEMENT
STATE OF ILLINOIS
DEPARTMENT OF TRANSPORTATION
FOX RIVER TRAIL

SECTION: COUNTY: KANE
PROJECT: JOB NO.:
STATION: 23 + 21.66 TO STATION: 32 + 22.31
SCALE: 1" = 50' SHEET 1 OF 1

BUREAU OF LAND ACQUISITION
201 WEST CENTER COURT
SCHAUMBURG, ILLINOIS 60196

DATE	REVISION	DESCRIPTION
5-20-08	LETTER DATED 5-13-08	



COUNTY: KANE JOB NO.

STATE OF ILLINOIS
DEPARTMENT OF TRANSPORTATION

PLAT OF EASEMENT
(BY OTHERS)

RTE.	SECTION	COUNTY	TOTAL SHEETS	SHEET NO.
	05-F3000-06-BT	KANE	58	9

SCALE: SHEET NO. 9 OF 58 SHEETS STA. TO STA. FED. ROAD DIST. NO. [ILLINOIS] FED. AID PROJECT

FILE NAME = P:\DBREL_WEST_Projects\52009\23140_FoxRiver\PHI\Civil\09\shah\PLA121.dgn
BY DATE
MADE CHECKED
NOTED
PLAT NOTEBOOK NO.

WILLS BURKE KELSEY ASSOCIATES LTD.
110 West Main Street, Suite 201
St. Charles, Illinois 60174
(630) 443-7755

USER NAME = #USER#	DESIGNED -	REVISED - 10/5/10
PLOT SCALE =	DRAWN -	REVISED -
PLOT DATE = 12/20/2010	CHECKED -	REVISED -
	DATE - 12/20/10	REVISED -

FOR REFERENCE ONLY