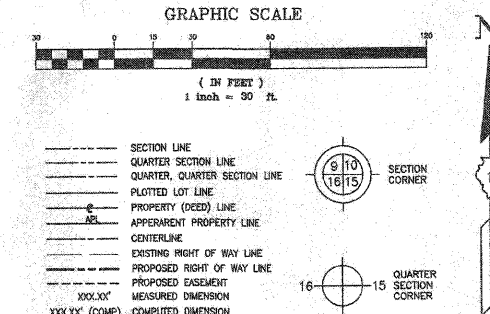


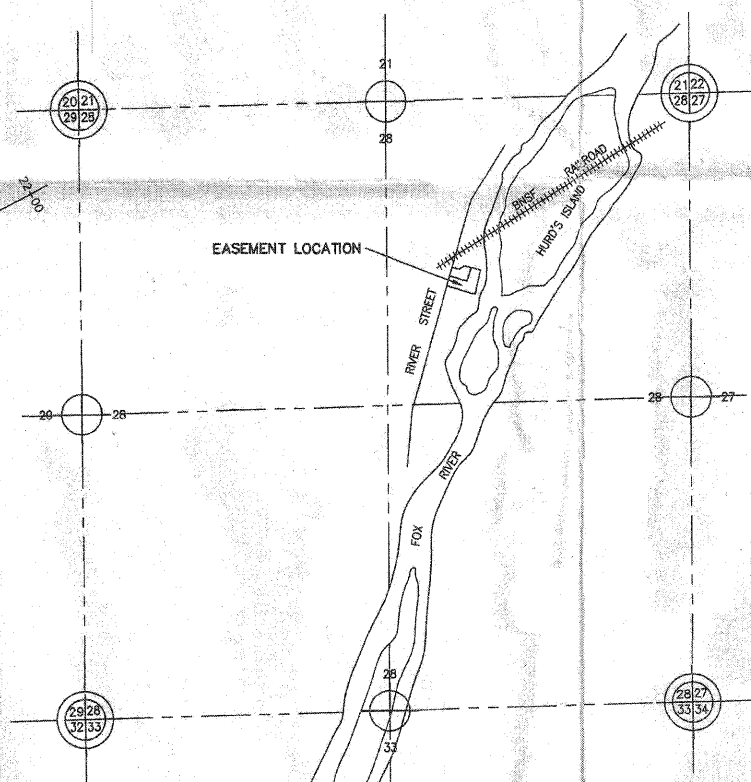
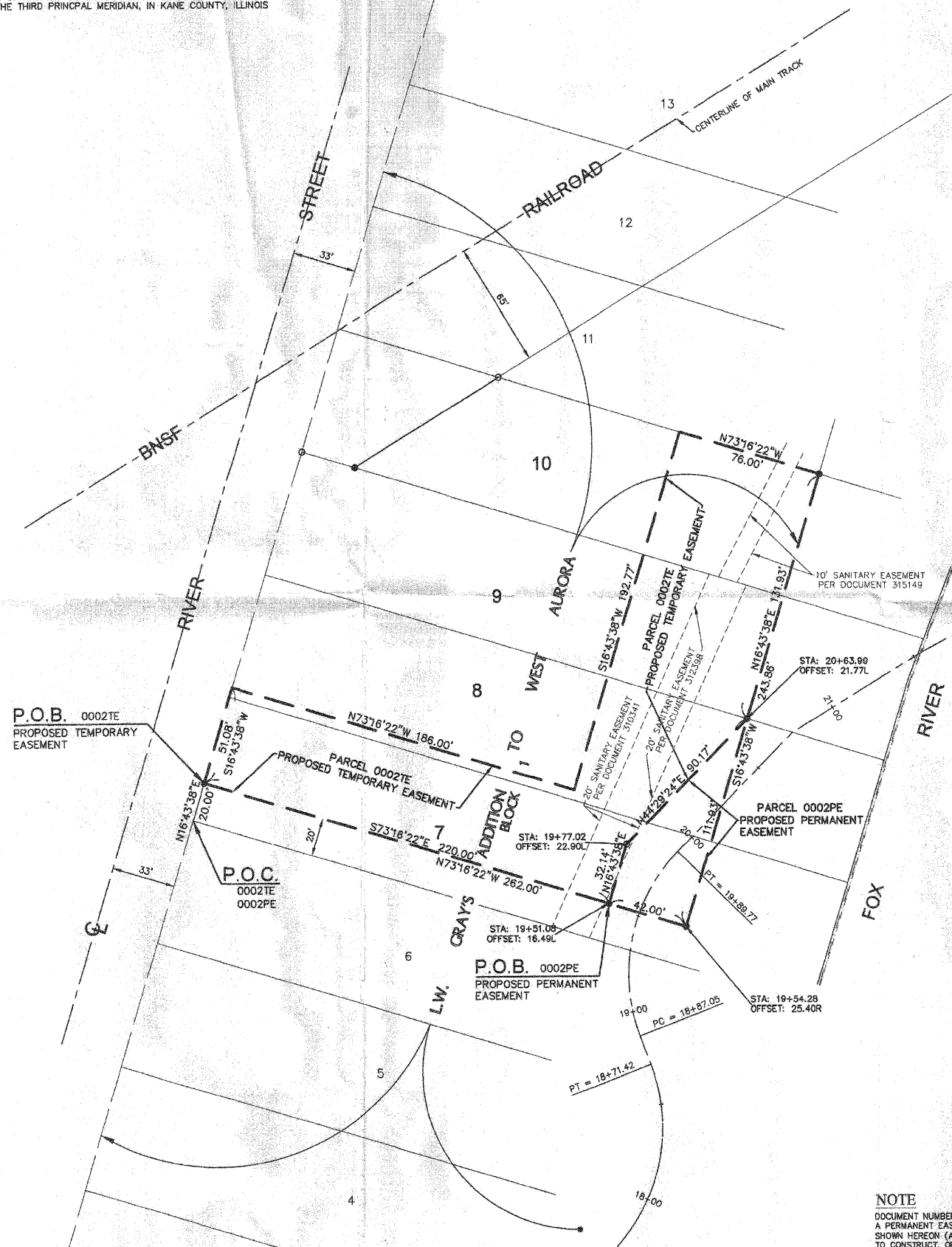
PLAT OF EASEMENT

PART OF THE NORTHEAST QUARTER OF SECTION 28, TOWNSHIP 38 NORTH, RANGE 8 EAST OF THE THIRD PRINCIPAL MERIDIAN, IN KANE COUNTY, ILLINOIS



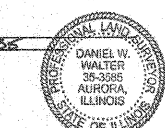
BASIS OF BEARINGS: ILLINOIS STATE PLANE COORDINATE SYSTEM, EAST ZONE (NAD83, 1997)
ALL DIMENSIONS SHOWN HEREON ARE NAD83(1997)(GROUND)

PARCEL NUMBER	OWNER	TOTAL HOLDINGS ACRES	EASEMENT AREA ACRES	EASEMENT PURPOSE	PERMANENT INDEX NUMBER	PROPERTY ACQUIRED BY
0002PE	CITY OF AURORA	1.379	0.069	RECREATION PATH	15-28-253-033	
0002TE	CITY OF AURORA	1.379	0.574	CONSTRUCTION	15-28-253-033	



CERTIFICATION
STATE OF ILLINOIS }
COUNTY OF KANE } SS
THIS IS TO CERTIFY THAT WE, COMPASS LAND SURVEYING LTD, AN ILLINOIS PROFESSIONAL DESIGN FIRM LAND SURVEYING CORPORATION, NUMBER 194-002778, HAVE PLATTED THE EASEMENT SHOWN HEREON IN SECTION 28, TOWNSHIP 38 NORTH, RANGE 8 EAST OF THE THIRD PRINCIPAL MERIDIAN, KANE COUNTY, ILLINOIS, AND THAT THIS PLAT IS TRUE AND COMPLETE AS SHOWN TO THE BEST OF MY KNOWLEDGE AND BELIEF, THAT THE PLAT CORRECTLY REPRESENTS SAID EASEMENT, THAT ALL MONUMENTS FOUND AND ESTABLISHED ARE OF PERMANENT QUALITY AND OCCUPY THE POSITIONS SHOWN THEREON AND THAT THE MONUMENTS ARE SUFFICIENT TO ENABLE THE EASEMENT TO BE RETRACED. THIS PLAT WAS MADE FOR THE DEPARTMENT OF TRANSPORTATION, STATE OF ILLINOIS.

DATED AT AURORA, ILLINOIS THIS 27TH DAY OF FEBRUARY 2010 A.D.
Daniel W. Walter
ILLINOIS PROFESSIONAL LAND SURVEYOR NO. 28205
LICENSE EXPIRATION DATE: NOVEMBER 30, 2010



COMPASS SURVEYING LTD
2551 GINGER WOODS PARKWAY, STE. 100
AURORA, IL 60502
PHONE: (630) 820-9100 FAX: (630) 820-7030
PROJECT NO. 9416.02

SECTION DETAIL
SCALE: NONE

DATE	REVISION DESCRIPTION
2-27-2009	PER IDOT COMMENTS

PLAT OF EASEMENT
STATE OF ILLINOIS
DEPARTMENT OF TRANSPORTATION
FOX RIVER TRAIL

SECTION: COUNTY: KANE
PROJECT: JOB NO.: R-55-001-97
STATION: 19+51.08 TO STATION: 20+63.99
SCALE: 1" = 30' SHEET 1 OF 1

BUREAU OF LAND ACQUISITION
201 WEST CENTER COURT
SCHAUMBURG, ILLINOIS 60196

NOTE
DOCUMENT NUMBER 1748409 RETAINS AND RESERVES A PERMANENT EASEMENT OVER LOTS 7, 8 AND 9 AS SHOWN HEREON (AND OTHER LAND), FOR THE RIGHT TO CONSTRUCT, OPERATE AND MAINTAIN A DAM.

COUNTY: KANE JOB NO.

BY	DATE
MADE	
CHECKED	
INRCD	

FILE NAME = P:\DBBEL WEST Projects\2009\23148 FoxRivTr-PhII\Civil\Qgn\shA\PLA102.dgn

WILLS BURKE KELSEY ASSOCIATES LTD.
116 West Main Street, Suite 201
St. Charles, Illinois 60174
(630) 443-7755

USER NAME = #USER#	DESIGNED -	REVISED - 10/5/10
PLOT SCALE =	DRAWN -	REVISED -
PLOT DATE = 12/20/2010	CHECKED -	REVISED -
	DATE - 12/20/10	REVISED -

STATE OF ILLINOIS DEPARTMENT OF TRANSPORTATION

PLAT OF EASEMENT (BY OTHERS)

SCALE: SHEET NO. 10 OF 58 SHEETS STA. TO STA.

RTE.	SECTION	COUNTY	TOTAL SHEETS	SHEET NO.
	05-F3000-06-BT	KANE	58	10

CONTRACT NO. 63517
FED. ROAD DIST. NO. ILLINOIS FED. AID PROJECT

FOR REFERENCE ONLY