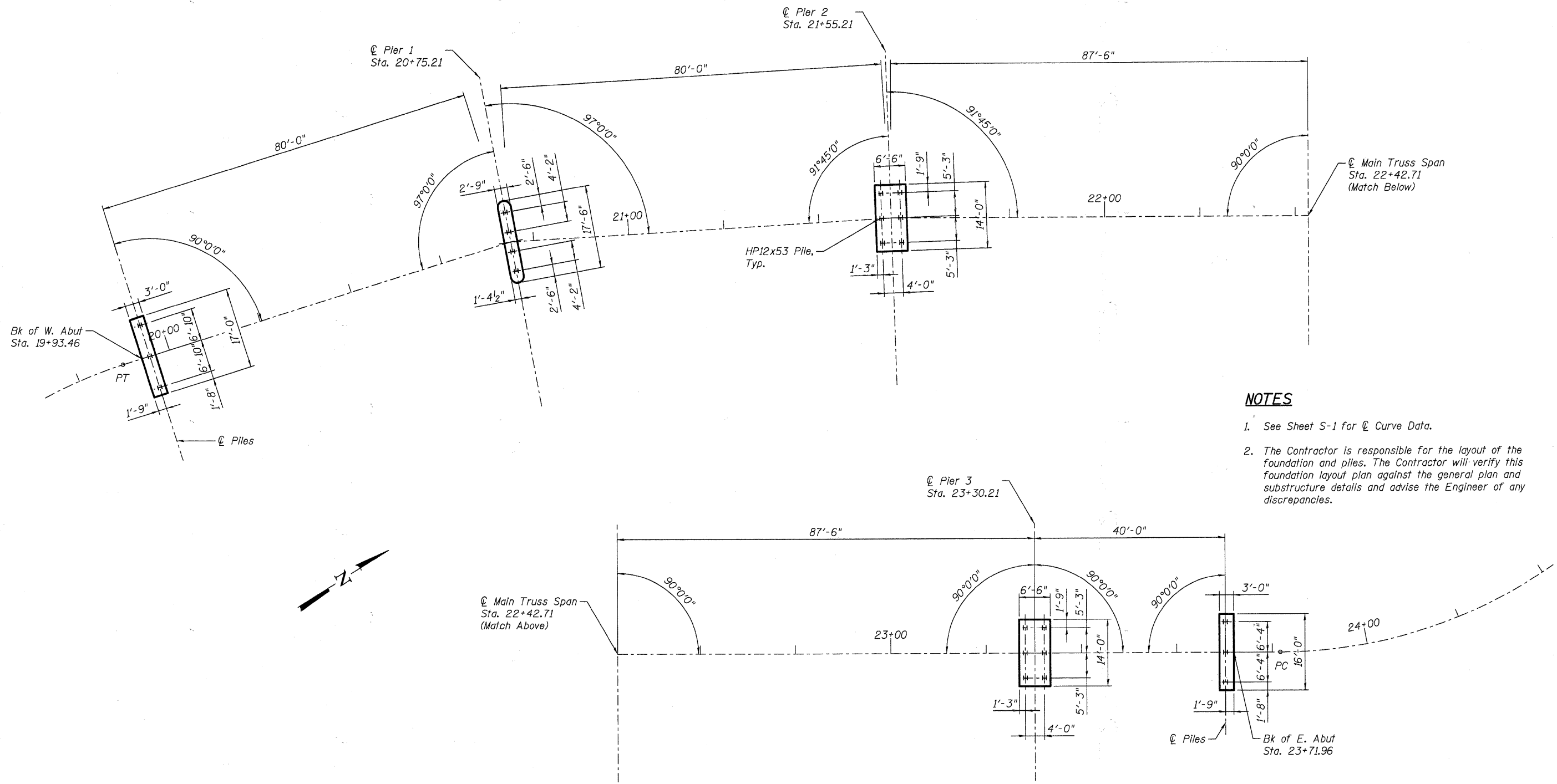


PLOT DATE = 12/20/2018  
 FILE NAME = F:\00BIBEL - WEST - Project\2009\1123140 - FoxRvr - Truss - Structural\03 - Final\Plans\BikeBridg - 005 - Found\Layout.dgn



- NOTES**
1. See Sheet S-1 for  $\phi$  Curve Data.
  2. The Contractor is responsible for the layout of the foundation and piles. The Contractor will verify this foundation layout plan against the general plan and substructure details and advise the Engineer of any discrepancies.

**FOUNDATION LAYOUT  
BICYCLE BRIDGE OVER FOX RIVER**

DESIGNED	-	DLS
CHECKED	-	AEU
DRAWN	-	AWH
CHECKED	-	DLS


**WILLS BURKE KELSEY ASSOCIATES LTD.**  
 116 West Main Street, Suite 201  
 St. Charles, Illinois 60174  
 (630) 443-7755

SHEET NO. 5  
 24 SHEETS

F.A.U. RTE.	SECTION	COUNTY	TOTAL SHEETS	SHEET NO.
	05-F3000-06-BT	KANE	58	26
CONTRACT NO. 63517				
FED. ROAD DIST. NO.	ILLINOIS	FED. AID PROJECT		