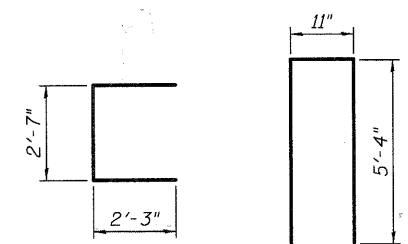
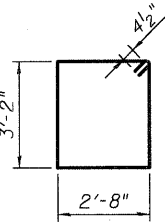


**SECTION THRU ABUTMENT**

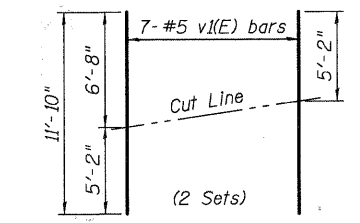


**BAR u(E) BAR v(E)**

**PILE DATA**  
 Type: Steel HP 12x53  
 Nominal Required Bearing: Set in Rock  
 Allowable Resistance Available: 140 kips  
 Est. Length: 15 ft.  
 No. Production Piles: 3  
 No. Test Piles: 0  
 Estimated Top of Rock Elevation: Elev. 613.60  
 Rock Socket Diameter: 1'-6"  
 Rock Socket Depth: 10.0 ft.



**BAR s(E)**



**FIELD CUTTING DIAGRAM**

Order v(E) bars full length. Cut as shown and use remainder of bars in opposite face.

**WEST ABUTMENT  
BILL OF MATERIAL**

Bar	No.	Size	Length	Shape
h(E)	8	#5	16'-8"	—
h(E)	40	#5	9'-3"	—
p(E)	12	#7	16'-8"	—
s(E)	18	#4	12'-5"	□
u(E)	8	#6	7'-1"	┌
v(E)	18	#5	11'-7"	—
v(E)	14	#5	11'-10"	—
Structure Excavation		Cu. Yd.	35	
Concrete Structures		Cu. Yd.	12.5	
Concrete Encasement		Cu. Yd.	1.1	
Reinforcement Bars, Epoxy Coated		Pound	1,560	
Furnishing Steel Piles, HP 12x53		Foot	45	
Setting Piles in Rock		Each	3	
Concrete Sealer		Sq. Ft.	188	

**NOTES**

- Height of abutment backwall is dependent on Pedestrian Truss Superstructure geometry. Backwall height shall be adjusted accordingly with approval of the Engineer. The abutment backwall elevation shall not be adjusted.
- The abutment seat elevation(s) shall be coordinated with the Contractor and the requirements of the Pedestrian Truss Superstructure with approval from the Engineer.
- All bearing assemblies are to be supplied by the Pedestrian Truss Superstructure fabricator. All bearing assemblies shall conform to IDOT standards and shall meet material certification requirements.
- Anchor bolt size and spacing shall be as required by the Pedestrian Truss Superstructure fabricator. The cost of furnishing and placing anchor bolts shall be considered included in the cost of Concrete Structures.
- Concrete Sealer shall be applied to exposed concrete surfaces.
- E.F. refers to Each Face
- For details of piles and Concrete Encasement, see Sheet 16.

**WEST ABUTMENT  
BICYCLE BRIDGE OVER FOX RIVER**

DESIGNED	-	DLS
CHECKED	-	AEU
DRAWN	-	AWH
CHECKED	-	DLS

**PLAN - PILE CAP**

**WILLS BURKE KELSEY ASSOCIATES LTD.**  
 116 West Main Street, Suite 201  
 St. Charles, Illinois 60174  
 (630) 443-7755

SHEET NO. 6 24 SHEETS	F.A.U RTE.	SECTION	COUNTY	TOTAL SHEETS	SHEET NO.
		05-F3000-06-BT	KANE	58	27
CONTRACT NO. 63517					
FED. ROAD DIST. NO. ILLINOIS FED. AID PROJECT					

PLOT DATE = 12/28/2018  
 FILE NAME = F:\CIBEL WEST Projects\3089\123448\_FoxRvTr-PH11\Structural\Upn\Final\Plan\BikeBridge-06B-WBurst.dgn