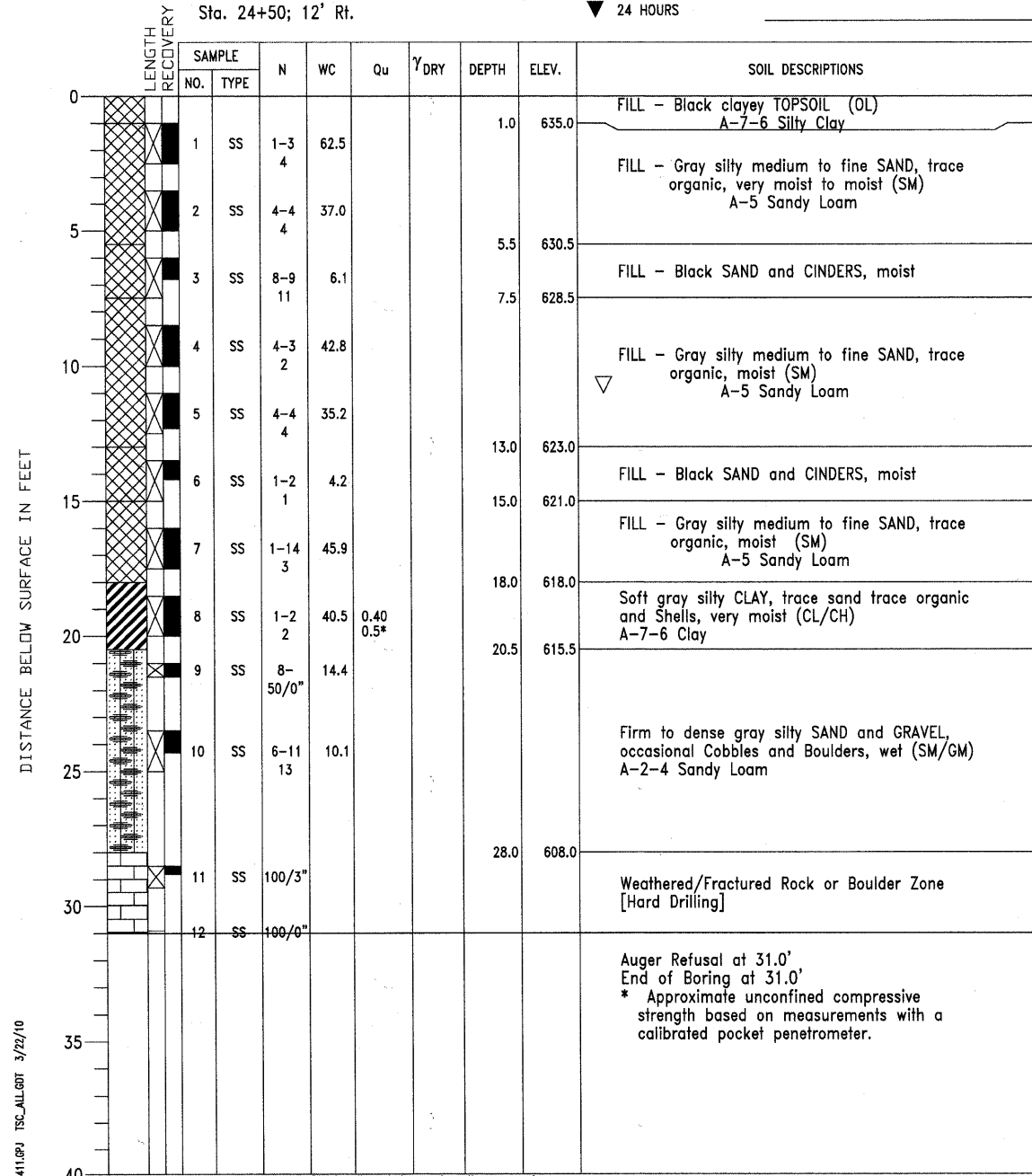


PROJECT Fox River Trail, Hurd's Island, Aurora, IL  
 CLIENT Wills Burke Kelsey Associates, Ltd., St. Charles, IL  
 BORING 101 DATE STARTED 1-29-10 DATE COMPLETED 1-29-10 JOB L-74,411



ELEVATIONS  
 GROUND SURFACE 636.0  
 END OF BORING 605.0  
 Sta. 24+50; 12' Rt.

WATER LEVEL OBSERVATIONS  
 WHILE DRILLING 1.0'  
 AT END OF BORING 11.0'  
 24 HOURS



DRILL RIG NO. 314

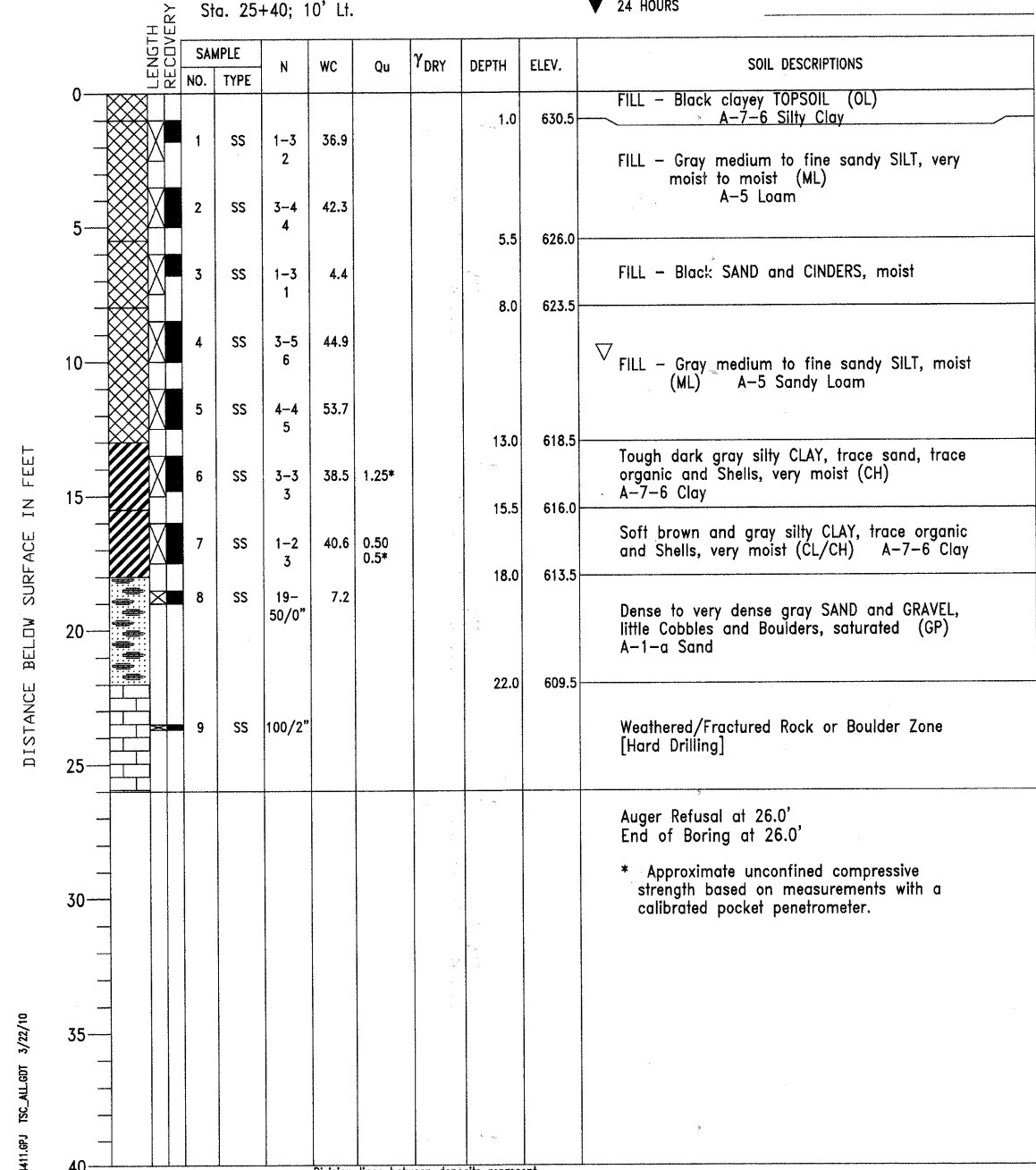
Division lines between deposits represent approximate boundaries between soil types; in-situ, the transition may be gradual.

PROJECT Fox River Trail, Hurd's Island, Aurora, IL  
 CLIENT Wills Burke Kelsey Associates, Ltd., St. Charles, IL  
 BORING 102 DATE STARTED 1-29-10 DATE COMPLETED 1-29-10 JOB L-74,411



ELEVATIONS  
 GROUND SURFACE 631.5  
 END OF BORING 605.5  
 Sta. 25+40; 10' Lt.

WATER LEVEL OBSERVATIONS  
 WHILE DRILLING 15.0'  
 AT END OF BORING 10.0'  
 24 HOURS



DRILL RIG NO. 314

Division lines between deposits represent approximate boundaries between soil types; in-situ, the transition may be gradual.

|            |     |
|------------|-----|
| DESIGNED - | DLS |
| CHECKED -  | AEU |
| DRAWN -    | AWH |
| CHECKED -  | DLS |

SOIL BORING LOGS V  
 BICYCLE BRIDGE OVER FOX RIVER

|   |              |            |                     |          |                  |           |
|---|--------------|------------|---------------------|----------|------------------|-----------|
| <b>WILLS BURKE KELSEY ASSOCIATES LTD.</b><br>116 West Main Street, Suite 201<br>St. Charles, Illinois 60174<br>(630) 443-7755 | SHEET NO. 23 | F.A.U RTE. | SECTION             | COUNTY   | TOTAL SHEETS     | SHEET NO. |
|   | 24 SHEETS    |            | 05-F3000-06-BT      | KANE     | 58               | 44        |
|   |              |            | CONTRACT NO. 63517  |          |                  |           |
|   |              |            | FED. ROAD DIST. NO. | ILLINOIS | FED. AID PROJECT |           |

PLOT DATE = 12/28/2010  
 FILE NAME = P:\CIBBEL WEST Projects\2009\123148 FoxRvTr-Phil\Structural\OpenV\Final\_Plans\BikeBridg-23-SoilBoring.dgn