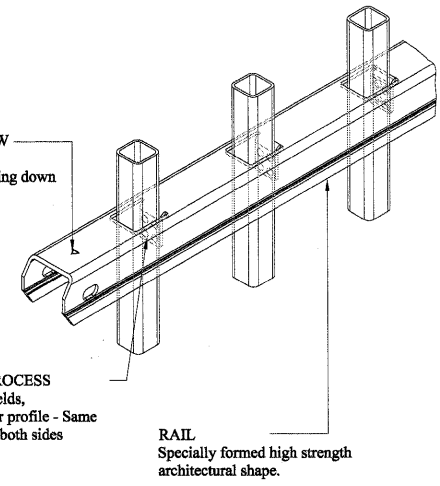
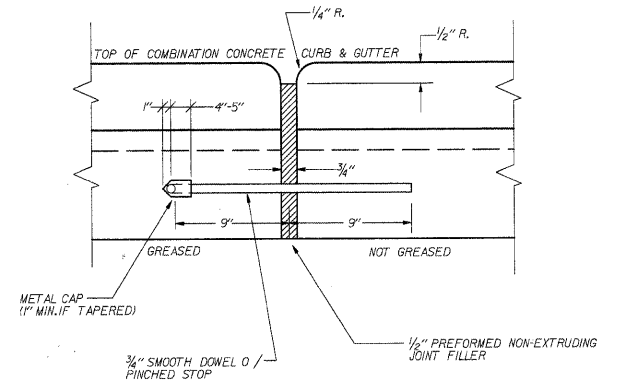


RAKING DIRECTIONAL ARROW
Welded panel can be raked 30° over 8' with arrow pointing down grade.

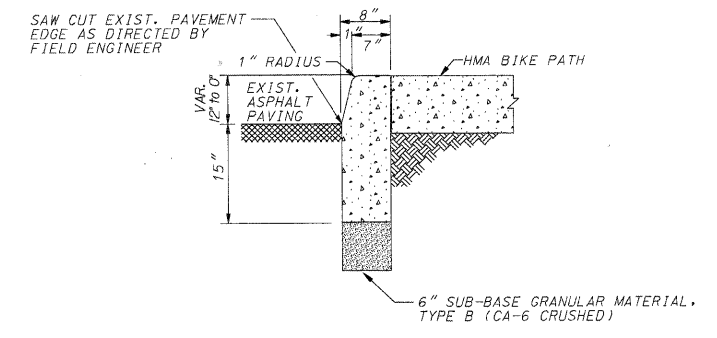
WELDING PROCESS
No exposed welds,
Good Neighbor profile - Same appearance on both sides



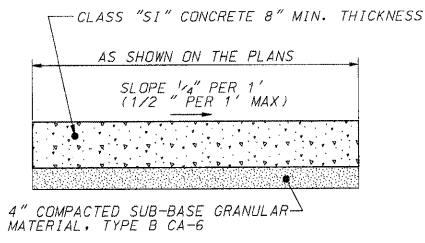
FENCE (SPECIAL) DETAIL



EXPANSION JOINT DETAIL

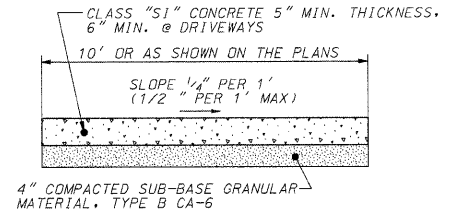


CONCRETE CURB, TYPE B (SPECIAL) DETAIL



- NOTES:
1. MAX. LONGITUDINAL SLOPE SHALL NOT EXCEED 8% (12:1).
 2. SUB-BASE GRANULAR MATERIAL SHALL BE MECHANICALLY COMPACTED.
 3. ALL DRIVEWAY PAVEMENT SHALL BE PROMPTLY BACKFILLED AND PROTECTED FROM DAMAGE.

DRIVEWAY PAVEMENT, 8\"/>



- NOTES:
1. MAX. LONGITUDINAL SLOPE SHALL NOT EXCEED 8% (12:1).
 2. SUB-BASE GRANULAR MATERIAL SHALL BE MECHANICALLY COMPACTED.
 3. ALL SIDEWALK SHALL BE PROMPTLY BACKFILLED AND PROTECTED FROM DAMAGE.

P.C.C. SIDEWALK, 5\"/>

FILE NAME = P:\CBBEL WEST Projects\2009\23149 FoxRivTr-PH1\G:\1\09n\sh\AD1\01.dgn

WILLS BURKE KELSEY ASSOCIATES LTD.
116 West Main Street, Suite 201
St. Charles, Illinois 60174
(630) 443-7755

USER NAME = sUSERs	DESIGNED - PV	REVISED - 10/5/10
PLOT SCALE = N/A	DRAWN - NP	REVISED -
PLOT DATE = 12/20/2010	CHECKED - PV	REVISED -
	DATE - 12/20/10	REVISED -

**STATE OF ILLINOIS
DEPARTMENT OF TRANSPORTATION**

GENERAL DETAILS

SCALE: N/A SHEET NO. 44 OF 58 SHEETS STA. TO STA.

F.A. RTE.	SECTION	COUNTY	TOTAL SHEETS	SHEET NO.
	05-F3000-06-BT	KANE	58	47
CONTRACT NO. 63517				
FED. ROAD DIST. NO.		ILLINOIS FED. AID PROJECT		