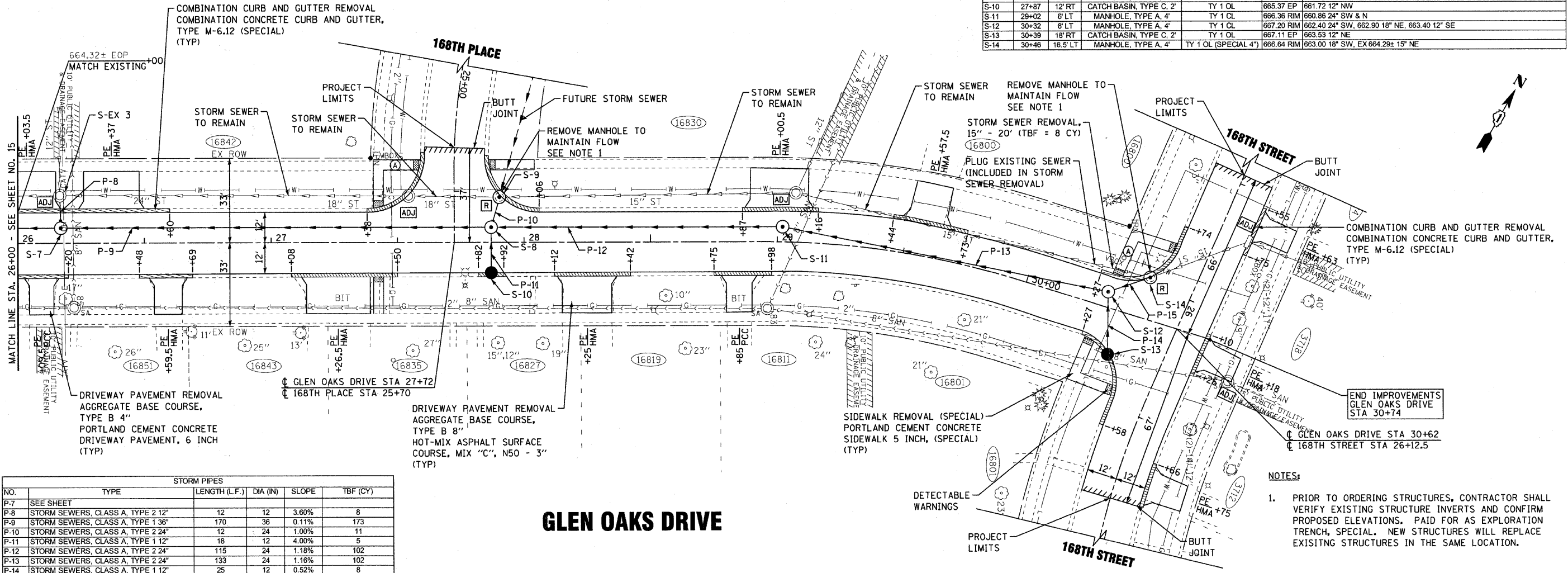
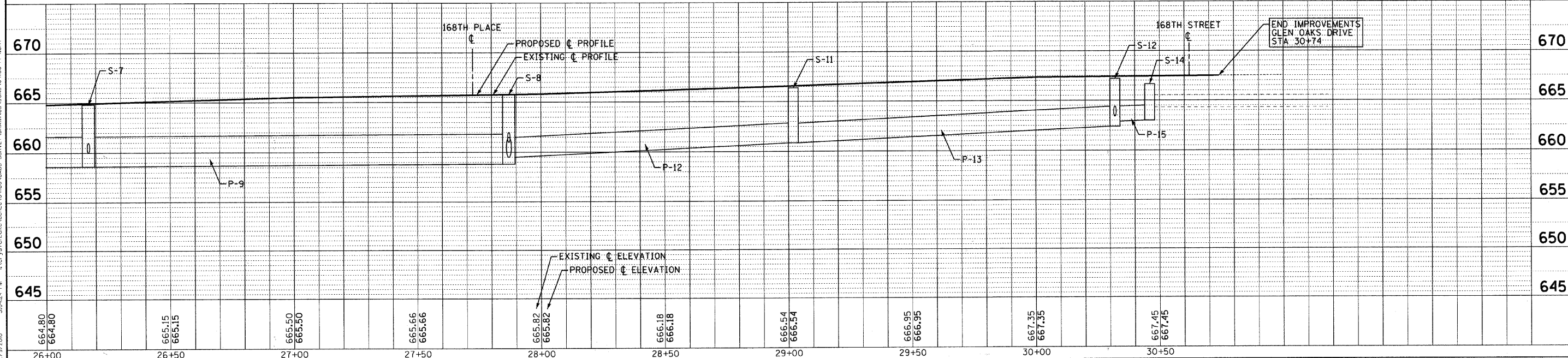


NO.	STATION	OFFSET	TYPE	FRAME	RIM / EP	INVERT
S-7	26+17	6' LT	MANHOLE, TYPE A, 5'	TY 1 CL	664.80 RIM	658.63 36" NE & SW, 660.00 12" NW
S-EX3	26+17	18.5' LT	EXISTING MANHOLE	EXISTING CL	664.94 RIM	660.44 12" SE, EX 660.44± 24" SW, EX 660.54± 24" NE, EX 660.59± 12" NW
S-8	27+87	6' LT	MANHOLE, TYPE A, 5'	TY 1 CL	665.63 RIM	658.82 36" SW, 659.50 24" N & NE, 661.00 12" SE
S-9	27+90	18.5' LT	MANHOLE, TYPE A, 5'	TY 1 OL	665.03 RIM	659.62 24" S, EX 661.83± 15" NE, EX 661.73± 18" SW, FUTURE 659.62± 24" N
S-10	27+87	12' RT	CATCH BASIN, TYPE C, 2'	TY 1 OL	665.37 EP	661.72 12" NW
S-11	29+02	6' LT	MANHOLE, TYPE A, 4'	TY 1 CL	666.36 RIM	660.86 24" SW & N
S-12	30+32	6' LT	MANHOLE, TYPE A, 4'	TY 1 CL	667.20 RIM	662.40 24" SW, 662.90 18" NE, 663.40 12" SE
S-13	30+39	10' RT	CATCH BASIN, TYPE C, 2'	TY 1 OL	667.11 EP	663.53 12" NE
S-14	30+46	16.5' LT	MANHOLE, TYPE A, 4'	TY 1 OL (SPECIAL 4')	666.64 RIM	663.00 18" SW, EX 664.29± 15" NE



STORM PIPES					
NO.	TYPE	LENGTH (L.F.)	DIA (IN)	SLOPE	TBF (CY)
P-7	SEE SHEET				
P-8	STORM SEWERS, CLASS A, TYPE 1 12"	12	12	3.60%	8
P-9	STORM SEWERS, CLASS A, TYPE 1 36"	170	36	0.11%	173
P-10	STORM SEWERS, CLASS A, TYPE 2 24"	12	24	1.00%	11
P-11	STORM SEWERS, CLASS A, TYPE 1 12"	18	12	4.00%	5
P-12	STORM SEWERS, CLASS A, TYPE 2 24"	115	24	1.18%	102
P-13	STORM SEWERS, CLASS A, TYPE 2 24"	133	24	1.16%	102
P-14	STORM SEWERS, CLASS A, TYPE 1 12"	25	12	0.52%	8
P-15	STORM SEWERS, CLASS A, TYPE 1 18"	18	18	0.56%	7

### GLEN OAKS DRIVE



- NOTES:**
- PRIOR TO ORDERING STRUCTURES, CONTRACTOR SHALL VERIFY EXISTING STRUCTURE INVERTS AND CONFIRM PROPOSED ELEVATIONS. PAID FOR AS EXPLORATION TRENCH, SPECIAL. NEW STRUCTURES WILL REPLACE EXISTING STRUCTURES IN THE SAME LOCATION.

CONTRACT NO. 04-00027-03-PV  
 COUNTY COOK  
 TOTAL SHEETS 36  
 SHEET NO. 16  
 C-91-004-05  
 CONTRACT NO. 63539  
 FEDERAL AID PROJECT HPD-097(009)

DESIGNED - MWP	REVISED - 12-01-10 IDOT REVIEW
DRAWN - KAR	REVISED -
CHECKED - RWL	REVISED -
DATE - 10-01-10	FILE - 041180-PP4.sh+

**CITY OF COUNTRY CLUB HILLS, ILLINOIS  
GLEN OAKS DRIVE INFRASTRUCTURE IMPROVEMENTS**

**PLAN AND PROFILE  
GLEN OAKS DRIVE**

SCALE: H: 1"=20' V: 1"=5'  
STA. 26+00 TO STA. 30+62

F.A. RTE.	SECTION	COUNTY	TOTAL SHEETS	SHEET NO.
-	04-00027-03-PV	COOK	36	16
C-91-004-05		CONTRACT NO. 63539		
FED. ROAD DIST. NO. (ILLINOIS) FED. AID PROJECT HPD-097(009)				