

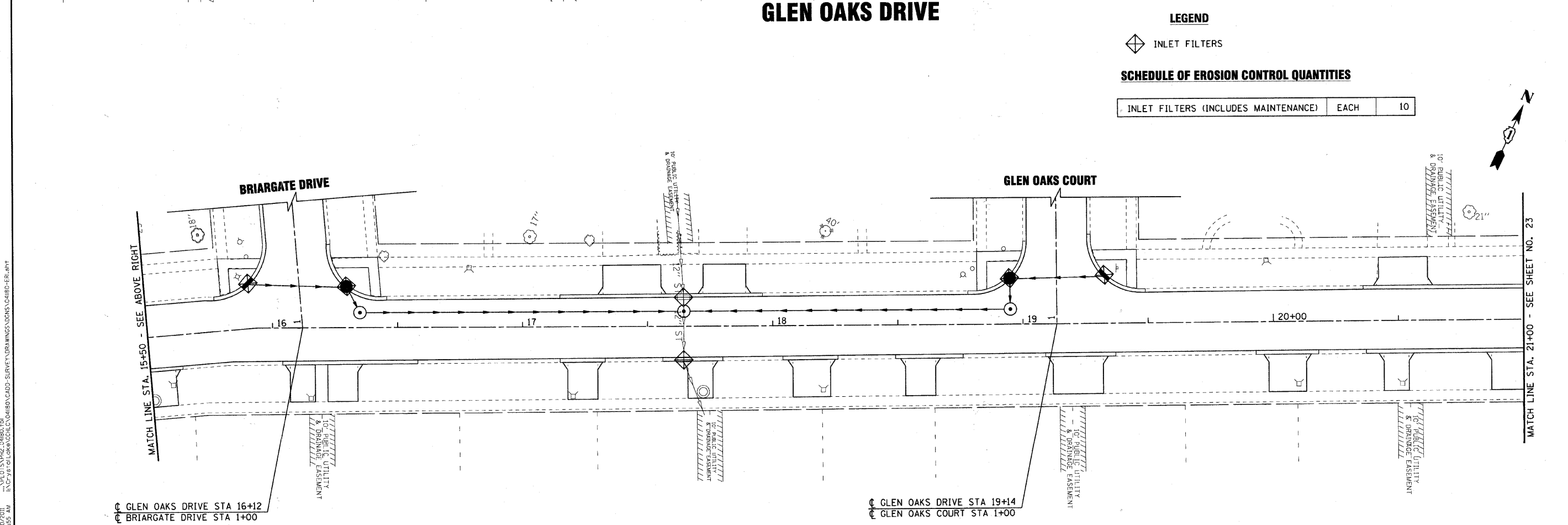
**GLEN OAKS DRIVE**

**LEGEND**

◆ INLET FILTERS

**SCHEDULE OF EROSION CONTROL QUANTITIES**

INLET FILTERS (INCLUDES MAINTENANCE)	EACH	10
--------------------------------------	------	----



**GLEN OAKS DRIVE**

COPYRIGHT © 2010 BY BAXTER & WOODMAN, INC.  
 STATE OF ILLINOIS - PROFESSIONAL DESIGN FIRM  
 LICENSE NO. - 284-00127 - EXPIRES 4/30/2011  
 1100 W. 120th St., Suite 200, Oak Brook, IL 60155  
 (630) 581-1200



DESIGNED - MWP	REVISED - 12-01-10 IDOT REVIEW
DRAWN - CJC	REVISED -
CHECKED - RWL	REVISED -
DATE - 10-01-10	FILE - 041180-ER1.shp

**CITY OF COUNTRY CLUB HILLS, ILLINOIS  
GLEN OAKS DRIVE INFRASTRUCTURE IMPROVEMENTS**

**EROSION & SEDIMENT CONTROL PLAN  
GLEN OAKS DRIVE**

SCALE: 1" = 20'  
STA. 9+40 TO STA. 21+00

F.A. RTE.	SECTION	COUNTY	TOTAL SHEETS	SHEET NO.
-	04-00027-03-PV	COOK	36	22
C-91-004-05		CONTRACT NO. 63539		
FED. ROAD DIST. NO. [ILLINOIS] FED. AID PROJECT HPD-897(008)				