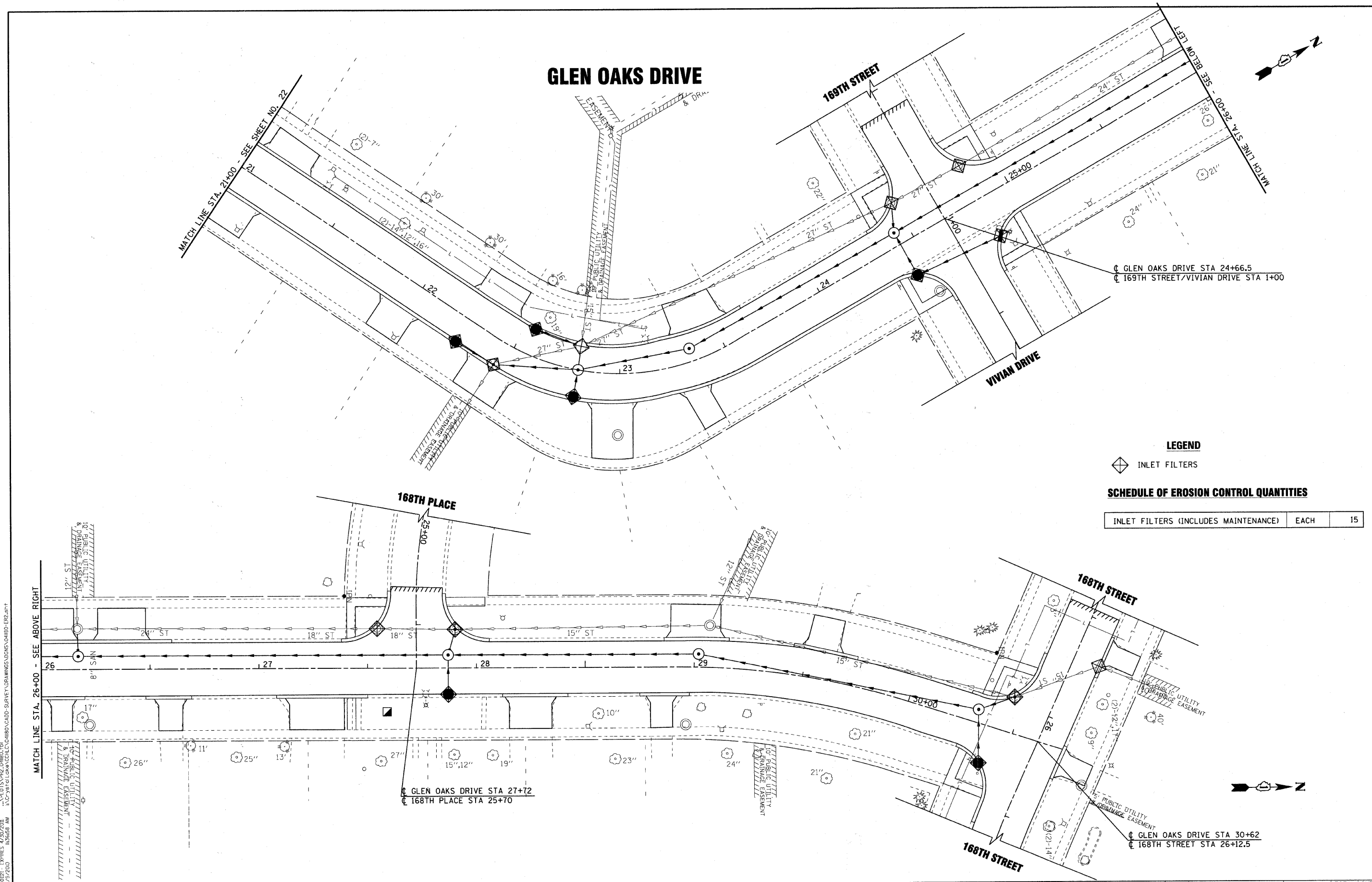


GLEN OAKS DRIVE



GLEN OAKS DRIVE STA 24+66.5
 169TH STREET/VIVIAN DRIVE STA 1+00

LEGEND

◆ INLET FILTERS

SCHEDULE OF EROSION CONTROL QUANTITIES

INLET FILTERS (INCLUDES MAINTENANCE)	EACH	15
--------------------------------------	------	----

DESIGNED BY BAXTER & WOODMAN, INC.
 STATE OF ILLINOIS - PROFESSIONAL DESIGN FIRM
 LICENSE NO. 04-00027-03-PV EXPIRES 12/31/2011
 12/25/2010 10:56:56 AM

DESIGNED - MWP	REVISED - 12-01-10 IDOT REVIEW
DRAWN - CJC	REVISED -
CHECKED - RWL	REVISED -
DATE - 10-01-10	FILE - 041180-ER2.sht

CITY OF COUNTRY CLUB HILLS, ILLINOIS
GLEN OAKS DRIVE INFRASTRUCTURE IMPROVEMENTS

EROSION & SEDIMENT CONTROL PLAN
GLEN OAKS DRIVE

SCALE: 1" = 20' STA. 21+00 TO STA. 30+74

F.A. RTE.	SECTION	COUNTY	TOTAL SHEETS	SHEET NO.
-	04-00027-03-PV	COOK	36	23
C-91-004-05		CONTRACT NO. 63539		
FED. ROAD DIST. NO.		ILLINOIS FED. AID PROJECT HPD-897(008)		