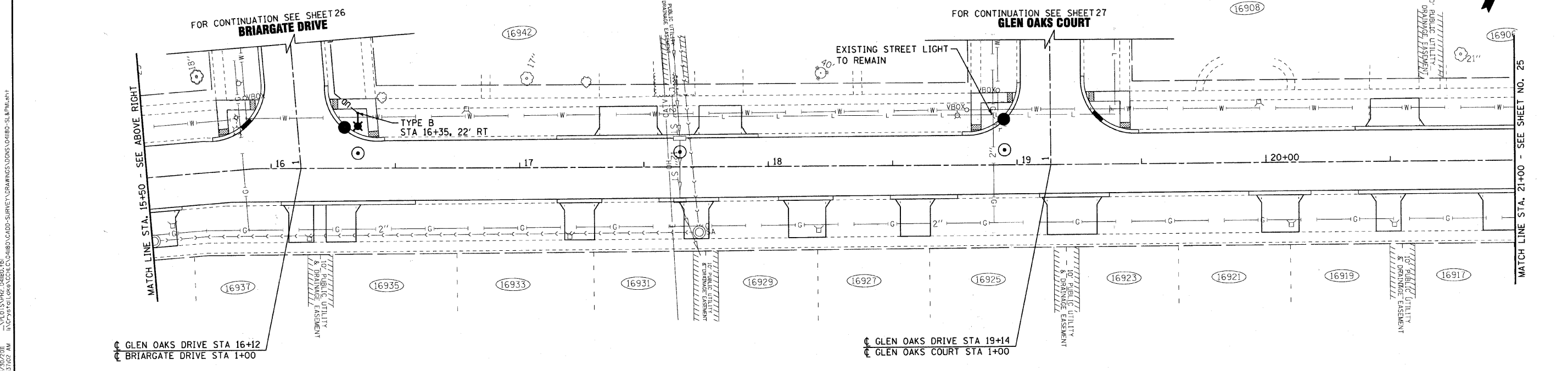


GLEN OAKS DRIVE

LEGEND	
□	EXISTING COM ED POWER POLE
■	POWER PEDESTAL
◻	LIGHTING HANDHOLE
—	EXISTING UNDERGROUND CONDUIT
—OH	EXISTING OVERHEAD POWER LINE
—UD	3/4" UNIT DUCT W/2"8 & 1"8 GROUND
PC	2" CONDUIT, PUSHED 8' LONG WITH 3/4" UNIT DUCT, OR AS NOTED
U	2" CONDUIT, TRENCHED 8' LONG WITH 3"2, OR AS NOTED
—	PROPOSED STREET LIGHT
☼	EXISTING STREET LIGHT - TYPE A; 8' ARM, 250W HPS, 240V
☼	EXISTING STREET LIGHT - TYPE B; 12' ARM, 250W HPS, 240V



GLEN OAKS DRIVE

COPYRIGHT © 2010 BY BAXTER & WOODMAN, INC.
 STATE OF ILLINOIS PROFESSIONAL DESIGN FIRM
 LICENSE NO. 184-00023 - EXPIRES 6/30/2011
 12/29/2010



DESIGNED - MWP /MWH	REVISED - 12-01-10 IDOT REVIEW
DRAWN - KAR	REVISED -
CHECKED - RWL /MDK	REVISED -
DATE - 10-01-10	FILE - 041180-SI&PMI.sht

**CITY OF COUNTRY CLUB HILLS, ILLINOIS
GLEN OAKS DRIVE INFRASTRUCTURE IMPROVEMENTS**

STREET LIGHTING AND PAVEMENT MARKING PLAN GLEN OAKS DRIVE	
SCALE: 1" = 20'	STA. 9+40 TO STA. 21+00

F.A. RTE.	SECTION	COUNTY	TOTAL SHEETS	SHEET NO.
-	04-00027-03-PV	COOK	36	24
C-91-004-05	CONTRACT NO. 63539			
FED. ROAD DIST. NO. ILLINOIS FED. AID PROJECT HPD-097(008)				