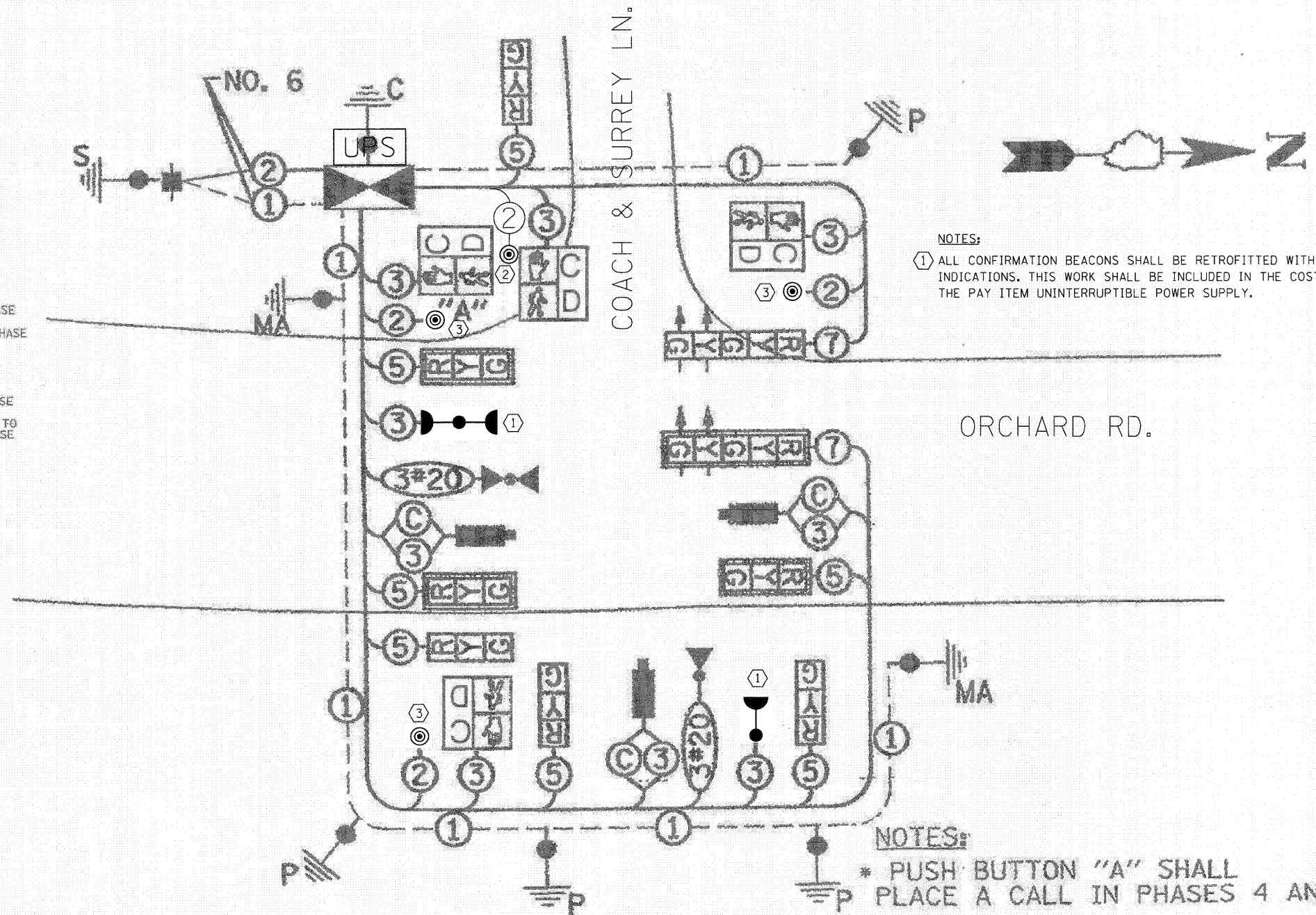


PAY ITEM	UNIT	QUANTITY
MAINTENANCE OF EXISTING TRAFFIC SIGNAL INSTALLATION	EACH	1
FULL-ACTUATED CONTROLLER IN EXISTING CABINET	EACH	1
ELECTRIC CABLE IN CONDUIT, SIGNAL NO. 14 2C	FOOT	49
PEDESTRIAN PUSH-BUTTON	EACH	4
MODIFY EXISTING CONTROLLER CABINET	EACH	1
REMOVE EXISTING TRAFFIC SIGNAL EQUIPMENT	EACH	1
SIGNAL HEAD, LED, RETROFIT	EACH	2
FIBER OPTIC PATCH PANEL	EACH	1
TERMINATE FIBER IN CABINET	EACH	8
UNINTERRUPTIBLE POWER SUPPLY (SPECIAL KDOT)	EACH	1
QUAD ENCODER	EACH	1
MANAGED ETHERNET SWITCH, TYPE 1	EACH	1
MALFUNCTION MANAGEMENT UNIT	EACH	1

THE TRAFFIC SIGNAL CONTROL EQUIPMENT FOR THIS PROJECT SHALL BE SIEMENS EAGLE COMPATIBLE IN COMPLIANCE WITH THE COUNTY'S EXISTING ATMS

- CONSTRUCTION NOTES:
- ALL CONFIRMATION BEACONS SHALL BE RETROFITTED WITH L.E.D. INDICATIONS. THIS WORK SHALL BE PAID FOR PER EACH BY SIGNAL HEAD, LED, RETROFIT.
 - CONTRACTOR TO INSTALL NEW PEDESTRIAN PUSH-BUTTON
 - CONTRACTOR TO REMOVE EXISTING PEDESTRIAN PUSH-BUTTON AND INSTALL NEW PEDESTRIAN PUSH-BUTTON WITH PEDESTRIAN PUSH-BUTTON SIGNS. USE EXISTING ELECTRIC CABLE.

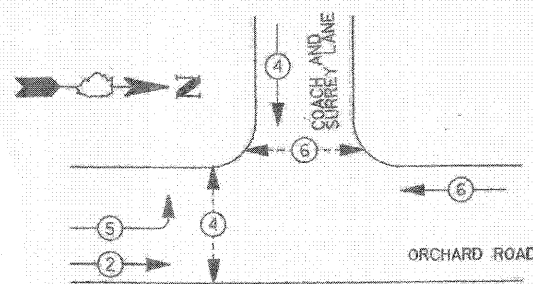
PROPOSED CABLE PLAN



- NOTES:
- ALL CONFIRMATION BEACONS SHALL BE RETROFITTED WITH L.E.D. INDICATIONS. THIS WORK SHALL BE INCLUDED IN THE COST FOR THE PAY ITEM UNINTERRUPTIBLE POWER SUPPLY.

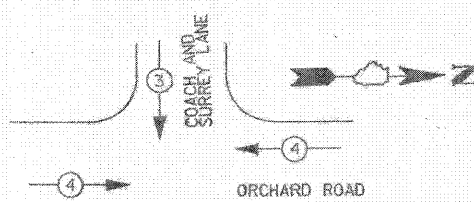
- NOTES:
- * PUSH BUTTON "A" SHALL PLACE A CALL IN PHASES 4 AND 6.

PROPOSED CONTROLLER SEQUENCE



- LEGEND
- DUAL ENTRY PHASE
 - SINGLE ENTRY PHASE
 - OVERLAP
 - PEDESTRIAN PHASE
 - NUMBER REFERS TO ASSOCIATED PHASE

PROPOSED EMERGENCY VEHICLE SEQUENCE



PROPOSED EMERGENCY VEHICLE PREEMPTORS		
EMERGENCY VEHICLE PRE EMPTORS	3	4
MOVEMENT	↓	→