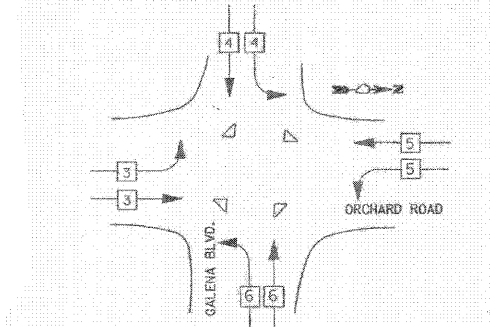


PAY ITEM	UNIT	QUANTITY
MAINTENANCE OF EXISTING TRAFFIC SIGNAL INSTALLATION	EACH	1
FULL-ACTUATED CONTROLLER IN EXISTING CABINET	EACH	1
ELECTRIC CABLE IN CONDUIT, SIGNAL NO. 14 2C	FOOT	170
PEDESTRIAN PUSH-BUTTON	EACH	7
MODIFY EXISTING CONTROLLER CABINET	EACH	1
REMOVE EXISTING TRAFFIC SIGNAL EQUIPMENT	EACH	1
SIGNAL HEAD, LED, RETROFIT	EACH	4
FIBER OPTIC PATCH PANEL	EACH	1
TERMINATE FIBER IN CABINET	EACH	12
INTERSECTION VIDEO TRAFFIC MONITORING SYSTEM WITH PTZ CAMERA	EACH	1
UNINTERRUPTIBLE POWER SUPPLY (SPECIAL KDOT)	EACH	1
QUAD ENCODER	EACH	1
OUTDOOR RATED NETWORK CABLE	FOOT	238
MANAGED ETHERNET SWITCH, TYPE 1	EACH	1
MAJFUNCTION MANAGEMENT UNIT	EACH	1

THE TRAFFIC SIGNAL CONTROL EQUIPMENT FOR THIS PROJECT SHALL BE SIEMENS EAGLE COMPATIBLE IN COMPLIANCE WITH THE COUNTY'S EXISTING ATMS

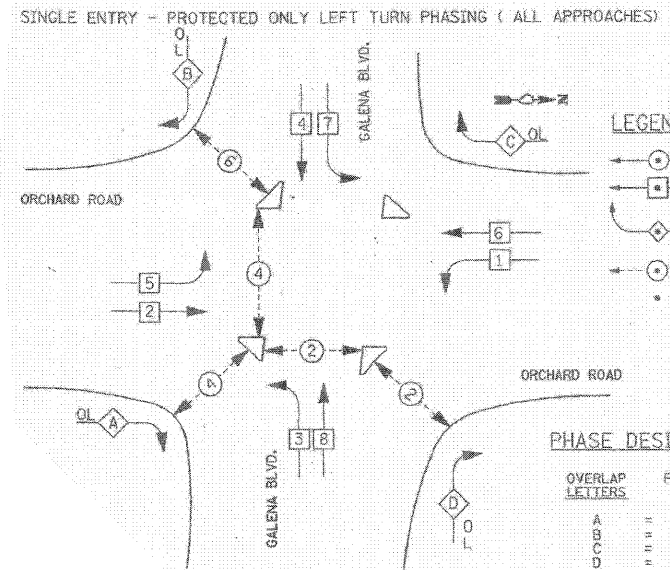
PROPOSED EMERGENCY VEHICLE SEQUENCE



	PROPOSED EMERGENCY VEHICLE PREEMPTORS			
EMERGENCY VEHICLE	3	4	5	6
PREEMPTORS	→	↓	←	→
MOVEMENT	→	↓	←	→

NOTES:
 *PUSH BUTTON "A" SHALL PLACE A CALL IN PHASE 2 AND 4
 *PUSH BUTTON "B" SHALL PLACE A CALL IN PHASE 4 AND 6
 *PUSH BUTTON "C" SHALL PLACE A CALL IN PHASE 2

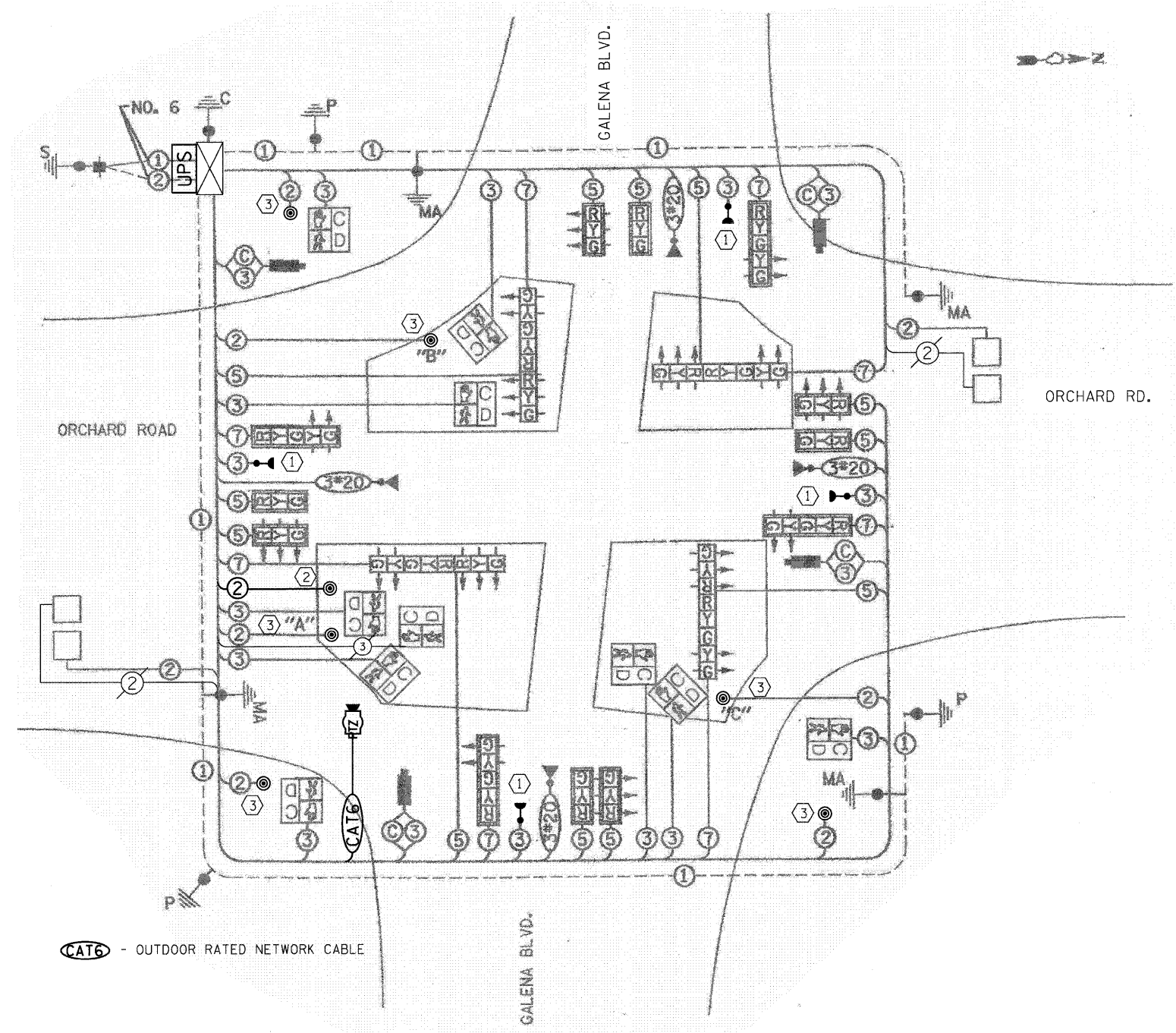
PROPOSED CONTROLLER SEQUENCE



LEGEND
 ○ DUAL ENTRY PHASE
 □ SINGLE ENTRY PHASE
 ◇ OVERLAP
 ○ PEDESTRIAN PHASE
 . NUMBER REFERS TO ASSOCIATED PHASE

PHASE DESIGNATION DIAGRAM

OVERLAP LETTERS	PERMISSIVE PHASE	PROTECTED PHASE
A	2	+
B	4	+
C	6	+
D	8	+



CAT6 - OUTDOOR RATED NETWORK CABLE

- CONSTRUCTION NOTES:
- ALL CONFIRMATION BEACONS SHALL BE RETROFITTED WITH L.E.D. INDICATIONS. THIS WORK SHALL BE PAID FOR PER EACH BY SIGNAL HEAD, LED, RETROFIT.
 - CONTRACTOR TO INSTALL NEW PEDESTRIAN PUSH-BUTTON
 - CONTRACTOR TO REMOVE EXISTING PEDESTRIAN PUSH-BUTTON AND INSTALL NEW PEDESTRIAN PUSH-BUTTON WITH PEDESTRIAN PUSH-BUTTON SIGNS. USE EXISTING ELECTRIC CABLE.