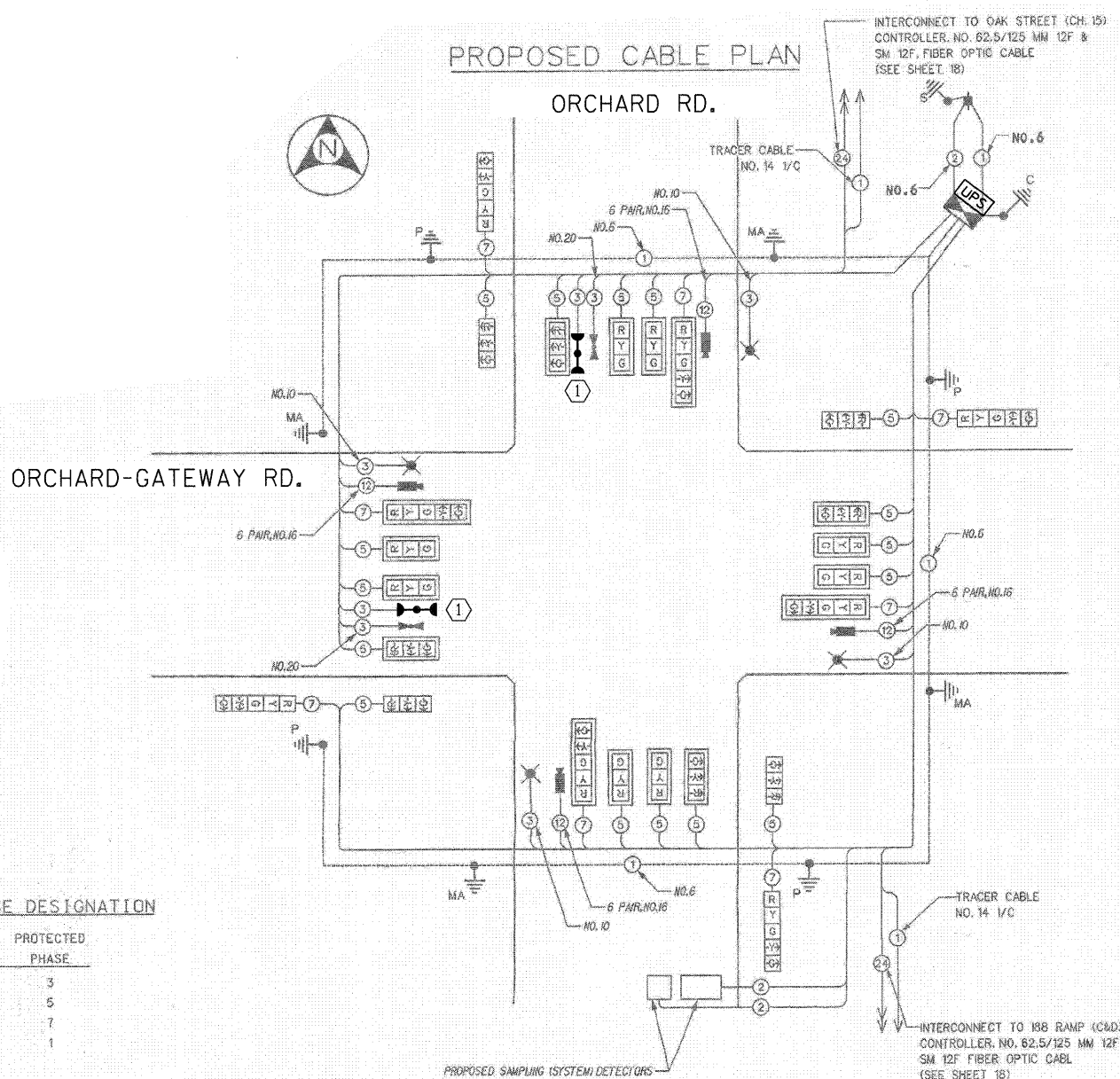


PAY ITEM	UNIT	QUANTITY
MAINTENANCE OF EXISTING TRAFFIC SIGNAL INSTALLATION	EACH	1
FULL-ACTUATED CONTROLLER IN EXISTING CABINET	EACH	1
MODIFY EXISTING CONTROLLER CABINET	EACH	1
REMOVE EXISTING TRAFFIC SIGNAL EQUIPMENT	EACH	1
SIGNAL HEAD, LED, RETROFIT	EACH	2
FIBER OPTIC PATCH PANEL	EACH	1
TERMINATE FIBER IN CABINET	EACH	16
UNINTERRUPTIBLE POWER SUPPLY (SPECIAL KDOT)	EACH	1
QUAD ENCODER	EACH	1
MANAGED ETHERNET SWITCH, TYPE 1	EACH	1
MALFUNCTION MANAGEMENT UNIT	EACH	1

PROPOSED CABLE PLAN



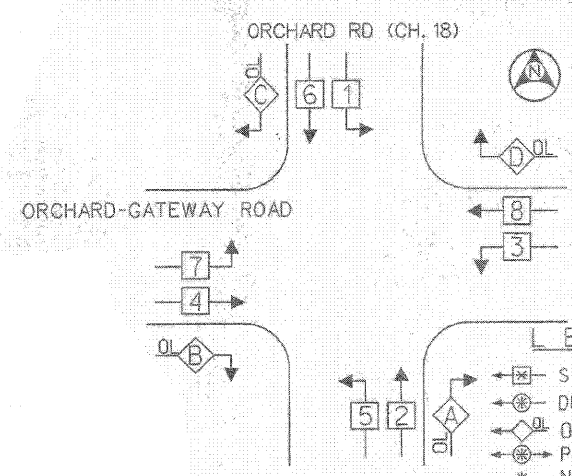
CONSTRUCTION NOTES:
① ALL CONFIRMATION BEACONS SHALL BE RETROFITTED WITH L.E.D. INDICATIONS. THIS WORK SHALL BE PAID FOR PER EACH BY SIGNAL HEAD, LED, RETROFIT.

THE TRAFFIC SIGNAL CONTROL EQUIPMENT FOR THIS PROJECT SHALL BE SIEMENS EAGLE COMPATIBLE IN COMPLIANCE WITH THE COUNTY'S EXISTING ATMS

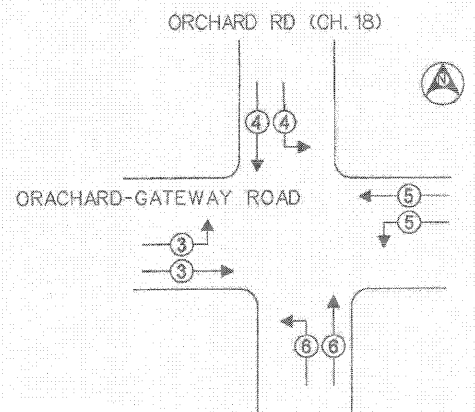
RIGHT TURN OVERLAP PHASE DESIGNATION

OVERLAP LETTER	PERMISSIVE PHASE	PROTECTED PHASE
A	2	3
B	4	5
C	6	7
D	8	1

PROPOSED CONTROLLER SEQUENCE



EMERGENCY VEHICLE PREEMPTION SEQUENCE



LEGEND

- SINGLE ENTRY PHASE
- ⊕ DUAL ENTRY PHASE
- ◇ OVERLAP
- ⊙ PEDESTRIAN PHASE
- * NUMBER REFERS TO ASSOCIATED PHASE.

PHASE DESIGNATION DIAGRAM

EMERGENCY VEHICLE PREEMPTORS				
EMERGENCY VEHICLE PREEMPTOR	3	4	5	6
MOVEMENT	→	↓	←	↑