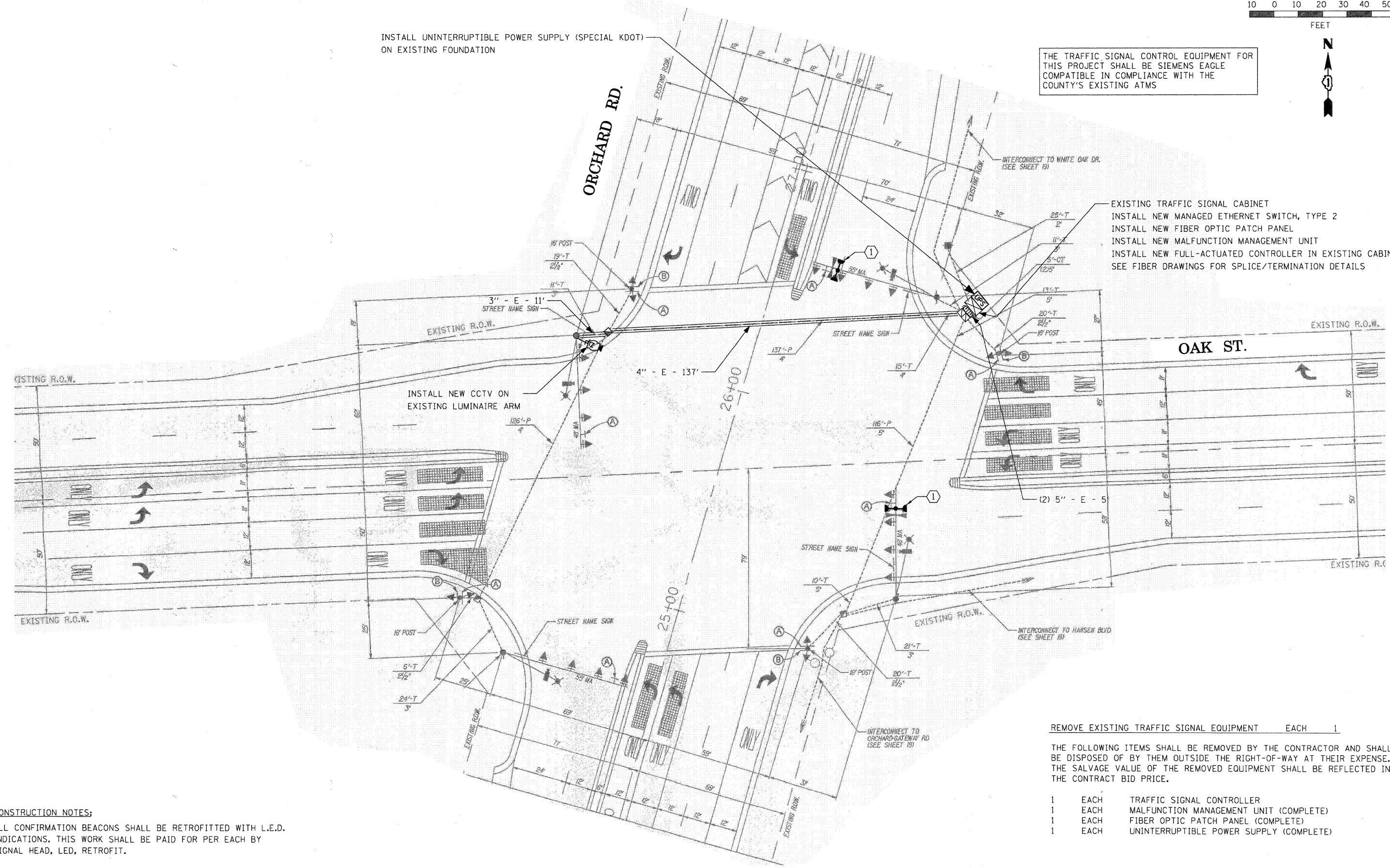


INSTALL UNINTERRUPTIBLE POWER SUPPLY (SPECIAL KDOT)
ON EXISTING FOUNDATION

THE TRAFFIC SIGNAL CONTROL EQUIPMENT FOR
THIS PROJECT SHALL BE SIEMENS EAGLE
COMPATIBLE IN COMPLIANCE WITH THE
COUNTY'S EXISTING ATMS

EXISTING TRAFFIC SIGNAL CABINET
INSTALL NEW MANAGED ETHERNET SWITCH, TYPE 2
INSTALL NEW FIBER OPTIC PATCH PANEL
INSTALL NEW MALFUNCTION MANAGEMENT UNIT
INSTALL NEW FULL-ACTUATED CONTROLLER IN EXISTING CABINET
SEE FIBER DRAWINGS FOR SPLICE/TERMINATION DETAILS



CONSTRUCTION NOTES:
① ALL CONFIRMATION BEACONS SHALL BE RETROFITTED WITH L.E.D. INDICATIONS. THIS WORK SHALL BE PAID FOR PER EACH BY SIGNAL HEAD, LED, RETROFIT.

REMOVE EXISTING TRAFFIC SIGNAL EQUIPMENT EACH 1

THE FOLLOWING ITEMS SHALL BE REMOVED BY THE CONTRACTOR AND SHALL BE DISPOSED OF BY THEM OUTSIDE THE RIGHT-OF-WAY AT THEIR EXPENSE. THE SALVAGE VALUE OF THE REMOVED EQUIPMENT SHALL BE REFLECTED IN THE CONTRACT BID PRICE.

- 1 EACH TRAFFIC SIGNAL CONTROLLER
- 1 EACH MALFUNCTION MANAGEMENT UNIT (COMPLETE)
- 1 EACH FIBER OPTIC PATCH PANEL (COMPLETE)
- 1 EACH UNINTERRUPTIBLE POWER SUPPLY (COMPLETE)

USER NAME = JM	DESIGNED - DG	REVISED -
DRAWN - JM/SM	REVISIED -	
PLOT SCALE = 1" = 20'	CHECKED - DG	REVISED -
PLOT DATE = 12-21-2010	DATE - 12-21-2010	REVISED -